

# New Faculty Orientation



Joanna L. Ho  
September 22, 2021

# The University of California

- It is governed by a **Board of Regents** with authority granted by the Constitution of the State of California.
  - Article IX, Section 9: “The University of California shall constitute a public trust, to be administered by the existing corporation known as “The Regents of the University of California,” with **full powers** of organization and government....”
- “The university shall be **entirely independent of** all political or sectarian influence and kept free therefrom in the appointment of its regents and in the administration of its affairs....”
- The **Officers** of the University and the **Academic Senate**.

## Delegated Authority

- **Admission** and **degrees**.
- **Courses** and **curricula**.
- The **membership** of faculties and councils.
- Selects committees to advise the **Chancellor** concerning the campus **budget** and to advise the **President** concerning the University **budget**.
- Lays before the Board of Regents, through the President, its views on any **matter pertaining to the conduct and welfare** of the University.
- Advises the President and the Chancellors concerning the **administration of the libraries** of the University.
- **Approves the publication of manuscripts** by the University of California Press.

## UC Irvine Academic Senate Councils & Committees

### Councils

- [Council on Academic Personnel \(CAP\)](#)
- [Council on Educational Policy \(CEP\)](#)
- [Council on Enrollment Management and Admissions \(CEMA\)](#)
- [Council on Equity and Inclusion \(CEI\)](#)
- [Council on Faculty Welfare, Diversity, and Academic Freedom \(CFW\)](#)
- [Council on Planning and Budget \(CPB\)](#)
- [Council on Research, Computing, and Libraries \(CORCL\)](#)
- [Council on Teaching, Learning, and Student Experience \(CTLSE\)](#)
- [Graduate Council \(GC\)](#)

### Committees

- [Committee on Committees \(COC\)](#)
- [Committee on Privilege and Tenure \(CPT\)](#)
- [Committee on Rules and Jurisdiction \(CRJ\)](#)
- [Committee on Scholarly Honors and Awards \(SHA\)](#)

## UC Irvine Academic Senate Councils & Committees

### Boards

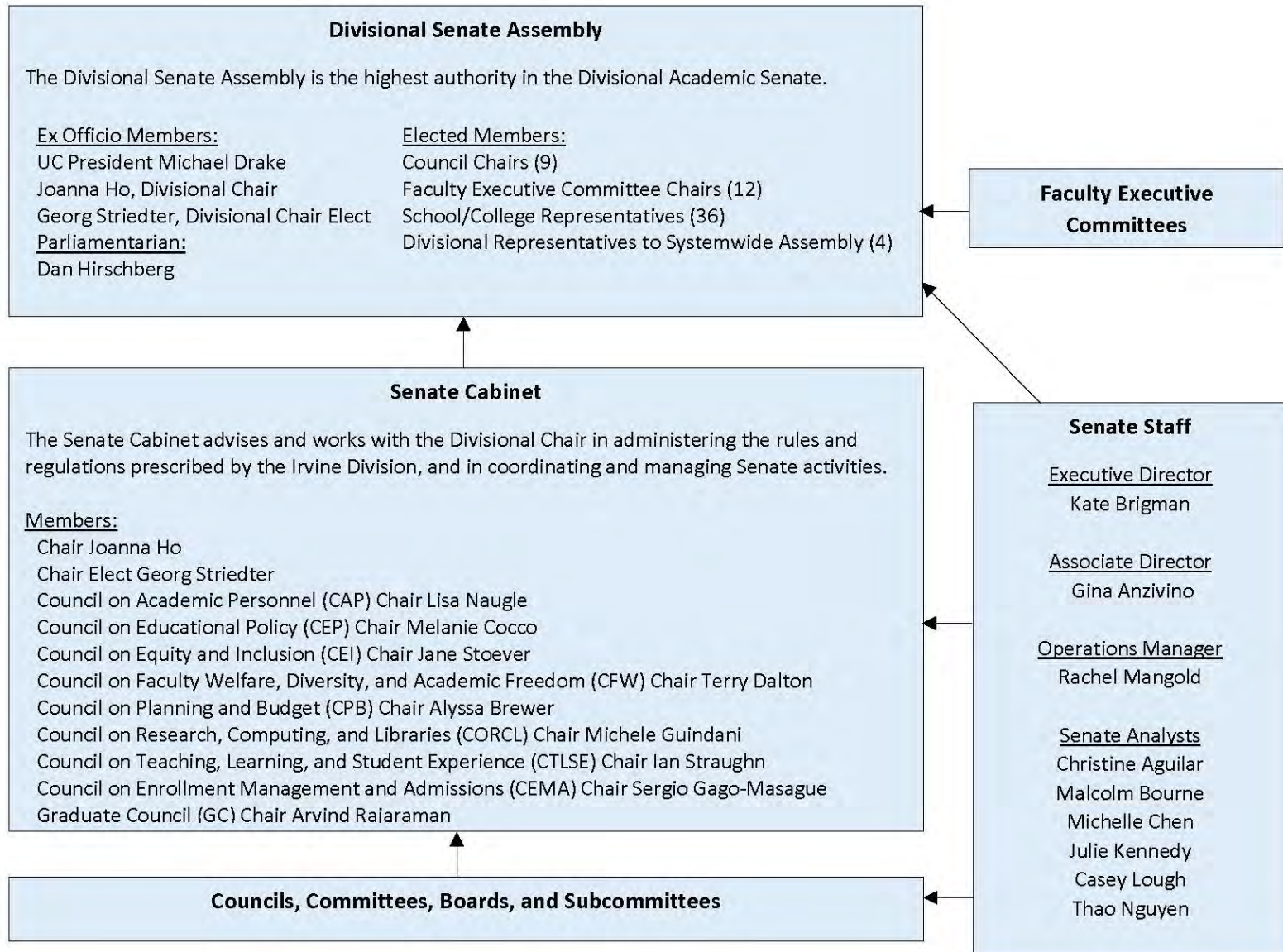
- Academic Integrity Review Board (AIRB) – a subcommittee of CTLSE
- Academic Program Review Board (APRB) – a subcommittee of CEP & GC
- Board on Undergraduate Scholarships, Honors & Financial Aids (BUSHFA) – a subcommittee of CTLSE
- Campuswide Honors Collegium Board (CHCB) – a subcommittee of CTLSE

### Subcommittees

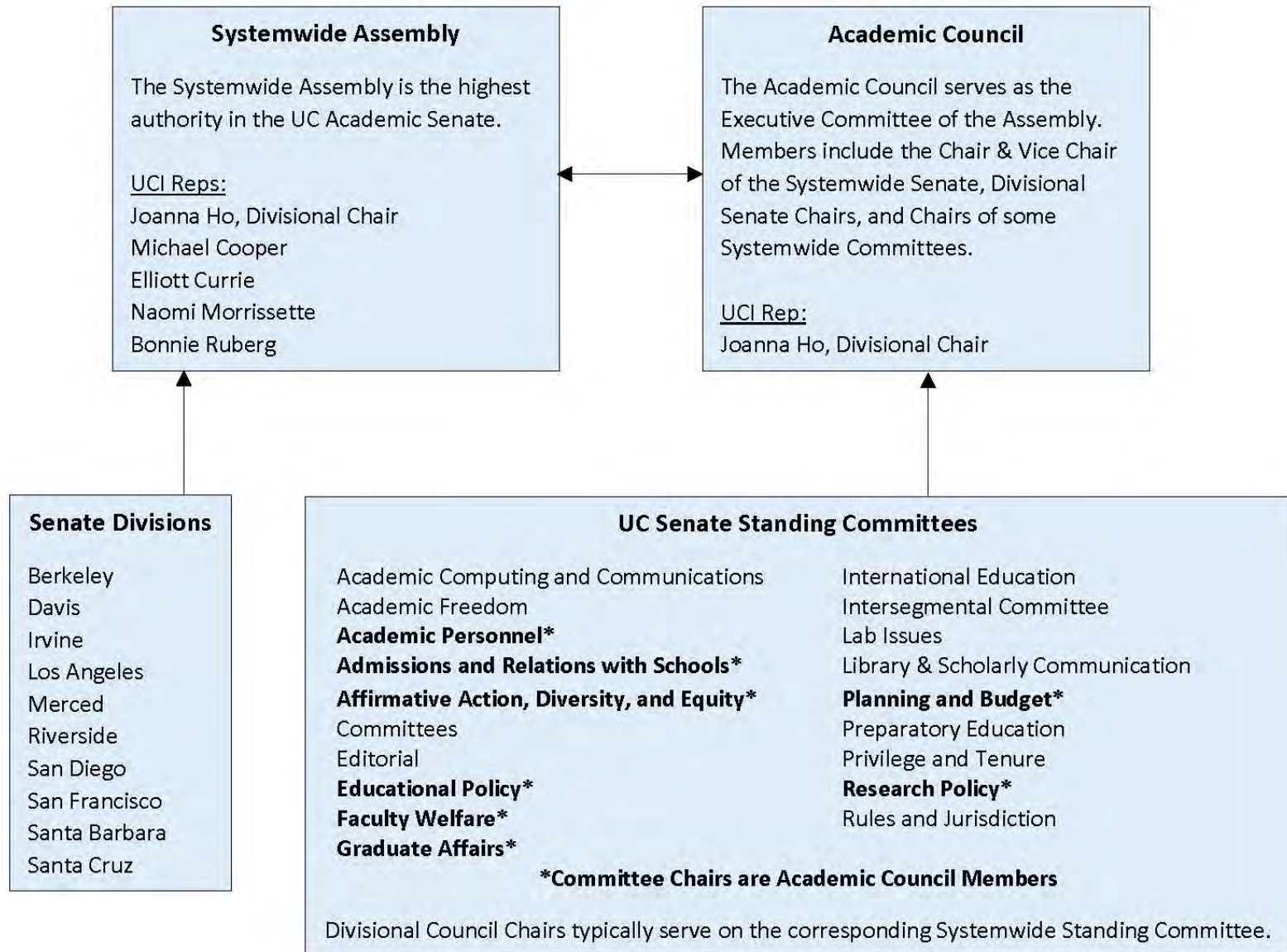
- Subcommittee on Courses & Continuing, Part-Time, & Summer Session Education (SCOC) – a subcommittee of CEP
- Subcommittee on International Education (SCIE) – a subcommittee of CEP & GC
- Policy and Assessment Subcommittee (SCPA) – a subcommittee of CEP
- Subcommittee on Computing (SubComp) – a subcommittee of CORCL

### Special Committees

- Grad Council/CPB Subcommittee on SSGPDP Third Year Review (SSGPDP)



# UCI Systemwide Academic Senate



## Senate contacts

- **Joanna L. Ho**, Chair
- [chair@uci.edu](mailto:chair@uci.edu)
  
- **Kate Brigman**, Executive Director
- [kate.brigman@uci.edu](mailto:kate.brigman@uci.edu)
  
- **Senate Website:** [senate.uci.edu](http://senate.uci.edu)