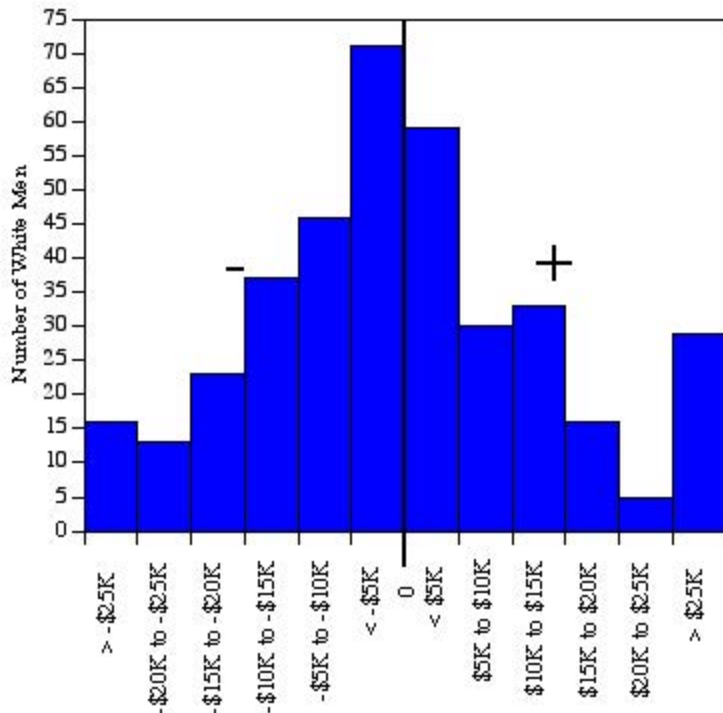


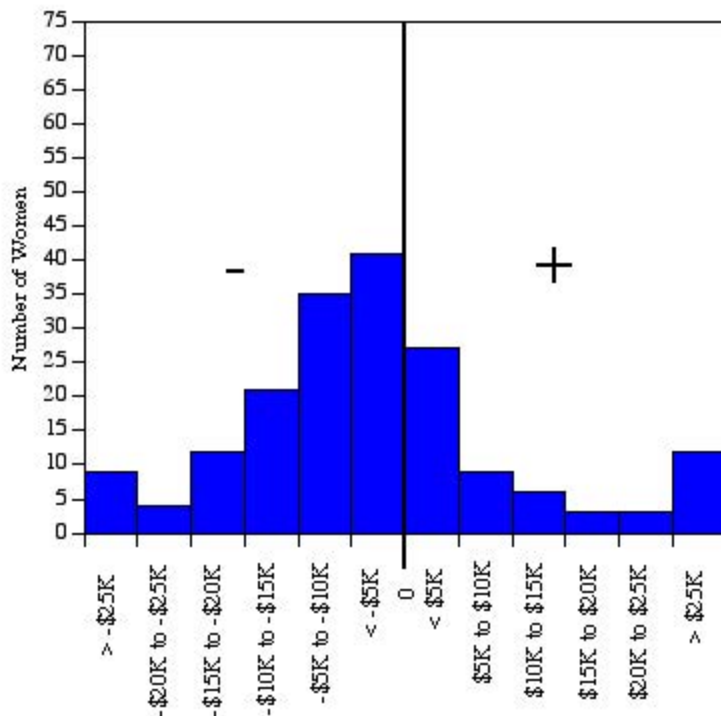
University of California, Irvine
 Ladder Rank Faculty Salary Residuals
General Campus White Men
 October 2001 Revised



Residuals (predicted - actual salary) are calculated separately for each academic unit. Standard error ranges from \$10,039 to \$20,710.

Sources: Payroll/Personnel System Extract as of 10-31-2001, Academic Personnel

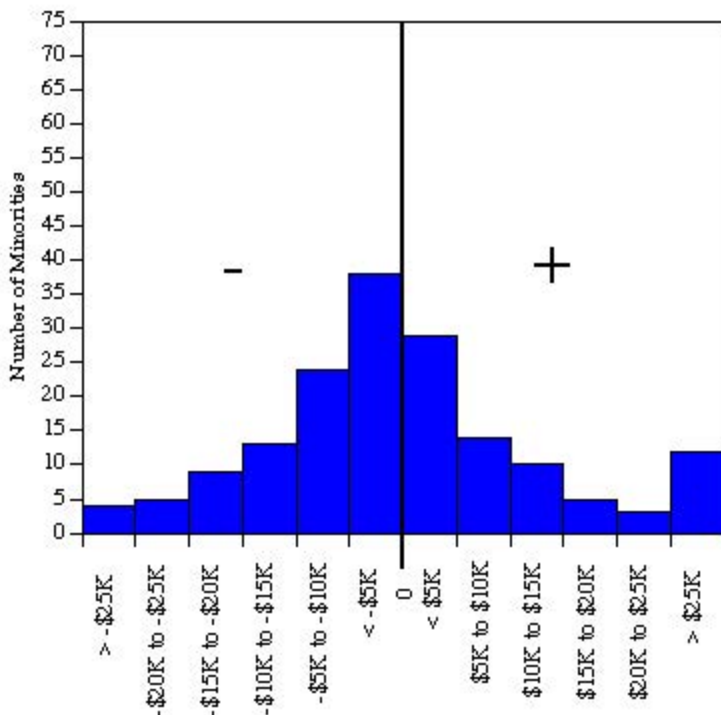
University of California, Irvine
 Ladder Rank Faculty Salary Residuals
General Campus Women
 October 2001 Revised



Residuals (predicted - actual salary) are calculated separately for each academic unit. Standard error ranges from \$10,039 to \$20,710.

Sources: Payroll/Personnel System Extract as of 10-31-2001, Academic Personnel

University of California, Irvine
 Ladder Rank Faculty Salary Residuals
General Campus Minorities
 October 2001 Revised

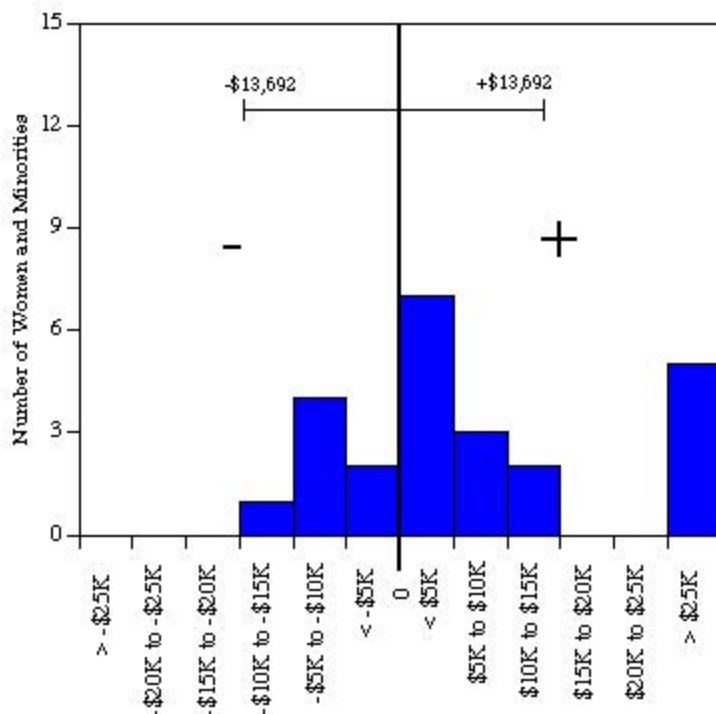


Residuals (predicted - actual salary) are calculated separately for each academic unit. Standard error ranges from \$10,039 to \$20,710.

Sources: Payroll/Personnel System Extract as of 10-31-2001, Academic Personnel

The Claire Trevor School of the Arts: Women and Minorities

October 2001

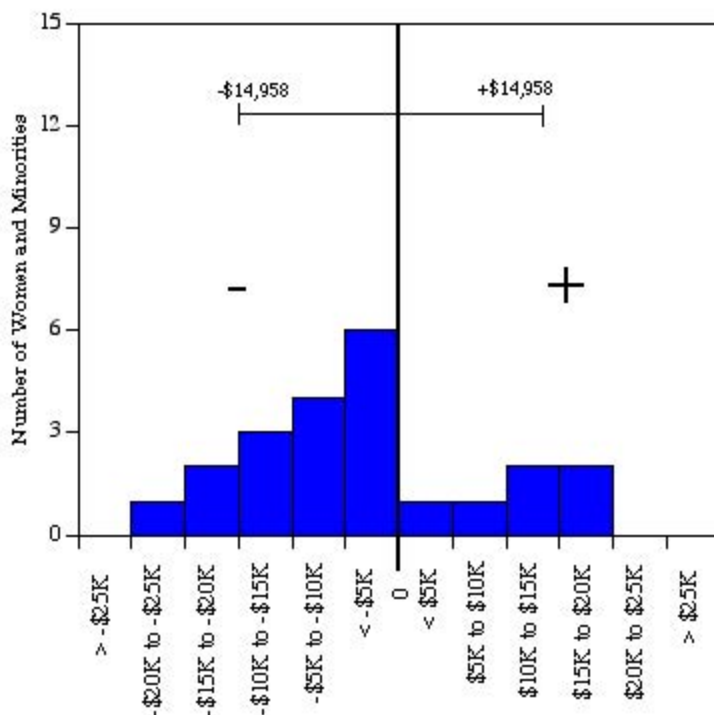


Residual = actual salary - predicted salary

Predicted salary = $\$33.37 * 10^5 + (-\$1,380 * (\text{year of hire})) + (\$11,729 * (\text{degree indicator})) + (-\$1,216 * (\text{degree year})) + (\$961 * (\text{year of birth}))$

Standard error = \$13,692

University of California, Irvine
 Ladder Rank Faculty Salary Residuals
School of Biological Sciences: Women and Minorities
 October 2001 Revised



Residual = actual salary - predicted salary

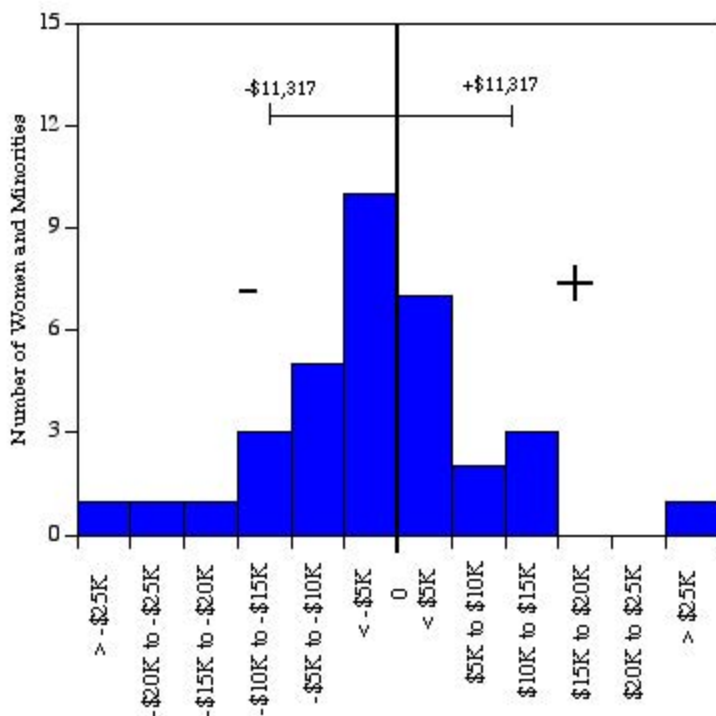
Predicted salary = $\$39.15 * 10^5 + (\$1,018 * (\text{year of hire})) + (-\$4,236 * (\text{degree year})) + (\$1,300 * (\text{year of birth}))$

Standard error = \$14,958

Sources: Payroll/Personnel System Extract as of 10-31-2001, Academic Personnel.

The Henry Samueli School of Engineering: Women and Minorities

October 2001



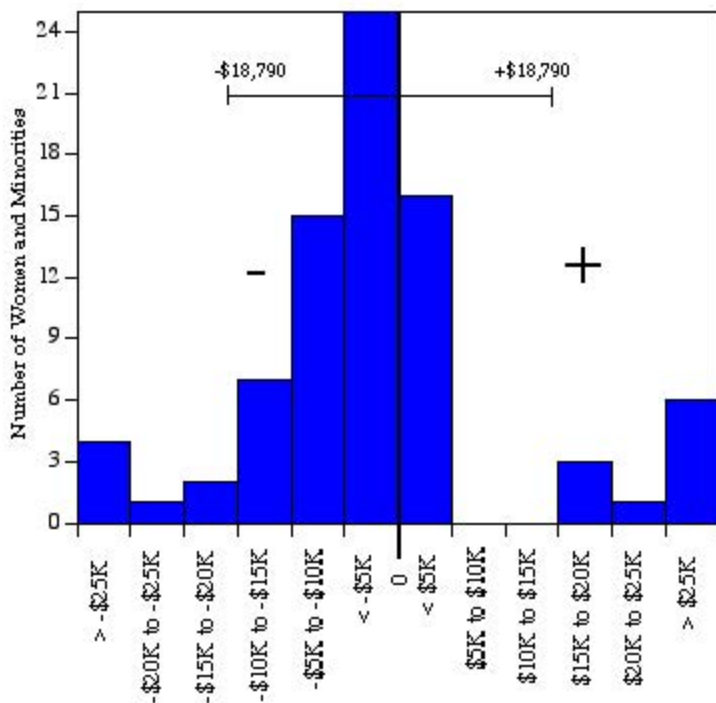
Residual = actual salary - predicted salary

Predicted salary = $\$34.34 * 10^5 + (\$655 * (\text{year of hire})) + (-\$924 * (\text{degree year})) + (-\$1,456 * (\text{year of birth}))$
 $+ (\$18,386 * (\text{degree indicator}))$

Standard error = \$11,317

Sources: Payroll/Personnel System Extract as of 10-31-2001, Academic Personnel.

University of California, Irvine
 Ladder Rank Faculty Salary Residuals
School of Humanities: Women and Minorities
 October 2001



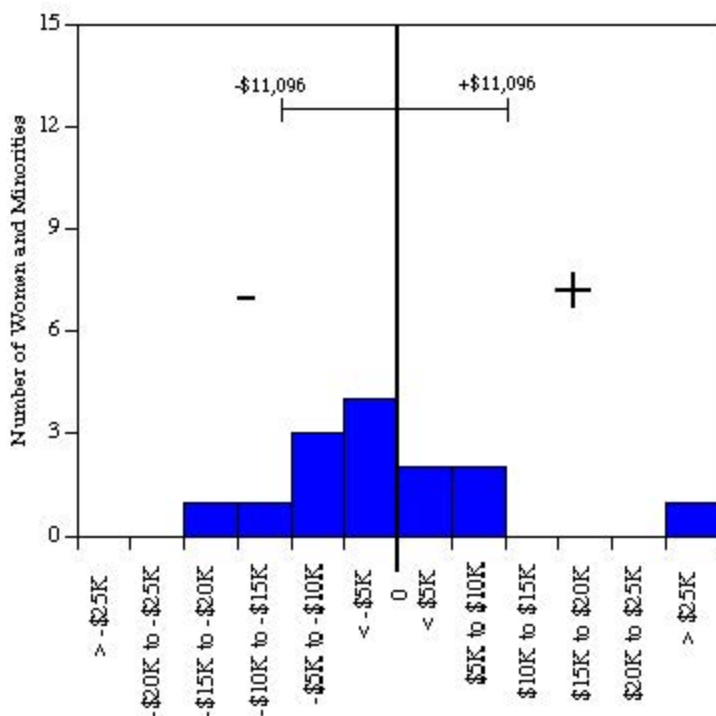
Residual = actual salary - predicted salary

Predicted salary = $\$35.90 * 10^5 + (\$920 * (\text{year of hire})) + (\$2,556 * (\text{degree indicator})) + (-\$2,964 * (\text{degree year})) + (\$275 * (\text{year of birth}))$

Standard error = \$18,790

Sources: Payroll/Personnel System Extract as of 10-31-2001, Academic Personnel.

University of California, Irvine
 Ladder Rank Faculty Salary Residuals
Information & Computer Science: Women and Minorities
 October 2001



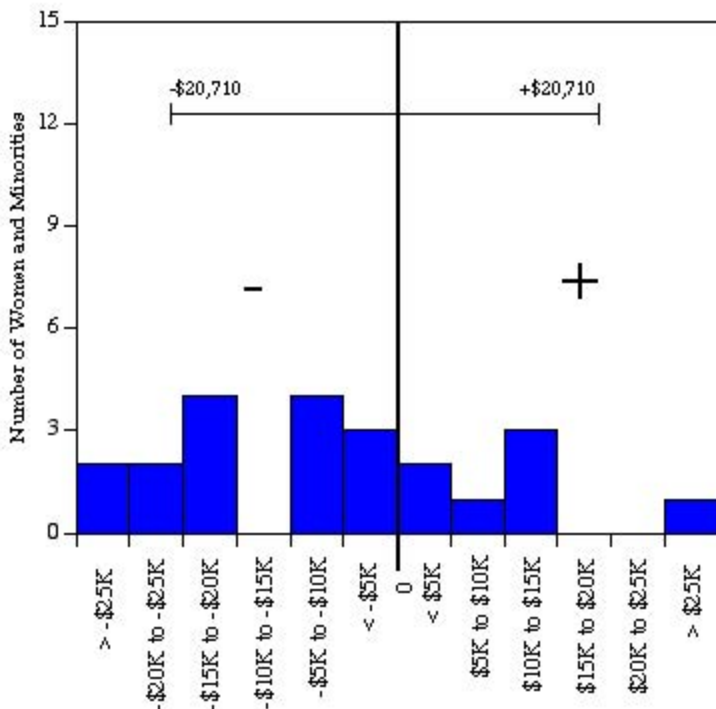
Residual = actual salary - predicted salary

Predicted salary = $\$29.79 * 10^5 + (-\$223 * (\text{year of hire})) + (-\$136 * (\text{degree year})) + (-\$1,111 * (\text{year of birth}))$

Standard error = \$11,096

Sources: Payroll/Personnel System Extract as of 10-31-2001, Academic Personnel.

University of California, Irvine
 Ladder Rank Faculty Salary Residuals
Graduate School of Management: Women and Minorities
 October 2001



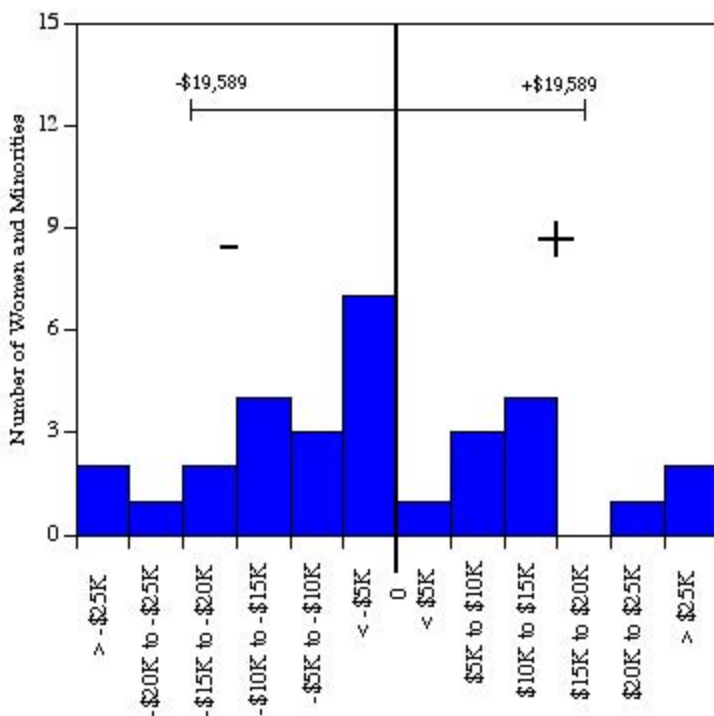
Residual = actual salary - predicted salary

Predicted salary = $\$14.67 * 10^5 + (-\$237 * (\text{year of hire})) + (-\$1,992 * (\text{degree year})) + (\$1,548 * (\text{year of birth})) + (\$27,130 * (\text{degree indicator}))$

Standard error = \$20,710

Sources: Payroll/Personnel System Extract as of 10-31-2001, Academic Personnel.

University of California, Irvine
 Ladder Rank Faculty Salary Residuals
School of Physical Sciences: Women and Minorities
 October 2001 Revised



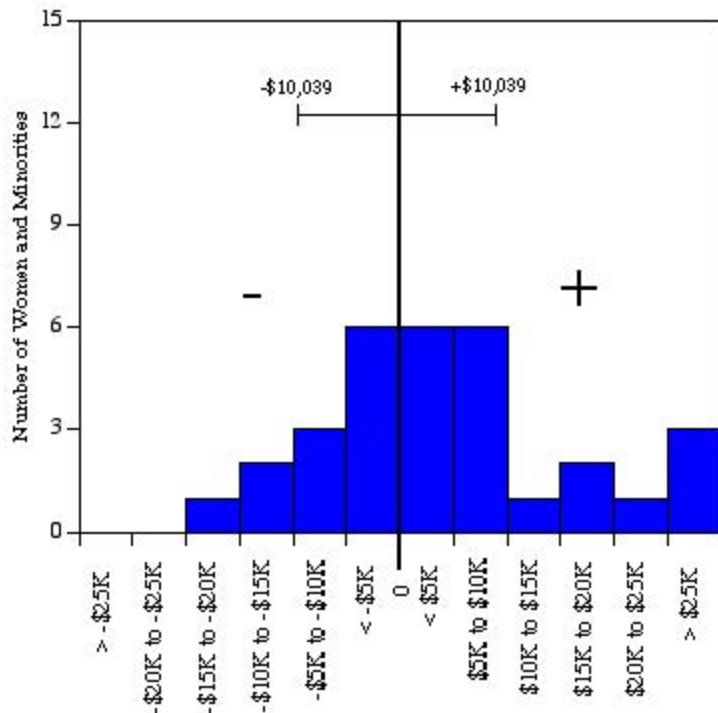
Residual = actual salary - predicted salary

Predicted salary = $\$32.22 * 10^5 + (\$705 * (\text{year of hire})) + (\$803 * (\text{year of birth})) + (-\$3,080 * (\text{degree year}))$

Standard error = \$19,589

Sources: Payroll/Personnel System Extract as of 10-31-2001, Academic Personnel.

University of California, Irvine
 Ladder Rank Faculty Salary Residuals
School of Social Ecology: Women and Minorities
 October 2001



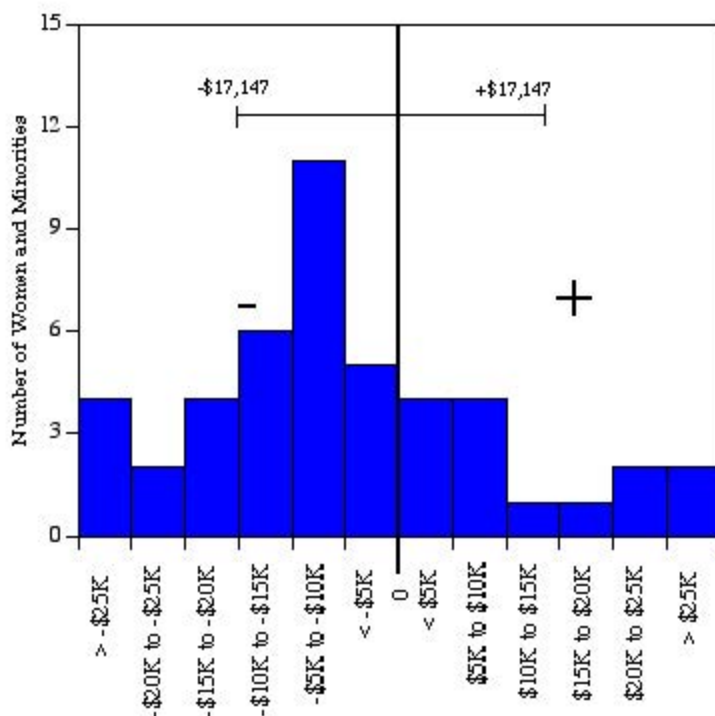
Residual = actual salary - predicted salary

Predicted salary = $\$33.22 * 10^5 + (-\$145 * (\text{year of hire})) + (-\$1,550 * (\text{degree year})) + (\$59 * (\text{year of birth}))$

Standard error = \$10,039

Sources: Payroll/Personnel System Extract as of 10-31-2001, Academic Personnel.

University of California, Irvine
 Ladder Rank Faculty Salary Residuals
School of Social Sciences: Women and Minorities
 October 2001



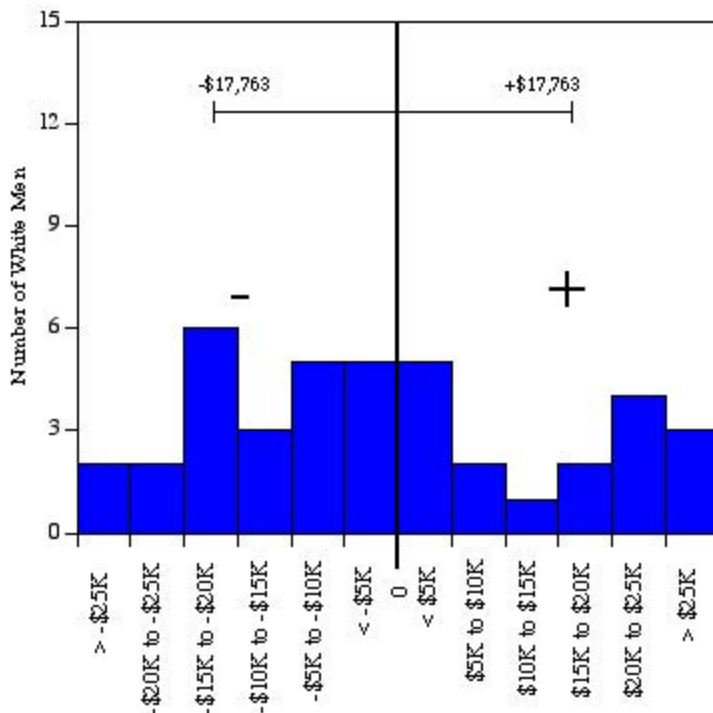
Residual = actual salary - predicted salary

Predicted salary = $\$31.75 * 10^5 + (\$1,114 * (\text{year of hire})) + (-\$3,450 * (\text{degree year})) + (\$788 * (\text{year of birth}))$

Standard error = \$17,147

Sources: Payroll/Personnel System Extract as of 10-31-2001, Academic Personnel.

University of California, Irvine
 Ladder Rank Faculty Salary Residuals
College of Medicine Basic Sciences: White Men
 October 2001



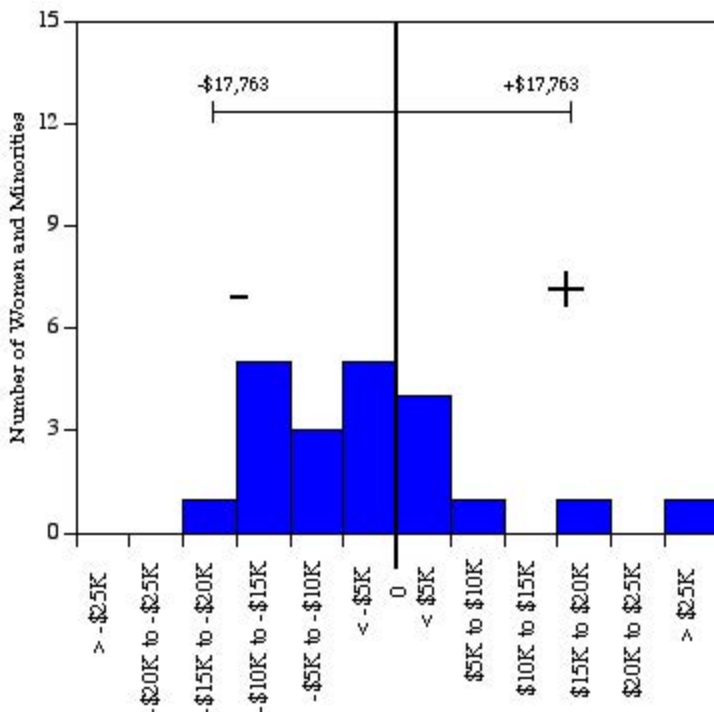
Residual = actual salary - predicted salary; base salary only.

Predicted salary = $\$43.15 * 10^5 + (\$481 * (\text{year of hire})) + (-\$1,882 * (\text{degree year})) + (-\$742 * (\text{year of birth}))$

Standard error = \$17,763

Sources: Payroll/Personnel System Extract as of 10-31-2001, Academic Personnel.

University of California, Irvine
 Ladder Rank Faculty Salary Residuals
College of Medicine Basic Sciences Women and Minorities
 October 2001



Residual = actual salary - predicted salary; base salary only.

Predicted salary = $\$43.15 * 10^5 + (\$481 * (\text{year of hire})) + (-\$1,882 * (\text{degree year})) + (-\$742 * (\text{year of birth}))$

Standard error = \$17,763

Sources: Payroll/Personnel System Extract as of 10-31-2001, Academic Personnel.