

# The Academic Senate

Jeff Barrett  
Divisional Chair  
Academic Senate  
2020-2021

# The University of California

- The University of California consists of ten campuses.
- It is governed by a Board of Regents with authority granted by the Constitution of the State of California.
- Article IX, Section 9: “The University of California shall constitute a public trust, to be administered by the existing corporation known as ‘The Regents of the University of California,’ with full powers of organization and government....”
- The University of California is autonomous: “The university shall be entirely independent of all political or sectarian influence and kept free therefrom in the appointment of its regents and in the administration of its affairs....”
- The Regents have delegated authority to the Officers of the University and to the Academic Senate.

# Delegated Authority

## The Academic Senate:

- determines the conditions for admission and degrees.
- authorizes and supervises courses and curricula.
- determines the membership of faculties and councils.
- advises Chancellors concerning campus budgets and advises the President concerning the University budget.
- has the right to lay before the Board of Regents, through the President, its views on any matter pertaining to the conduct and welfare of the University.
- advises the President and the Chancellors concerning the administration of the libraries of the University.
- selects a committee to approve the publication of manuscripts by the University of California Press.

---

# UC Irvine Academic Senate Councils and Committees

## Councils

- Council on Academic Personnel (CAP)
- Council on Educational Policy (CEP)
- Council on Equity and Inclusion (CEI)
- Council on Faculty Welfare, Diversity, and Academic Freedom (CFW)
- Council on Planning and Budget (CPB)
- Council on Research, Computing, and Libraries (CORCL)
- Council on Teaching, Learning, and Student Experience (CTLSE)
- Council on Undergraduate Admissions & Relations with Schools (CUARS)
- Graduate Council (GC)

## Committees

- Committee on Committees (COC)
- Committee on Privilege and Tenure (CPT)
- Committee on Rules and Jurisdiction (CRJ)
- Committee on Scholarly Honors and Awards (SHA)

## Boards

- Academic Integrity Review Board (AIRB) – a subcommittee of CTLSE
- Academic Program Review Board (APRB) – a subcommittee of CEP & GC
- Board on Undergraduate Scholarships, Honors & Financial Aids (BUSHFA) – a subcommittee of CTLSE
- Campuswide Honors Collegium Board (CHCB) – a subcommittee of CTLSE

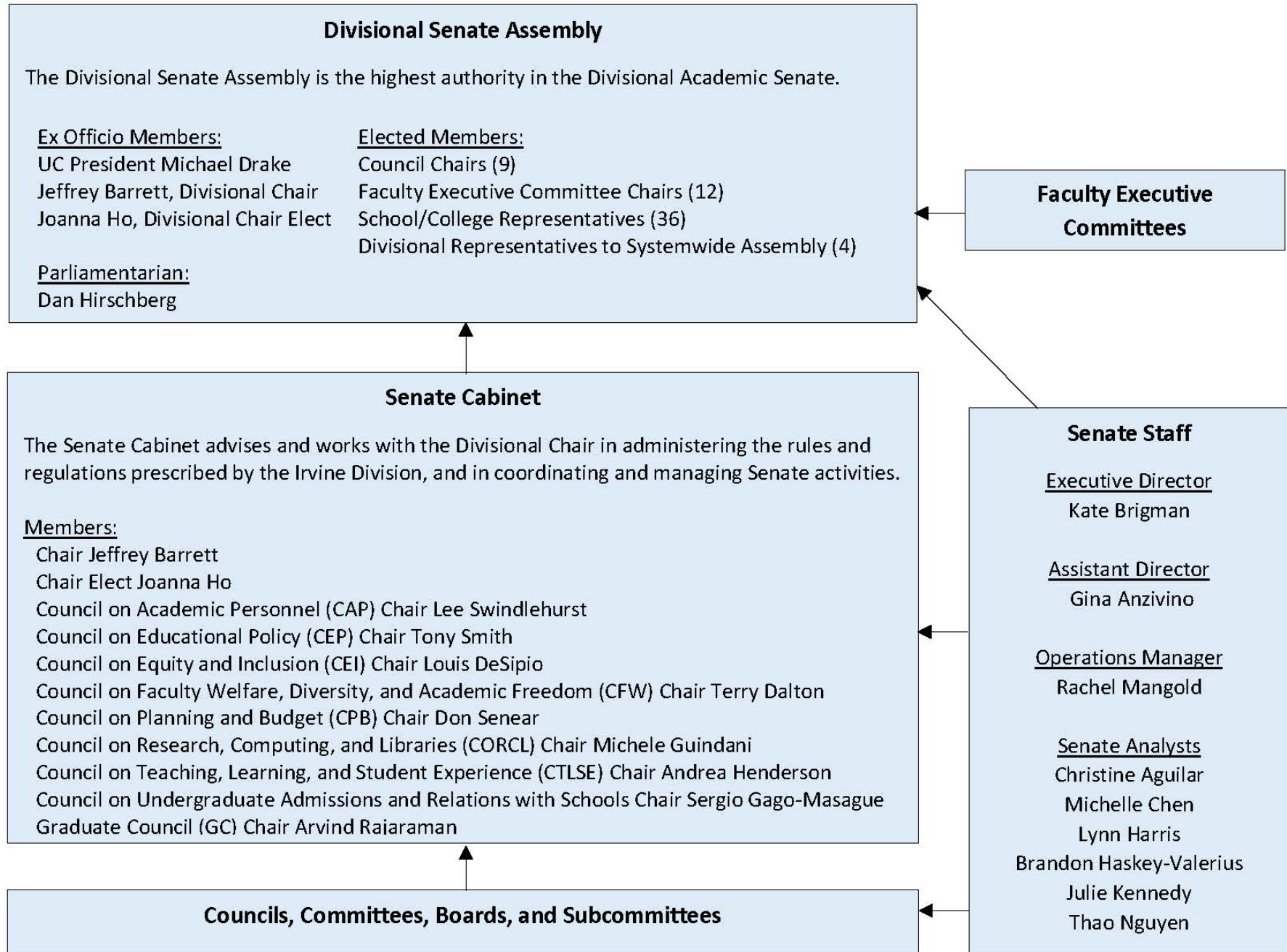
## Subcommittees

- Subcommittee on Courses & Continuing, Part-Time, & Summer Session Education (SCOC) – a subcommittee of CEP
- Subcommittee on International Education (SCIE) – a subcommittee of CEP & GC
- Policy and Assessment Subcommittee (SCPA) – a subcommittee of CEP
- Subcommittee on Computing (SubComp) – a subcommittee of CORCL

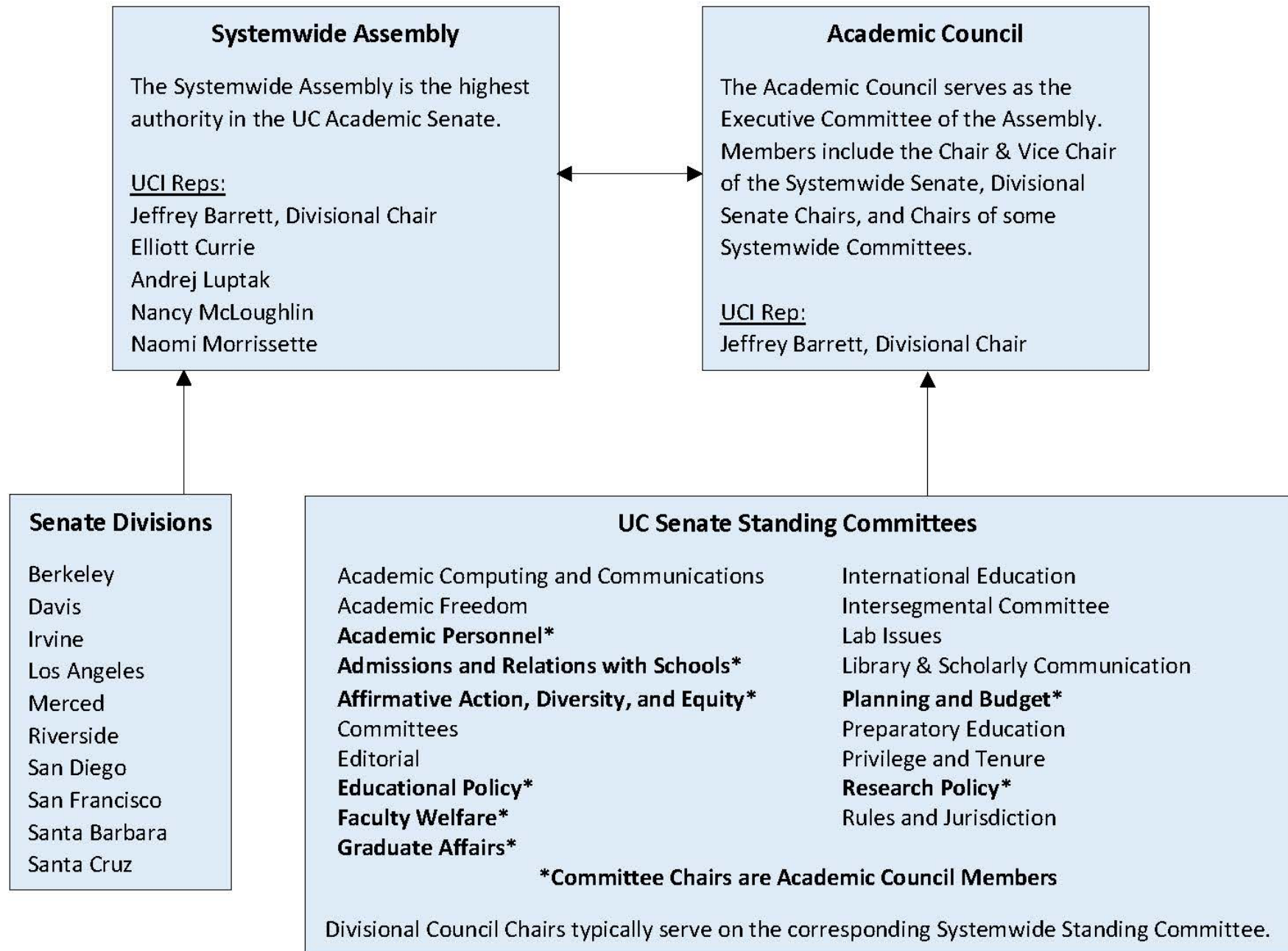
## Special Committees

- Grad Council/CPB Subcommittee on SSGPDP Third Year Review (SSGPDP)
-

# UC Irvine Academic Senate



# Systemwide Academic Senate



# Senate contacts

Jeff Barrett, Chair

[chair@uci.edu](mailto:chair@uci.edu)

Kate Brigman, Executive Director

[kate.brigman@uci.edu](mailto:kate.brigman@uci.edu)

Senate Website: [senate.uci.edu](http://senate.uci.edu)