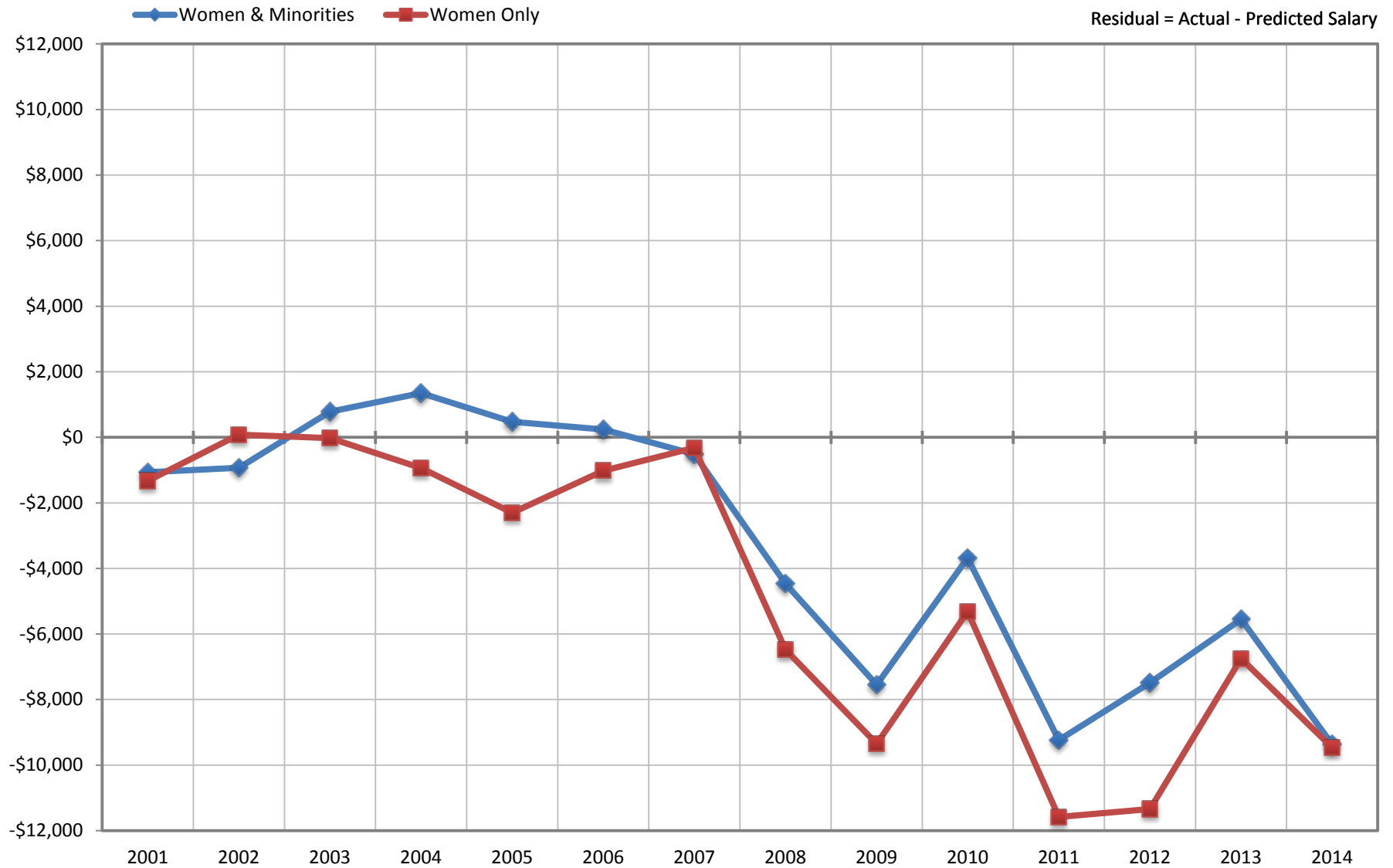


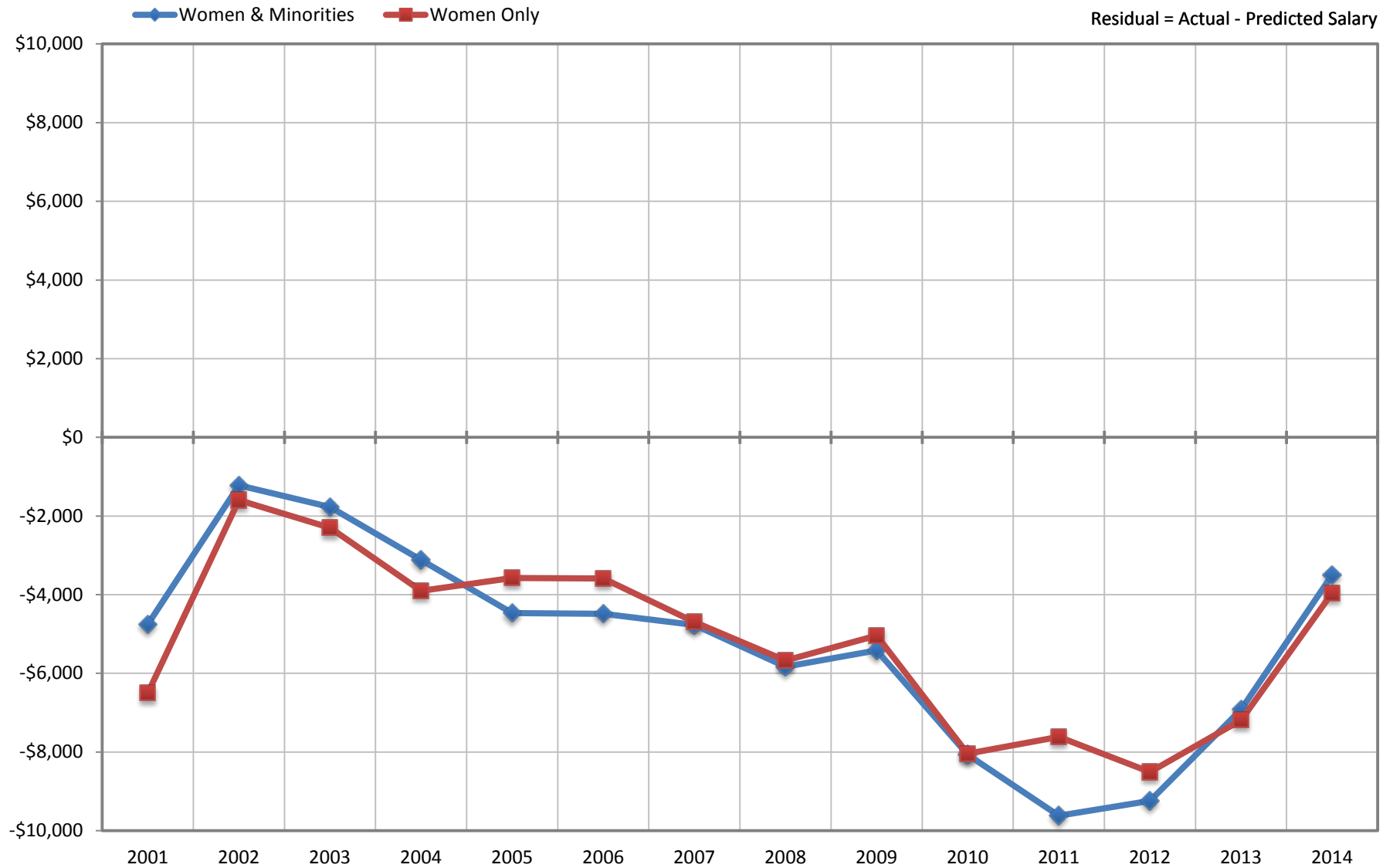
**Ladder Ranks Faculty Salary Mean Residuals: Women and Minorities
School of Medicine (Basic Science)
October 2001 through 2014**



UC Irvine Office of Academic Personnel

Sources: Payroll/Personnel Extracts as of October 2001 through 2014, Academic Personnel, Pay Equity Study.

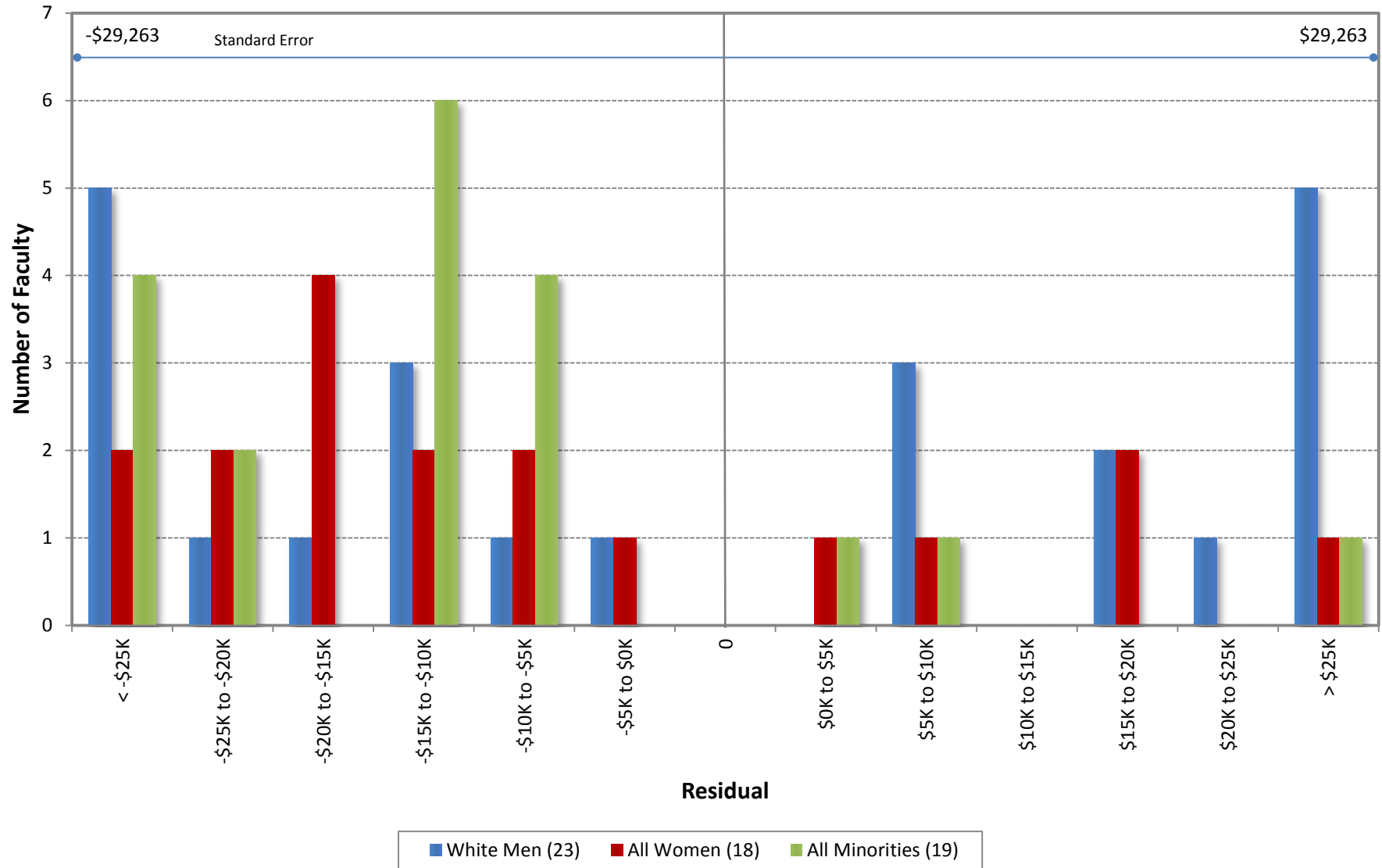
**Ladder Ranks Faculty Salary Mean Residuals: Women and Minorities
School of Medicine (Clinical Science)
October 2001 through 2014**



UC Irvine Office of Academic Personnel

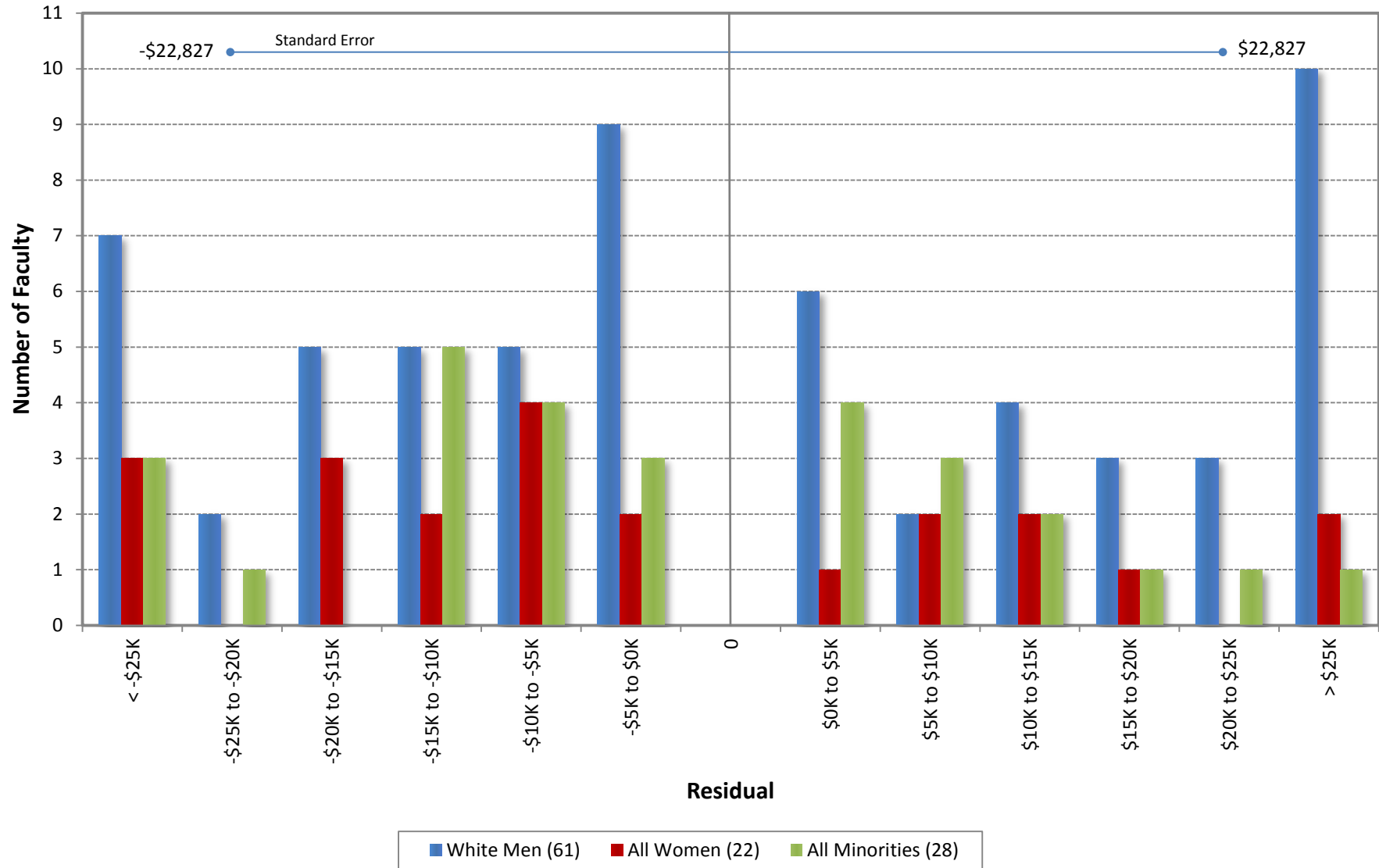
Sources: Payroll/Personnel Extracts as of October 2001 through 2014 Academic Personnel, Pay Equity Study.

University of California, Irvine
Ladder Rank Faculty Salary Residuals
School of Medicine (Basic Science)
October 2014



$$\text{Predicted Salary} = 4803211.610302 + (\text{DegreeLevel} * 0) + (\text{DegreeYear} * -3639.0831239319) + (\text{RegRankYr} * 1285.76244542886)$$

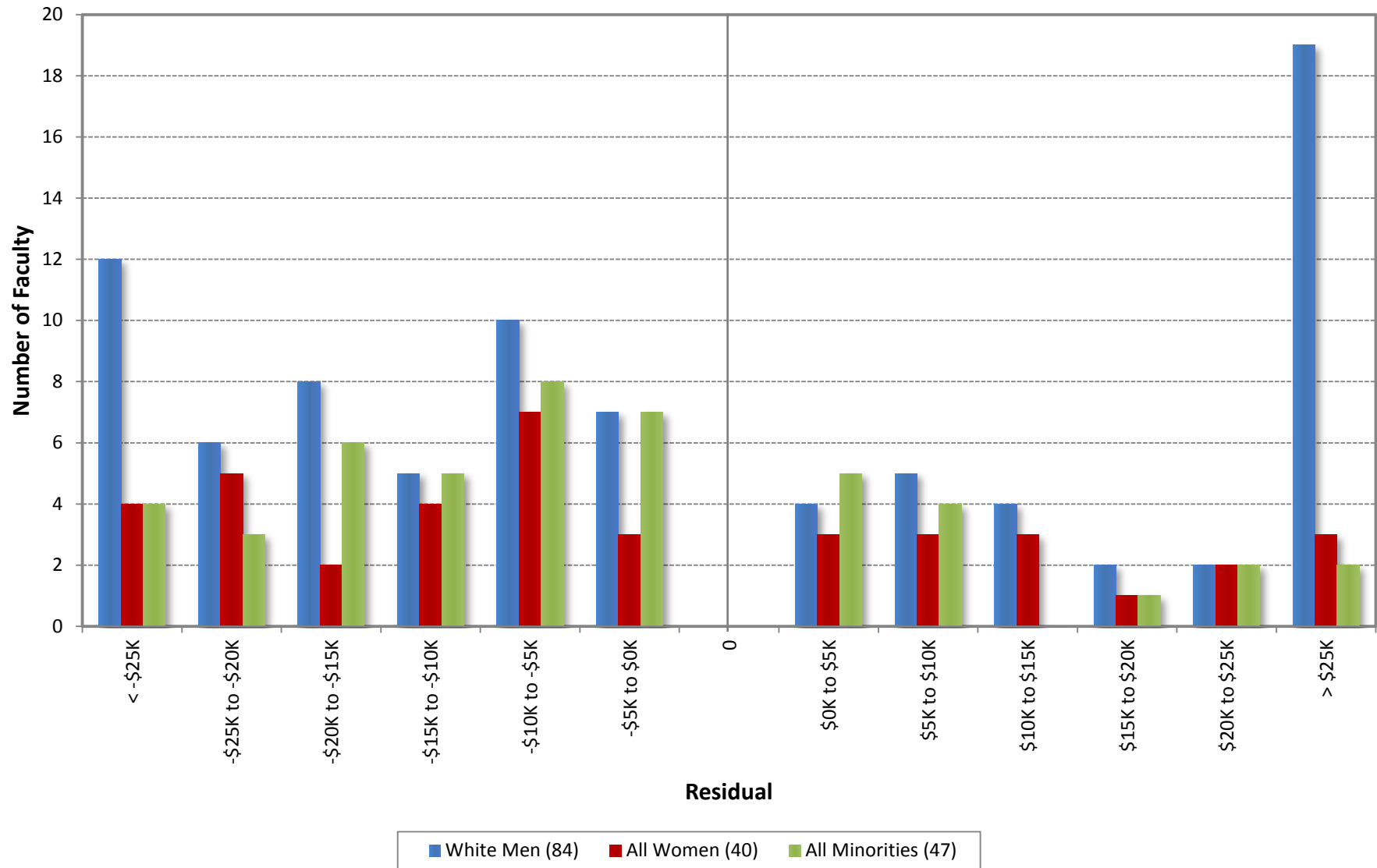
University of California, Irvine
Ladder Rank Faculty Salary Residuals
School of Medicine (Clinical Science)
October 2014



Residual = Actual Salary - Predicted Salary

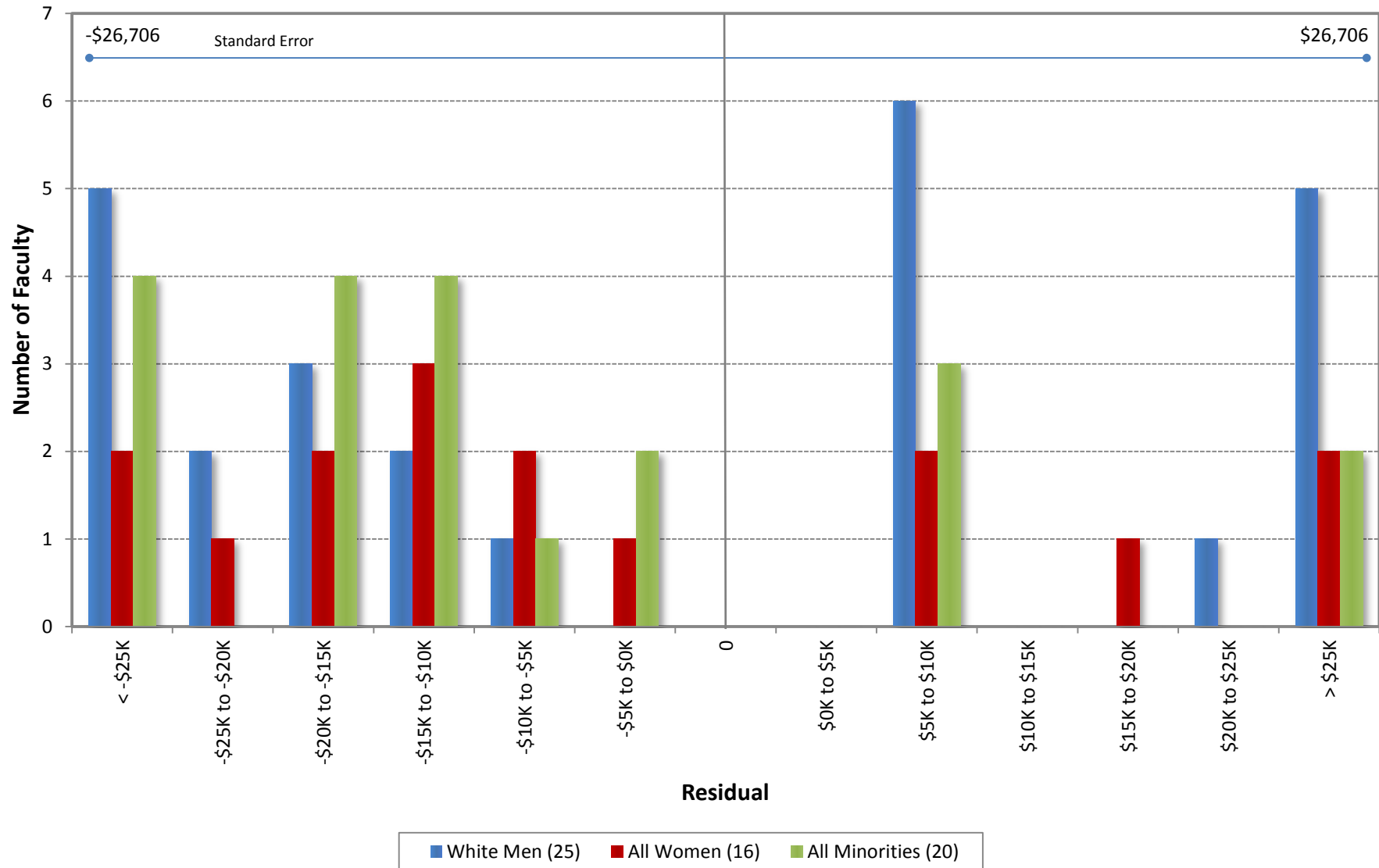
Predicted Salary = $5422145.59861956 + (\text{DegreeLevel} * 0) + (\text{DegreeYear} * -2181.36720871436) + (\text{RegRankYr} * -481.618176386061)$

University of California, Irvine
Ladder Rank Faculty Salary Residuals
School of Medicine - All
October 2014



Residual = Actual Salary - Predicted Salary

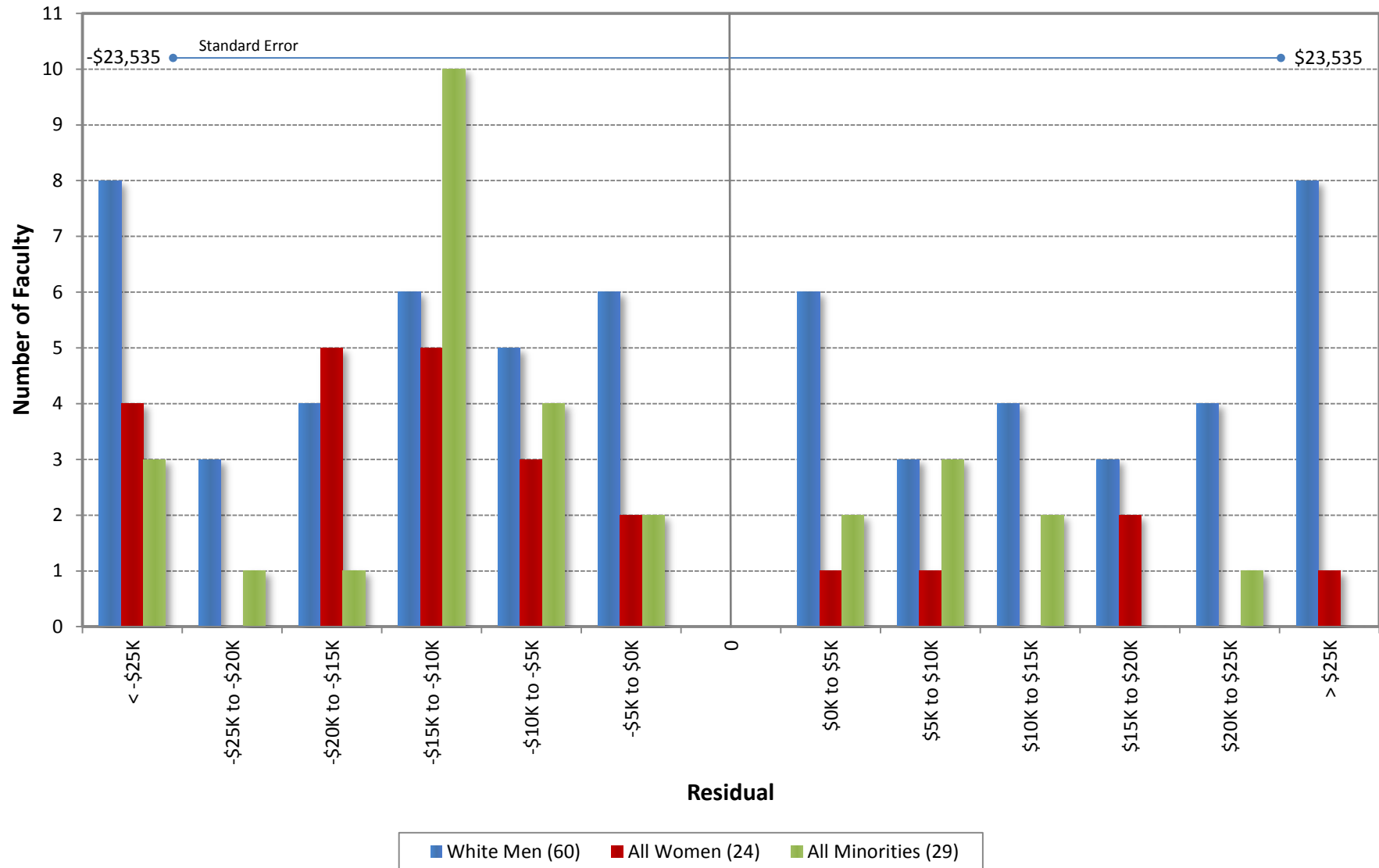
University of California, Irvine
Ladder Rank Faculty Salary Residuals
School of Medicine (Basic Science)
October 2013



Residual = Actual Salary - Predicted Salary

Predicted Salary = $3916627.8212709 + (\text{DegreeLevel} * 0) + (\text{DegreeYear} * -3595.31301644779) + (\text{RegRankYr} * 1681.81963730002)$

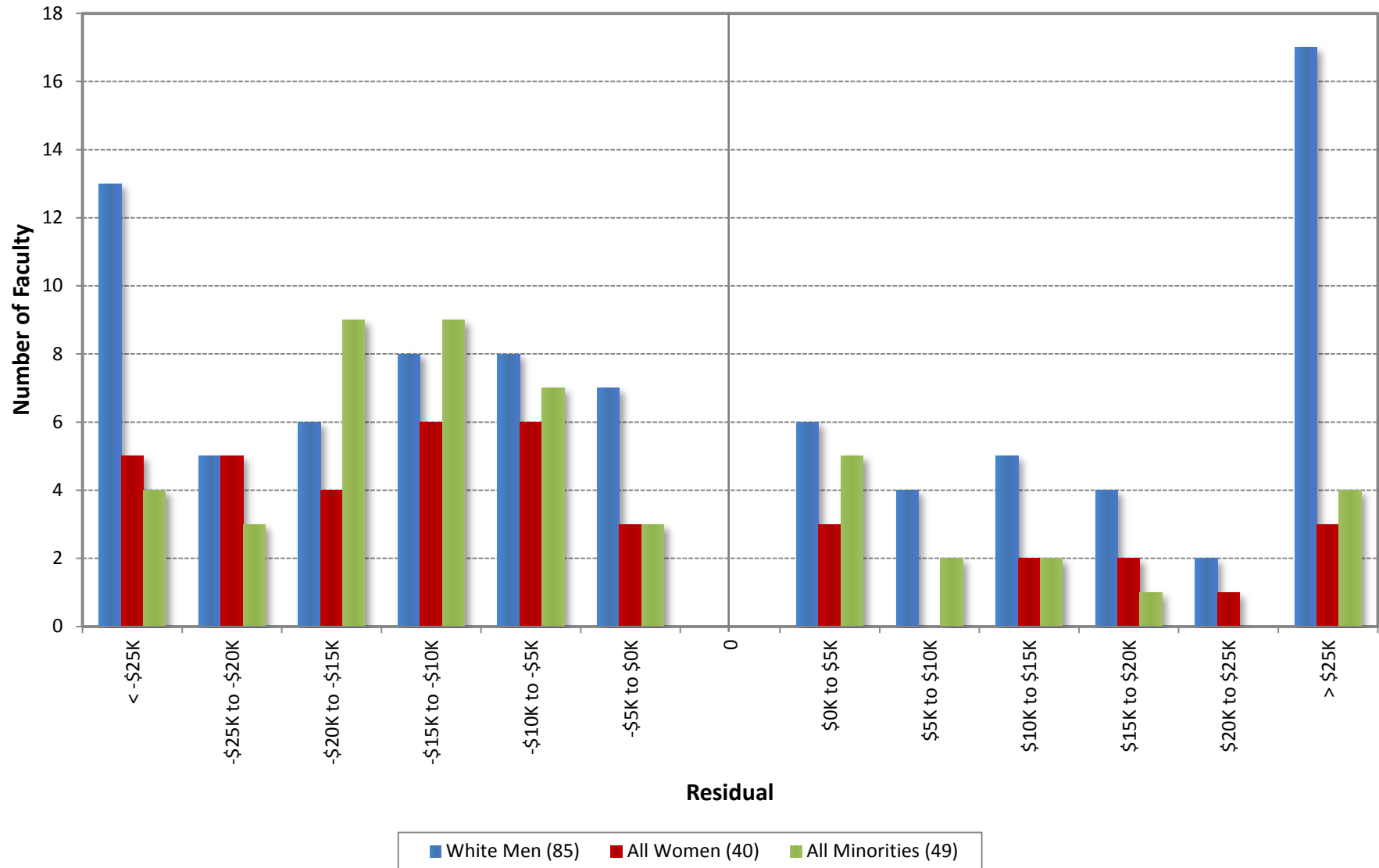
University of California, Irvine
Ladder Rank Faculty Salary Residuals
School of Medicine (Clinical Science)
October 2013



Residual = Actual Salary - Predicted Salary

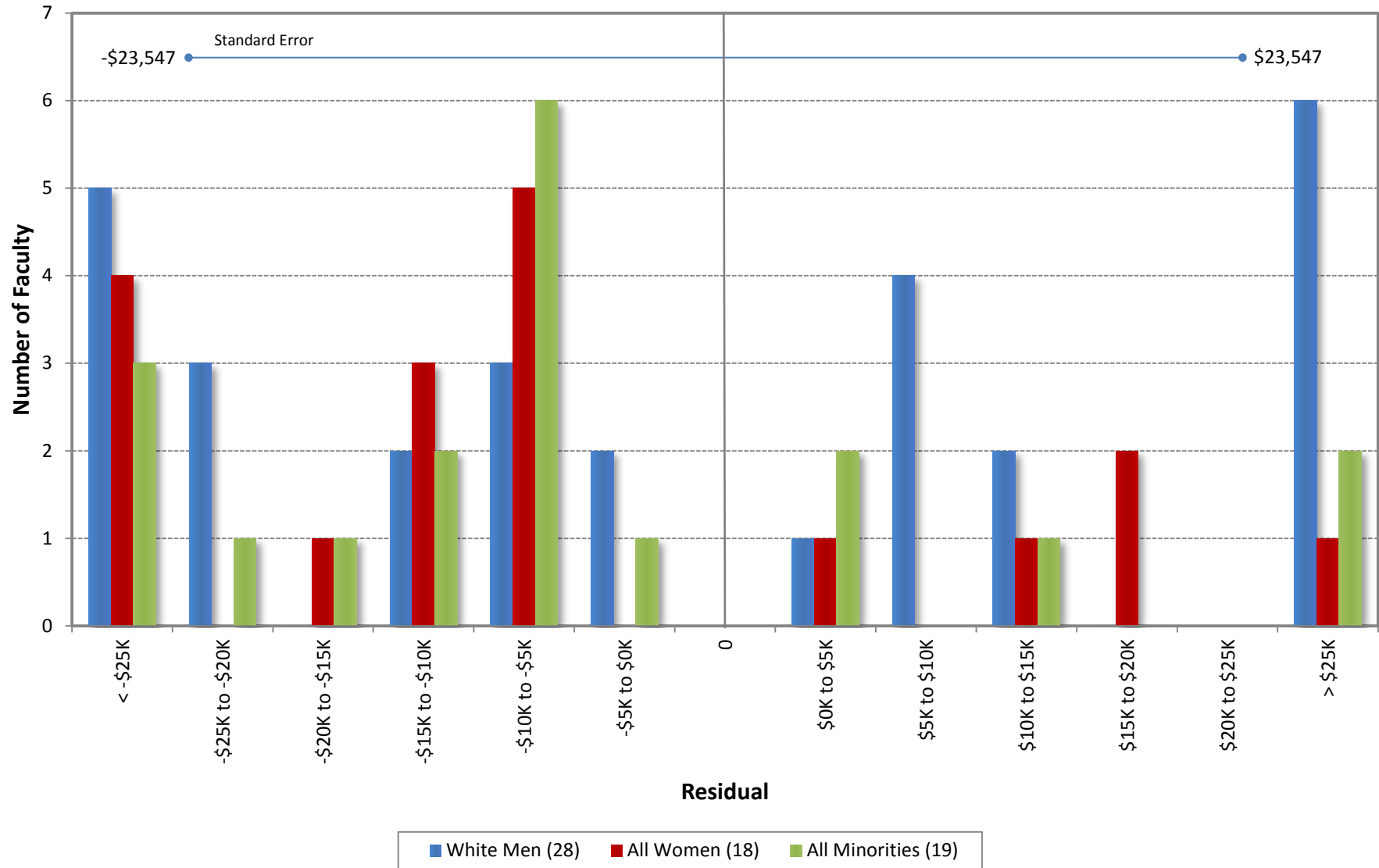
Predicted Salary = $5148797.50770932 + (\text{DegreeLevel} * 0) + (\text{DegreeYear} * -1939.54475911795) + (\text{RegRankYr} * -586.977076344961)$

University of California, Irvine
Ladder Rank Faculty Salary Residuals
School of Medicine - All
October 2013



Residual = Actual Salary - Predicted Salary

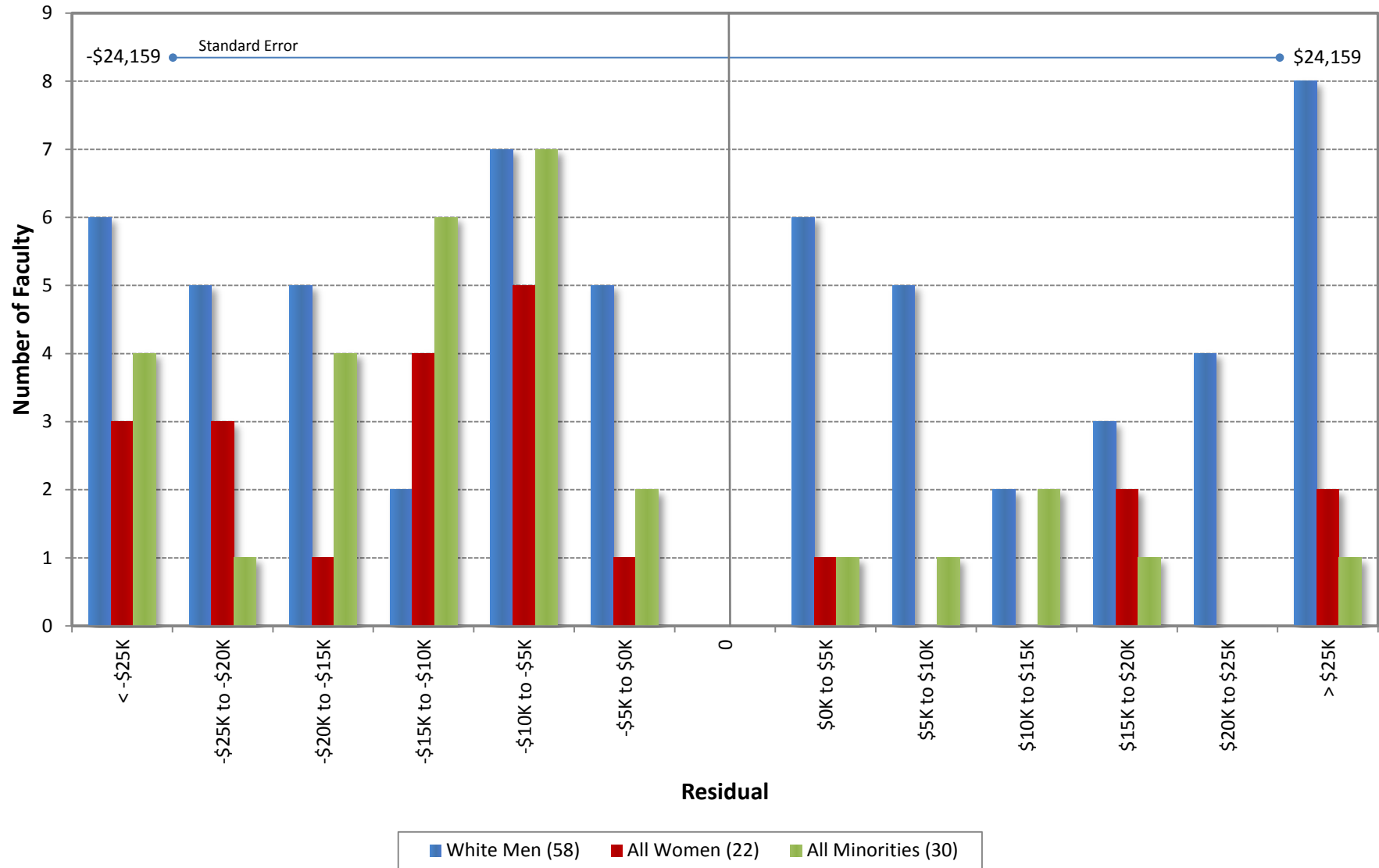
University of California, Irvine
Ladder Rank Faculty Salary Residuals
School of Medicine (Basic Science)
October 2012



Residual = Actual Salary - Predicted Salary

Predicted Salary = $3992386.56350604 + (\text{DegreeLevel} * 0) - (\text{DegreeYear} * 3739.18006602449) + (\text{RegRankYr} * 1783.91911751732)$

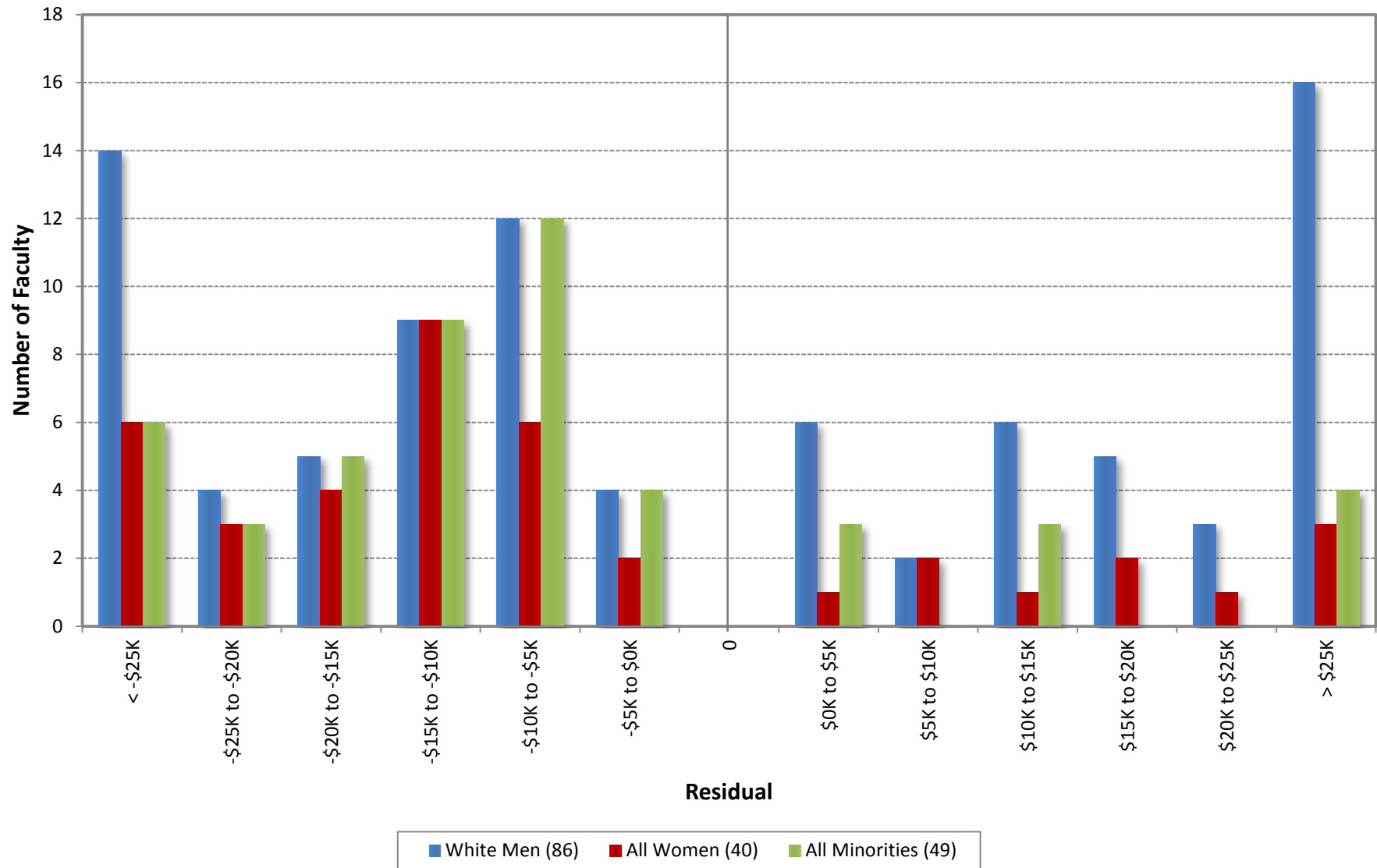
University of California, Irvine
Ladder Rank Faculty Salary Residuals
School of Medicine (Clinical Science)
October 2012



Residual = Actual Salary - Predicted Salary

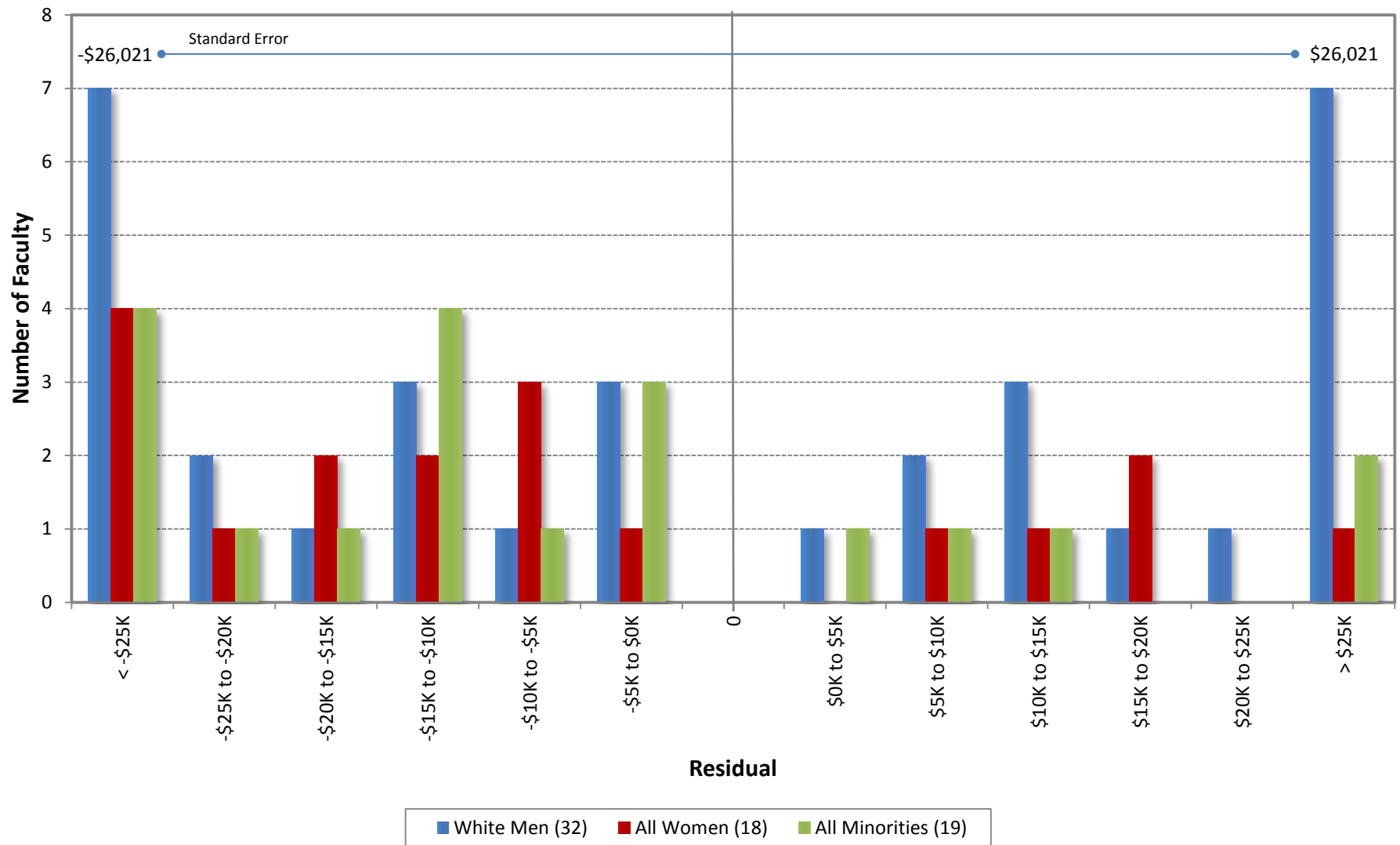
Predicted Salary = $4943032.92898106 + (\text{DegreeLevel} * 0) - (\text{DegreeYear} * 1781.54690251918) - (\text{RegRankYr} * 643.492742188919)$

University of California, Irvine
 Ladder Rank Faculty Salary Residuals
School of Medicine - All
 October 2012



Residual = Actual Salary - Predicted Salary

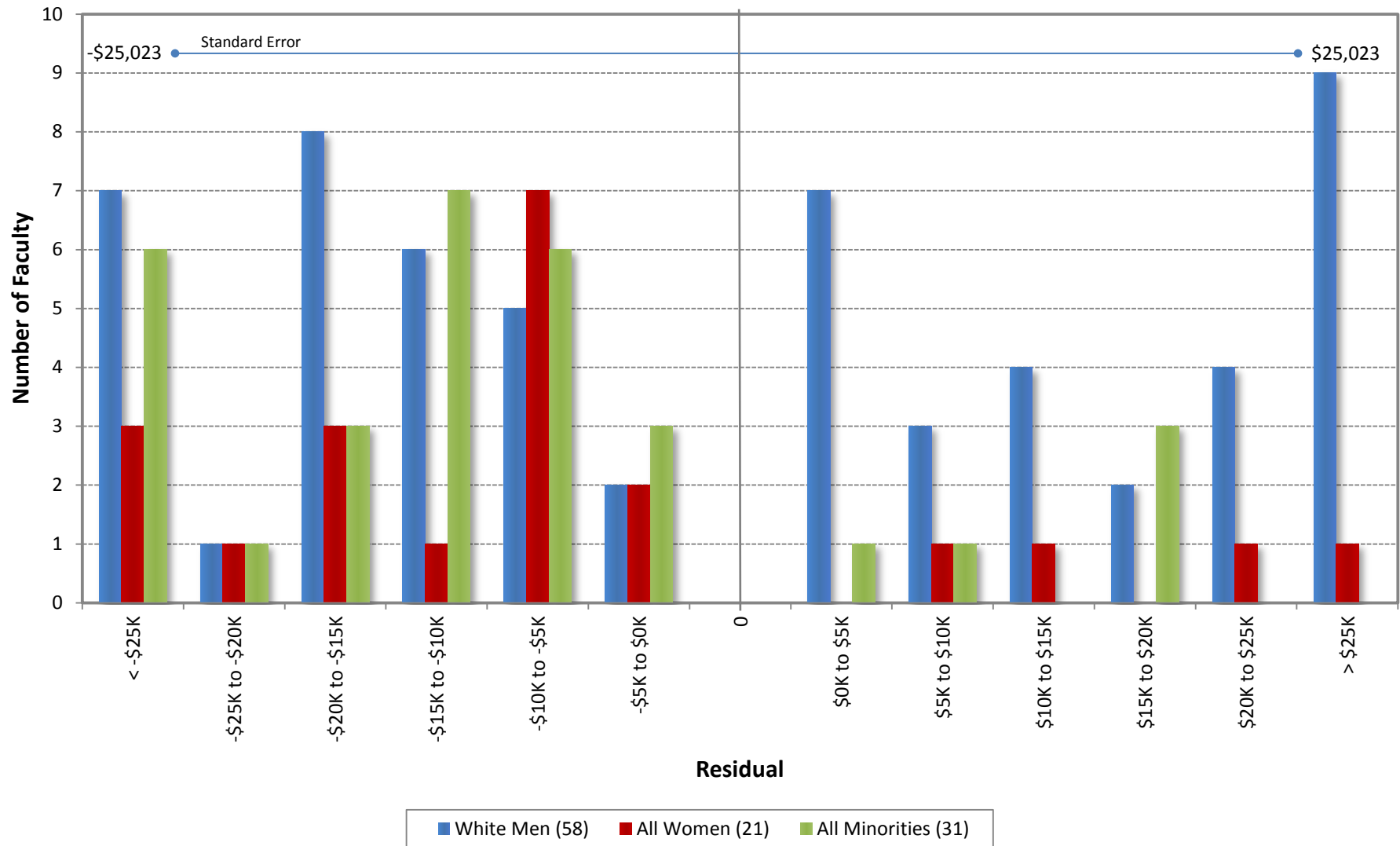
University of California, Irvine
Ladder Rank Faculty Salary Residuals
School of Medicine (Basic Science)
October 2011



Residual = Actual Salary - Predicted Salary

Predicted Salary = $4297670.90086938 + (\text{DegreeLevel} * 0) - (\text{DegreeYear} * 3689.42697151741) + (\text{RegRankYr} * 1580.59895739124)$

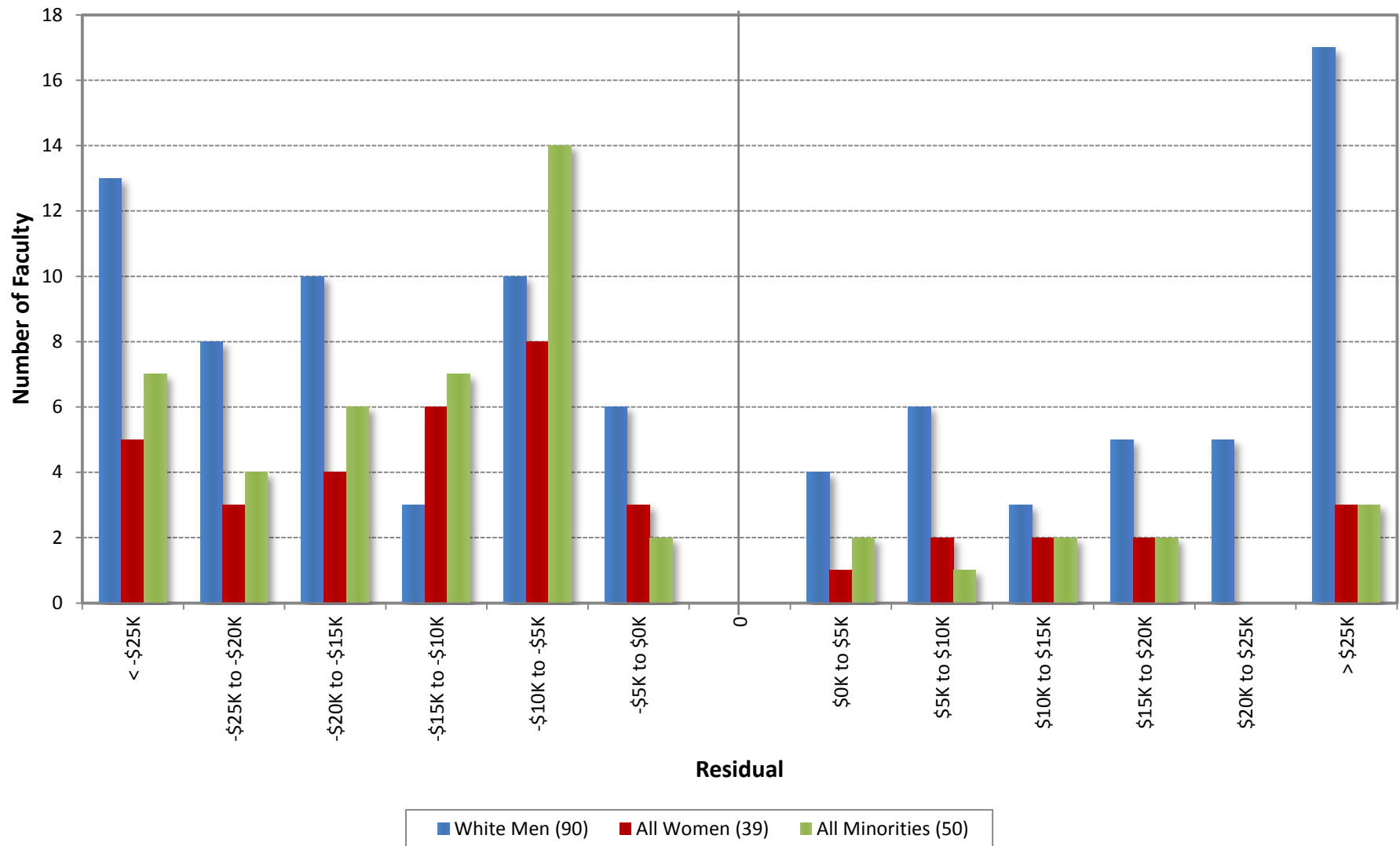
University of California, Irvine
Ladder Rank Faculty Salary Residuals
School of Medicine (Clinical Science)
October 2011



Residual = Actual Salary - Predicted Salary

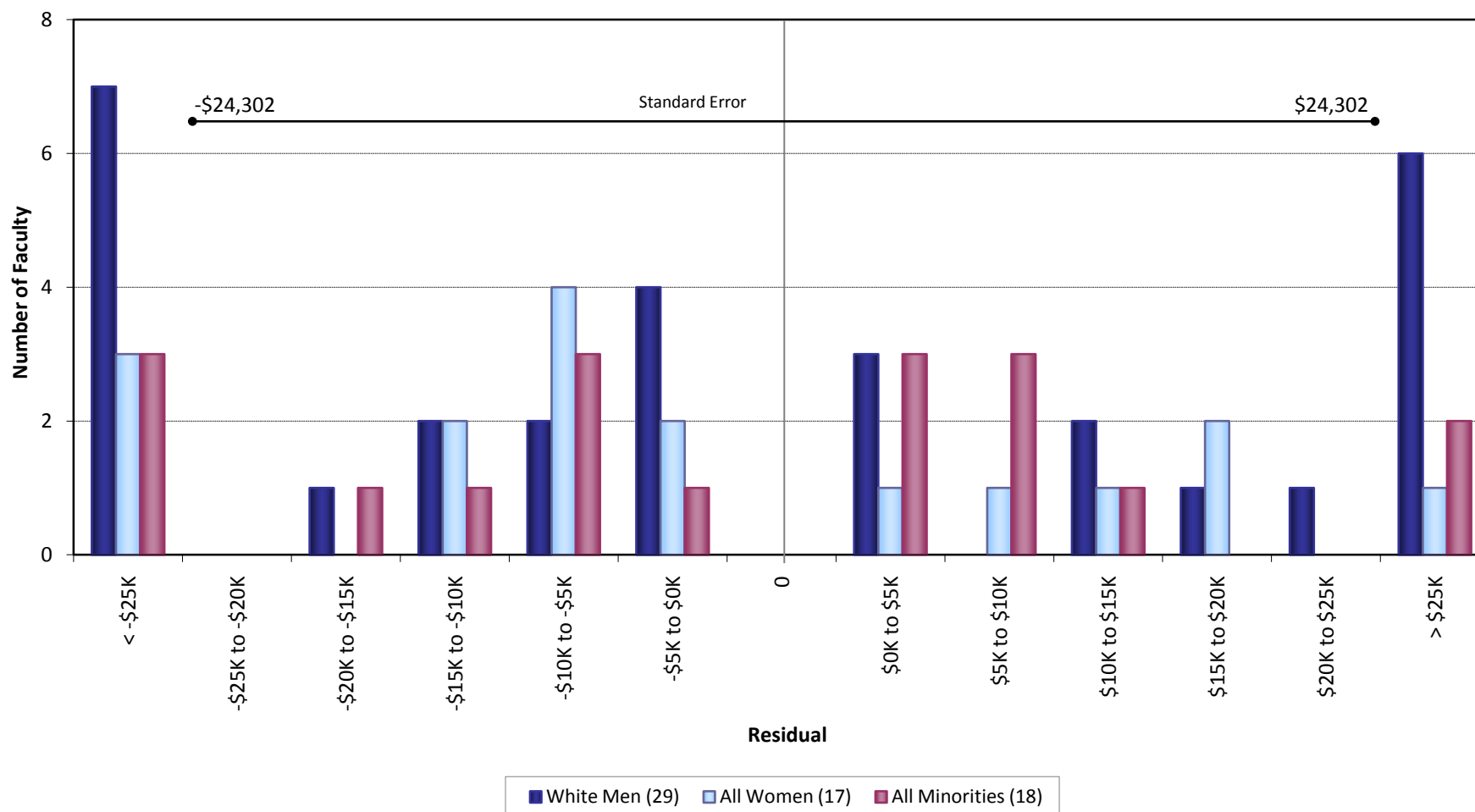
Predicted Salary = $4410171.75714013 + (\text{DegreeLevel} * 0) - (\text{DegreeYear} * 1716.62967097099) - (\text{RegRankYr} * 442.867645936485)$

University of California, Irvine
Ladder Rank Faculty Salary Residuals
School of Medicine - All
October 2011



Residual = Actual Salary - Predicted Salary

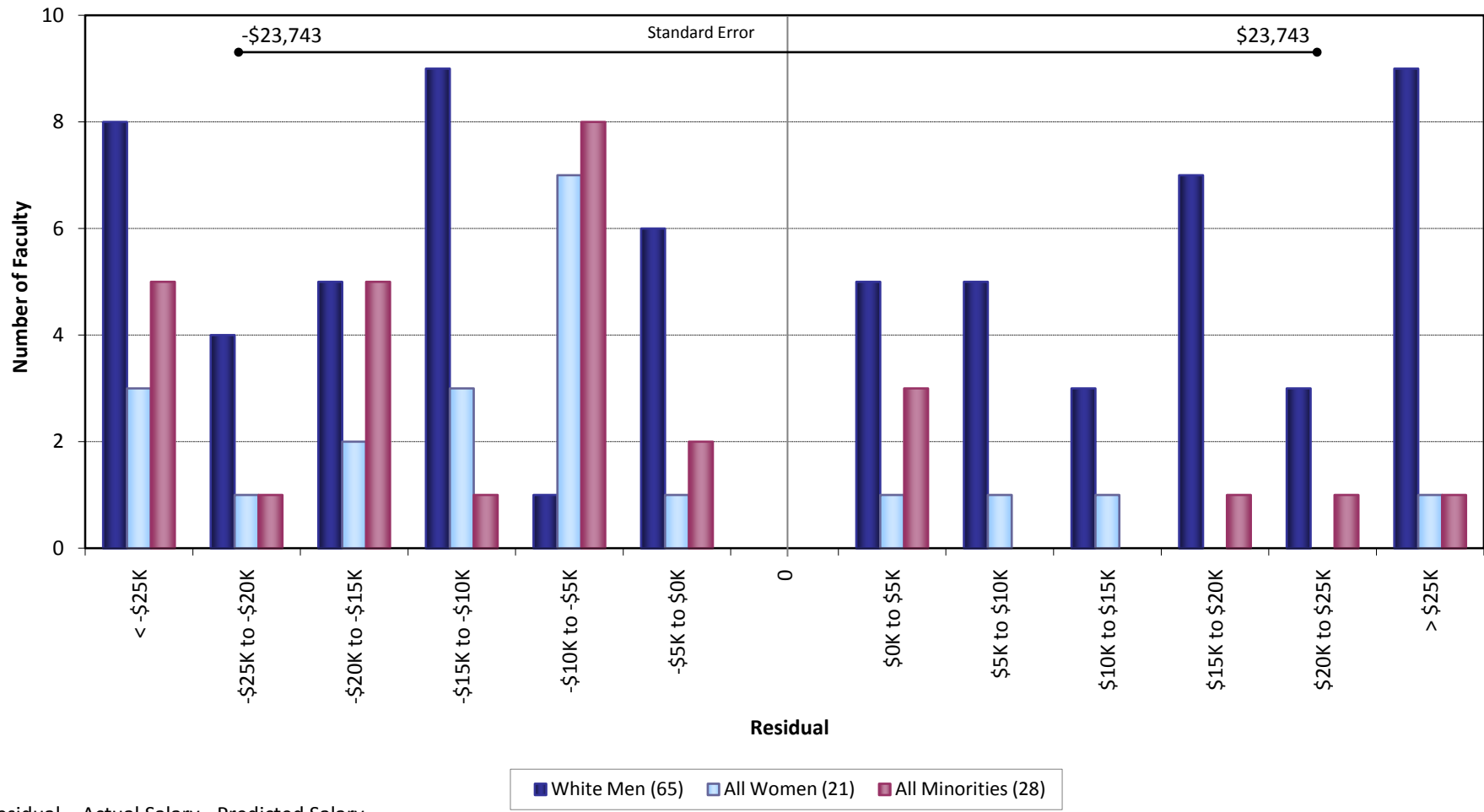
University of California, Irvine
Ladder Rank Faculty Salary Residuals
School of Medicine - Basic Science
October 2010



Residual = Actual Salary - Predicted Salary

Predicted Salary = $5036818.11971626 + (\text{DegreeLevel} * 0) - (\text{DegreeYear} * 3676.39004430117) + (\text{RegRankYr} * 1193.04363692163)$

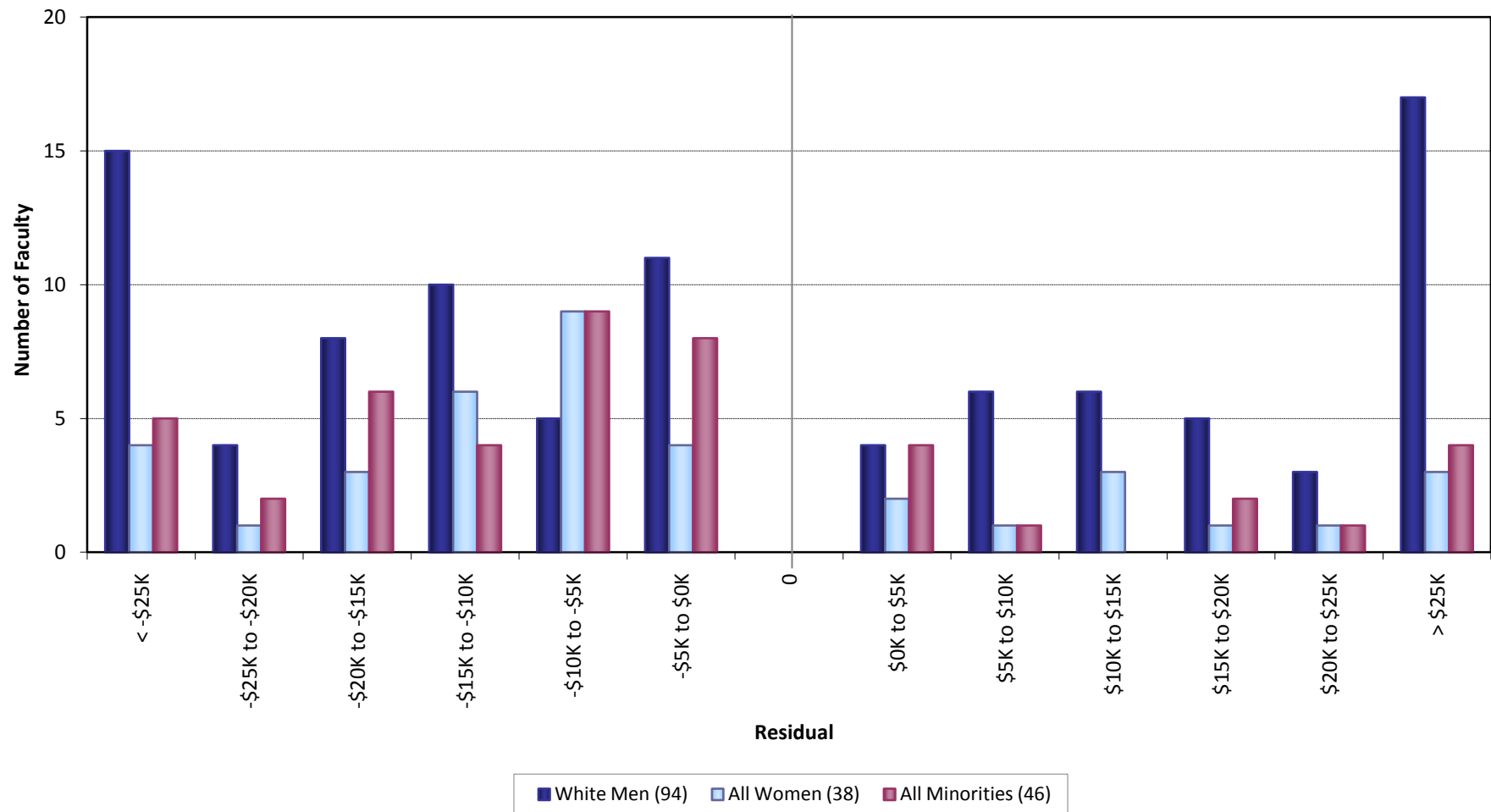
University of California, Irvine
 Ladder Rank Faculty Salary Residuals
School of Medicine - Clinical Sciences
 October 2010



Residual = Actual Salary - Predicted Salary

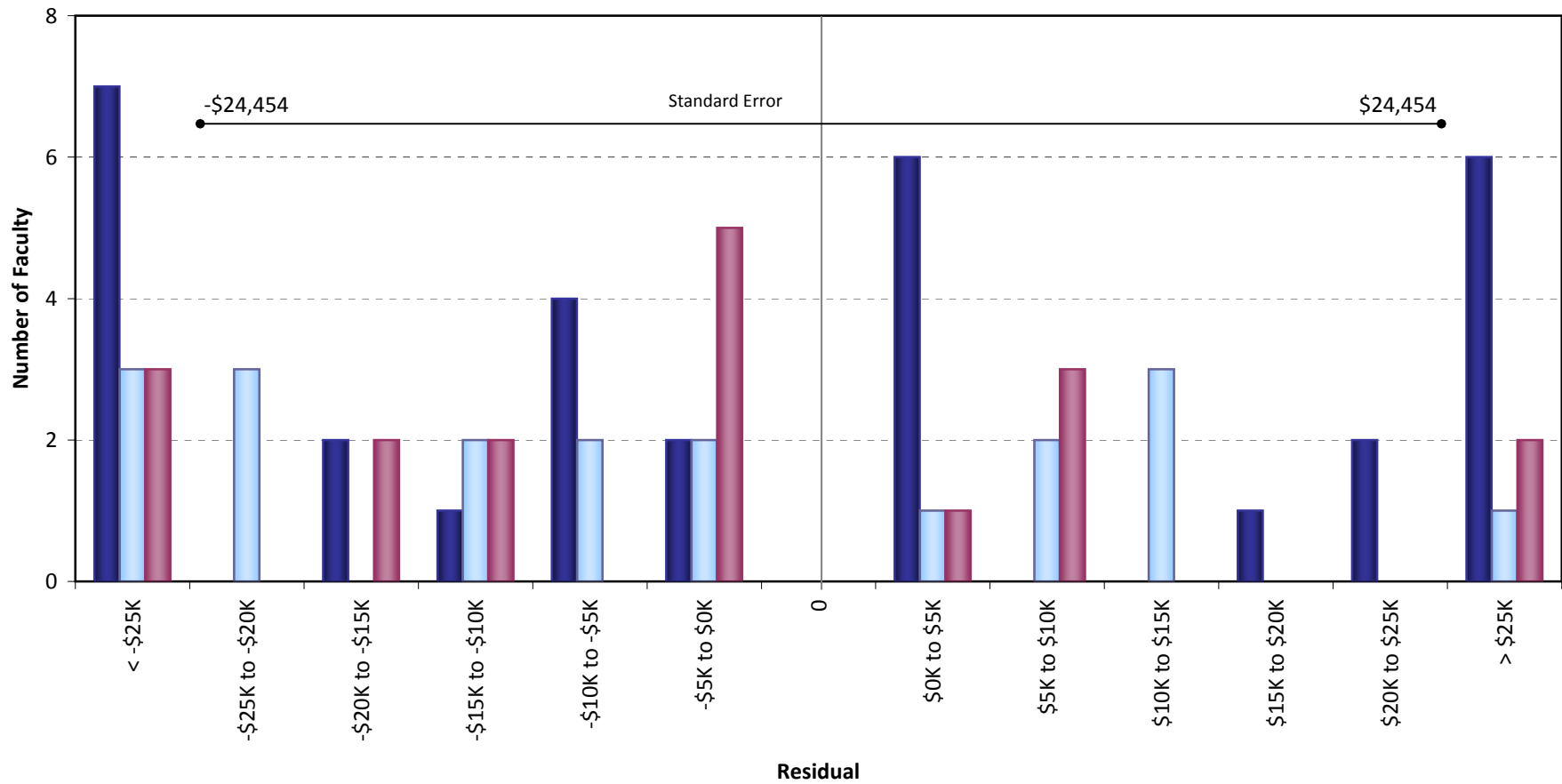
$$\text{Predicted Salary} = 4200773.47685298 + (\text{DegreeLevel} * 0) - (\text{DegreeYear} * 1705.83466242593) - (\text{RegRankYr} * 352.060808216642)$$

University of California, Irvine
Ladder Rank Faculty Salary Residuals
School of Medicine - All
October 2010



Residual = Actual Salary - Predicted Salary

University of California, Irvine
Ladder Rank Faculty Salary Residuals
School of Medicine - Basic Science
October 2009

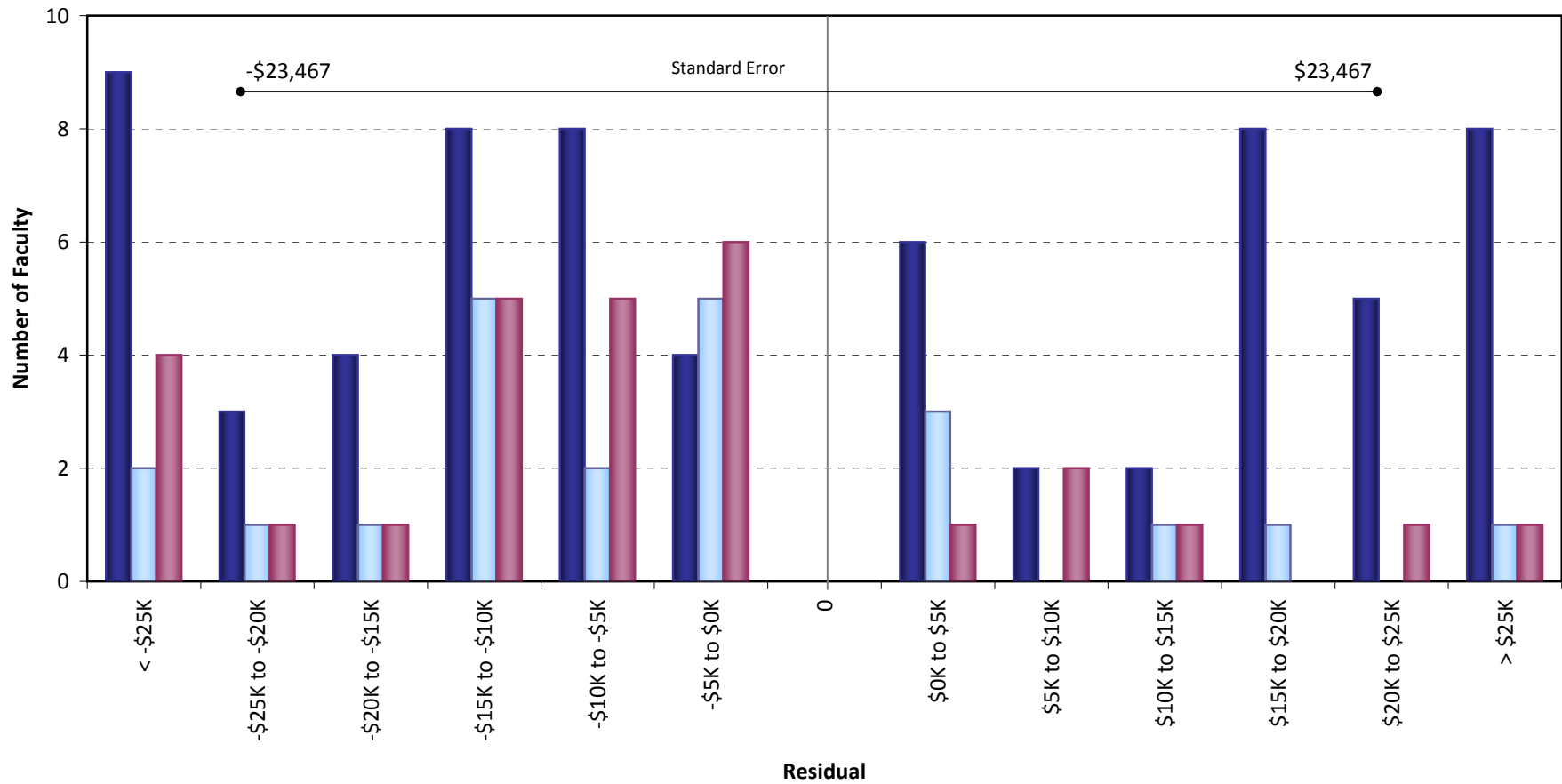


Residual = Actual Salary - Predicted Salary

■ White Men (31) ■ All Women (19) ■ All Minorities (18)

Predicted Salary = $5038138.77994177 + (\text{DegreeLevel} * 0) - (\text{DegreeYear} * 4183.81713914367) + (\text{RegRankYr} * 1696.95952448997)$

University of California, Irvine
Ladder Rank Faculty Salary Residuals
School of Medicine - Clinical Sciences
October 2009

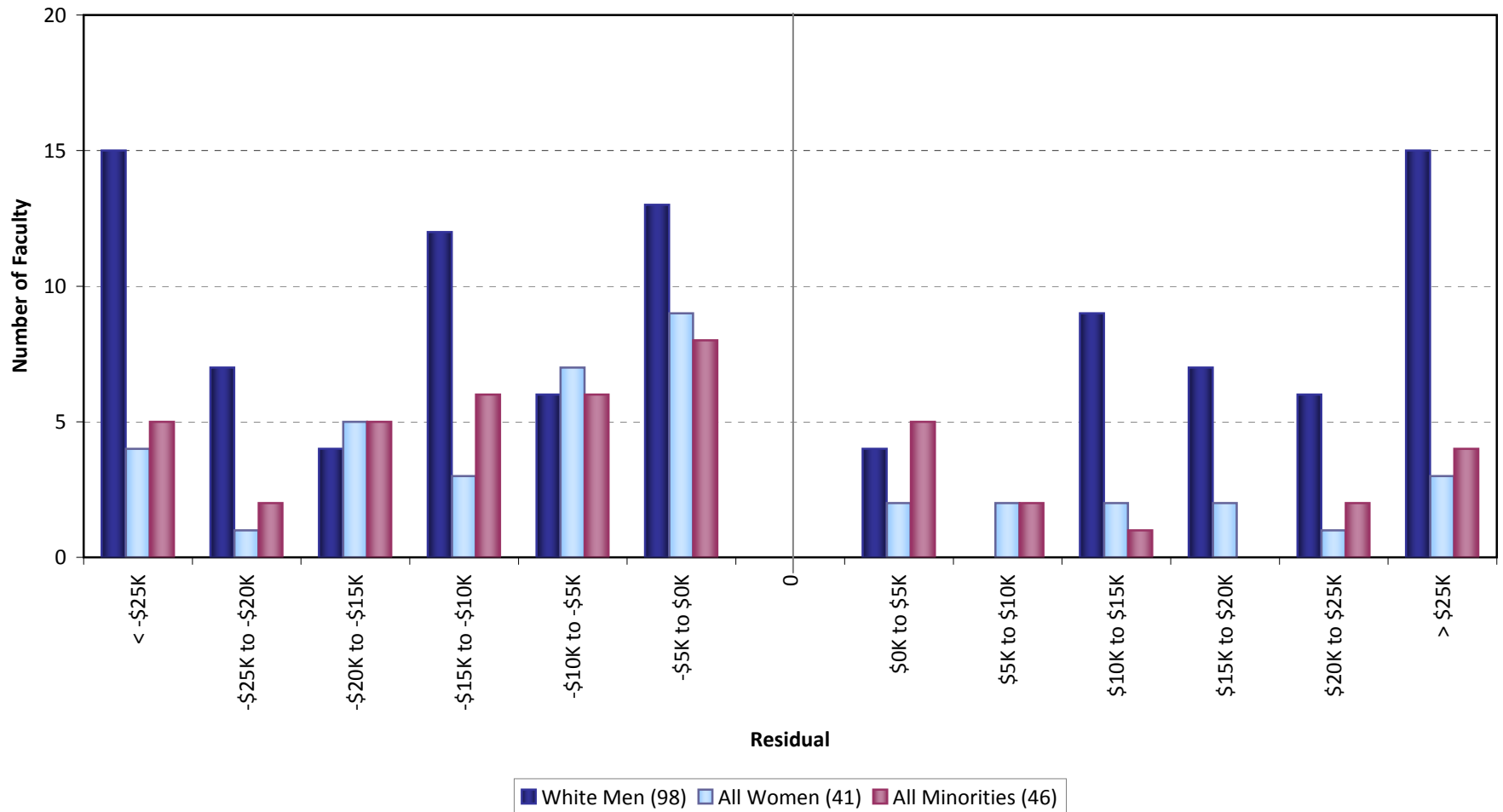


Residual = Actual Salary - Predicted Salary

■ White Men (67) ■ All Women (22) ■ All Minorities (28)

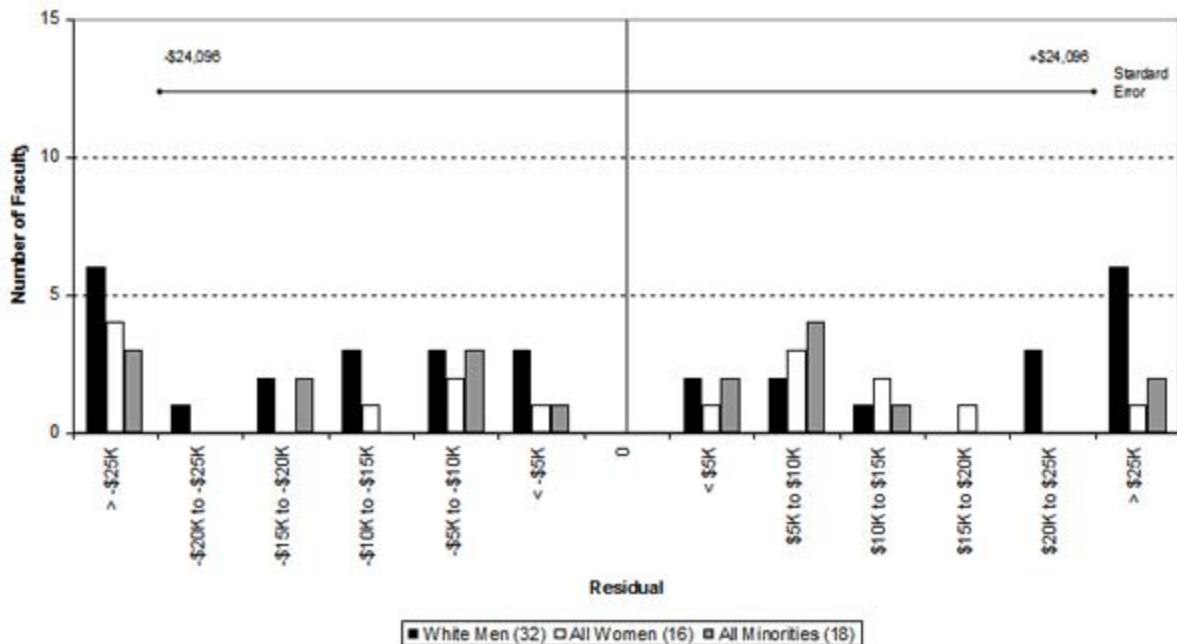
Predicted Salary = $4497990.12182504 + (\text{DegreeLevel} * 0) - (\text{DegreeYear} * 1789.50538965616) - (\text{RegRankYr} * 419.626561476227)$

University of California, Irvine
 Ladder Rank Faculty Salary Residuals
School of Medicine - All
 October 2009



Residual = Actual Salary - Predicted Salary

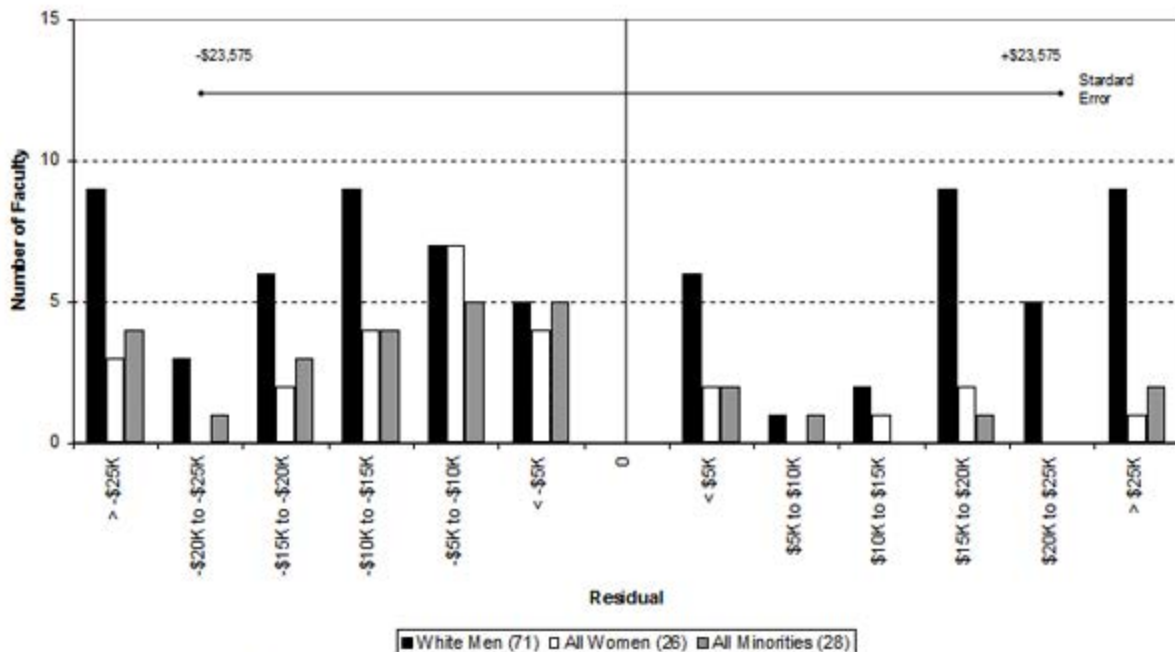
University of California, Irvine
Ladder Rank Faculty Salary Residuals
School of Medicine - Basic Sciences
October 2008



Residual = Actual Salary - Predicted Salary

Predicted Salary: $5376776 + (\text{degree level} \times 0) - (\text{degree year} \times 4377.55) + (\text{UCI reg rank year} \times 1718.587)$

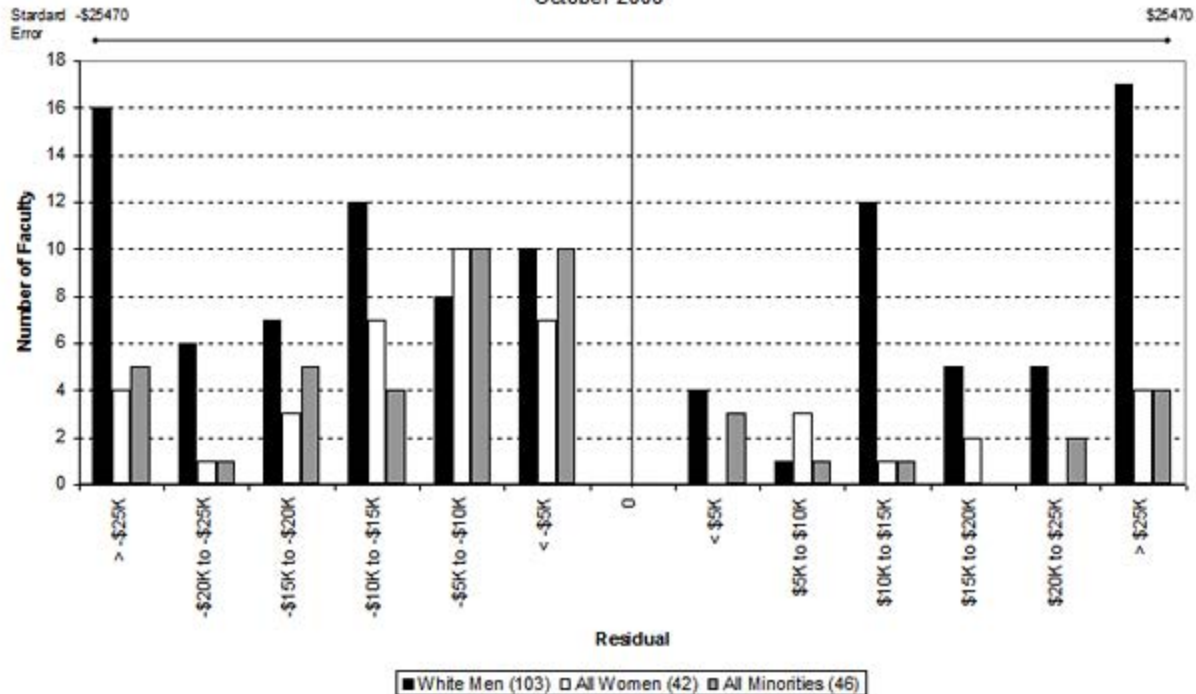
University of California, Irvine
Ladder Rank Faculty Salary Residuals
School of Medicine - Clinical Sciences
October 2008



Residual = Actual Salary - Predicted Salary

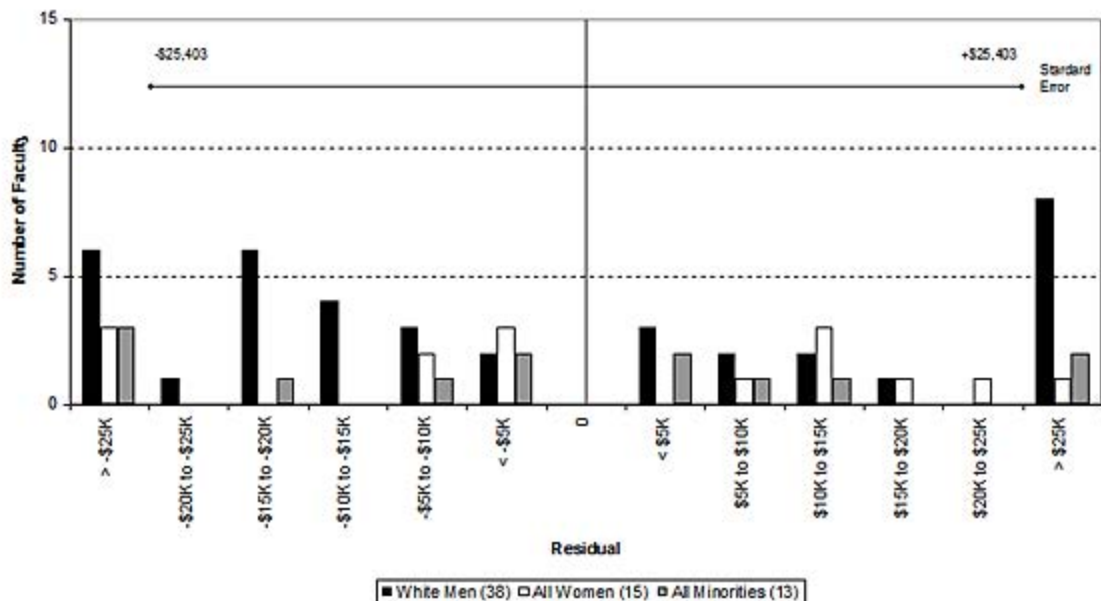
Predicted Salary: $4360101 + (\text{degree level} \times 0) - (\text{degree year} \times 1937.70) - (\text{UCI reg rank year} \times 204.26)$

University of California, Irvine
Ladder Rank Faculty Salary Residuals
School of Medicine
October 2008



Residual = Actual Salary - Predicted Salary

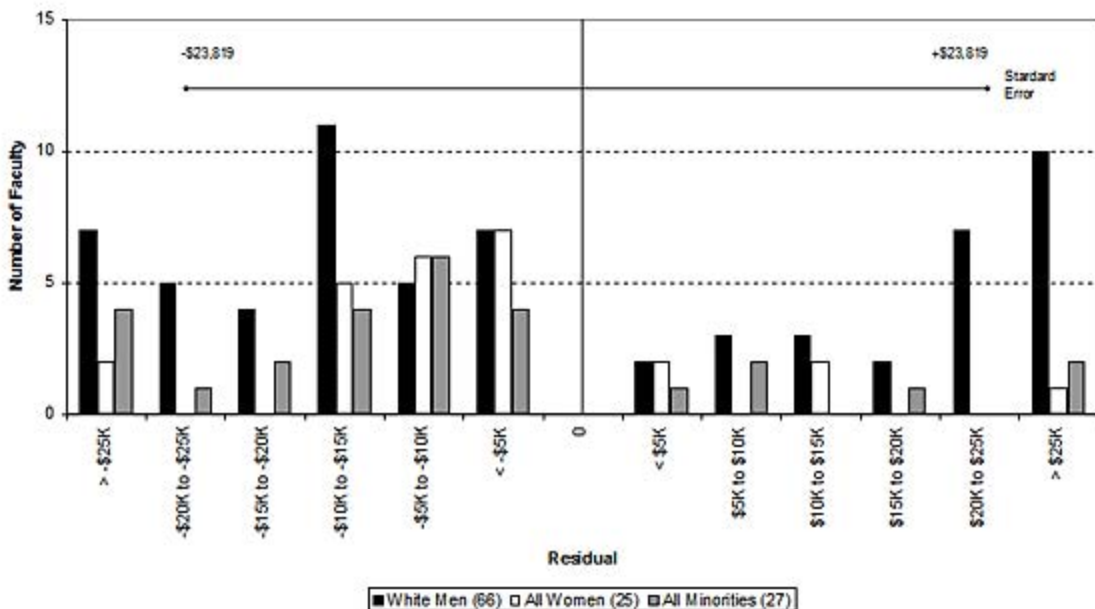
University of California, Irvine
Ladder Rank Faculty Salary Residuals
School of Medicine - Basic Sciences
October 2007



Residual = Actual Salary - Predicted Salary

Predicted Salary: $4168214 + (\text{degree indicator} * 0) - (\text{degree year} * 3795.11) + (\text{UCI reg rank year} * 1743.481)$

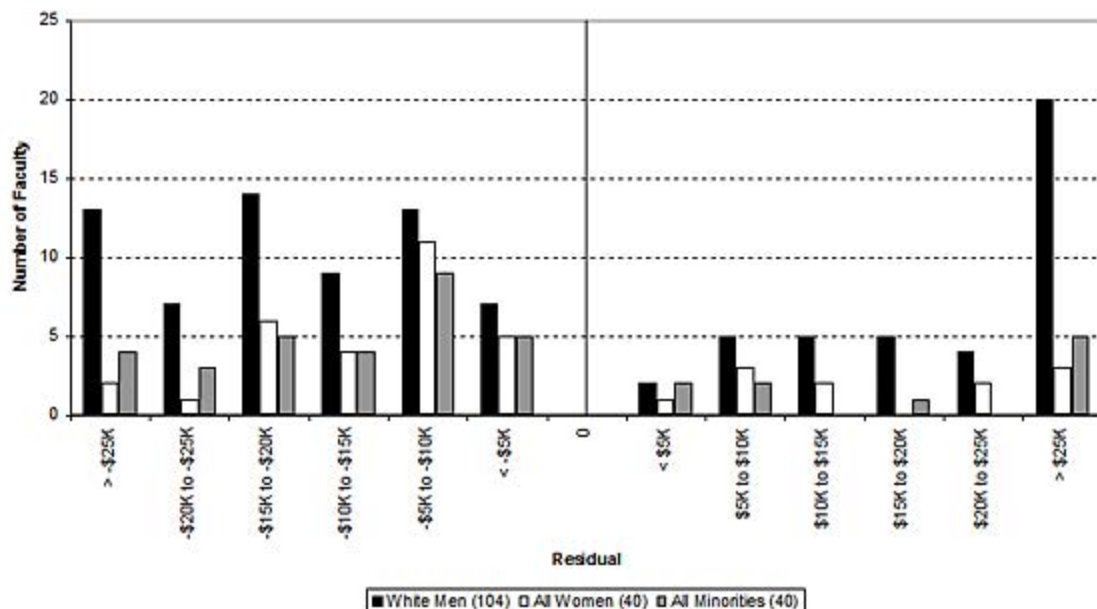
University of California, Irvine
Ladder Rank Faculty Salary Residuals
School of Medicine - Clinical Sciences
October 2007



Residual = Actual Salary - Predicted Salary

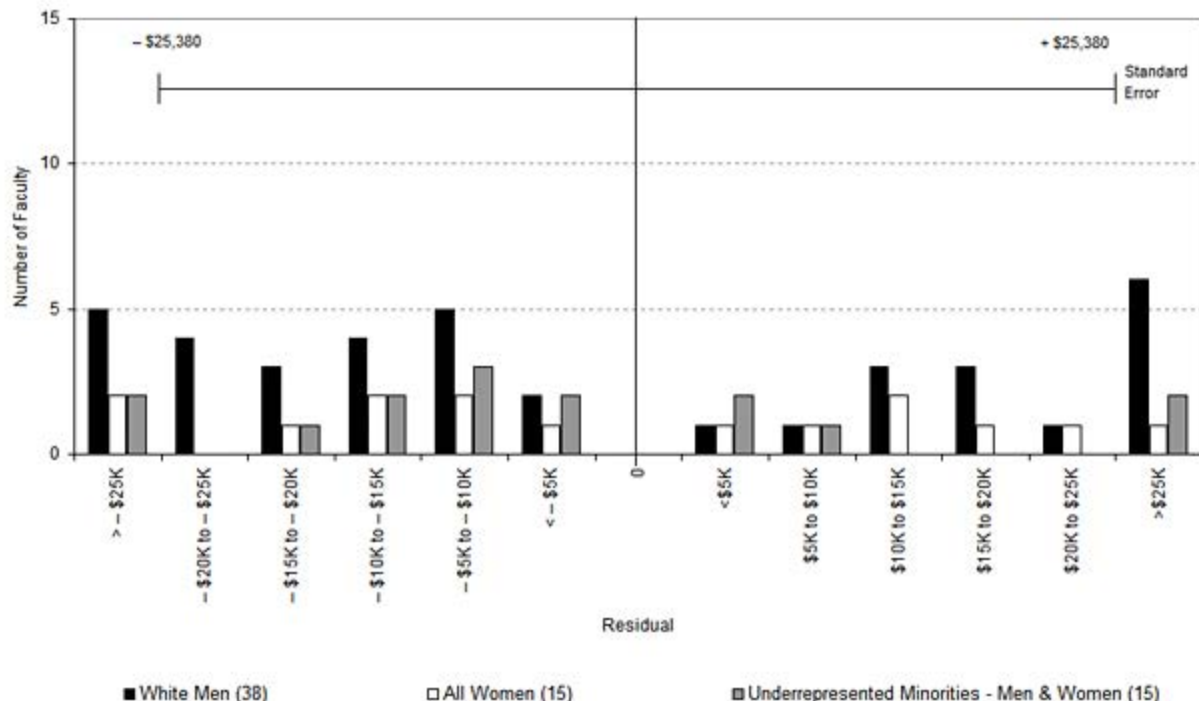
Predicted Salary: $4431318 + (\text{degree indicator} * 0) - (\text{degree year} * 1789.81) - (\text{UCI reg rank year} * 388.383)$

University of California, Irvine
Ladder Rank Faculty Salary Residuals
School of Medicine
October 2007



Residual = Actual Salary - Predicted Salary

University of California, Irvine
Ladder Rank Faculty Salary Residuals
School of Medicine - Basic Sciences
October 2006

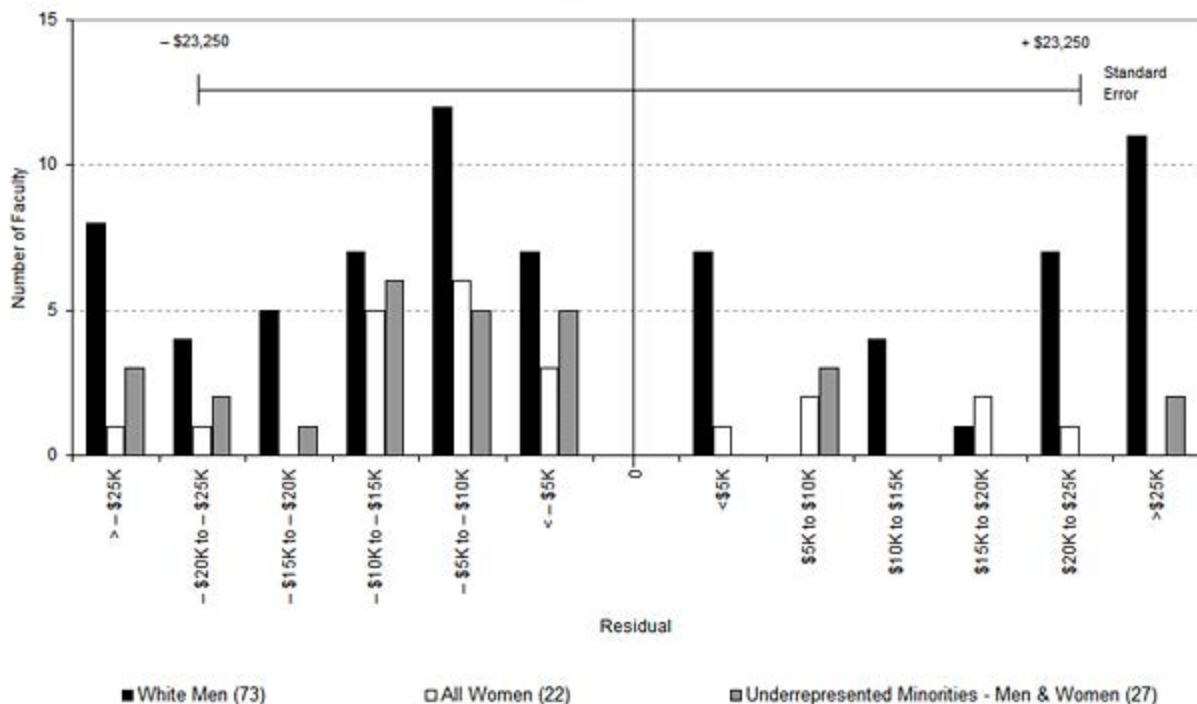


Residual = Actual Salary - Predicted Salary

Predicted Salary: $3792095.26 + (\text{degree indicator} * 0) - (\text{degree year} * 3122.813396) + (\text{UCI reg ranks year} * 1258.45787)$

Sources: Payroll/Personnel System Extract as of 10/31/2006, Academic Personnel, Pay Equity Study

University of California, Irvine
Ladder Rank Faculty Salary Residuals
School of Medicine - Clinical Sciences
October 2006

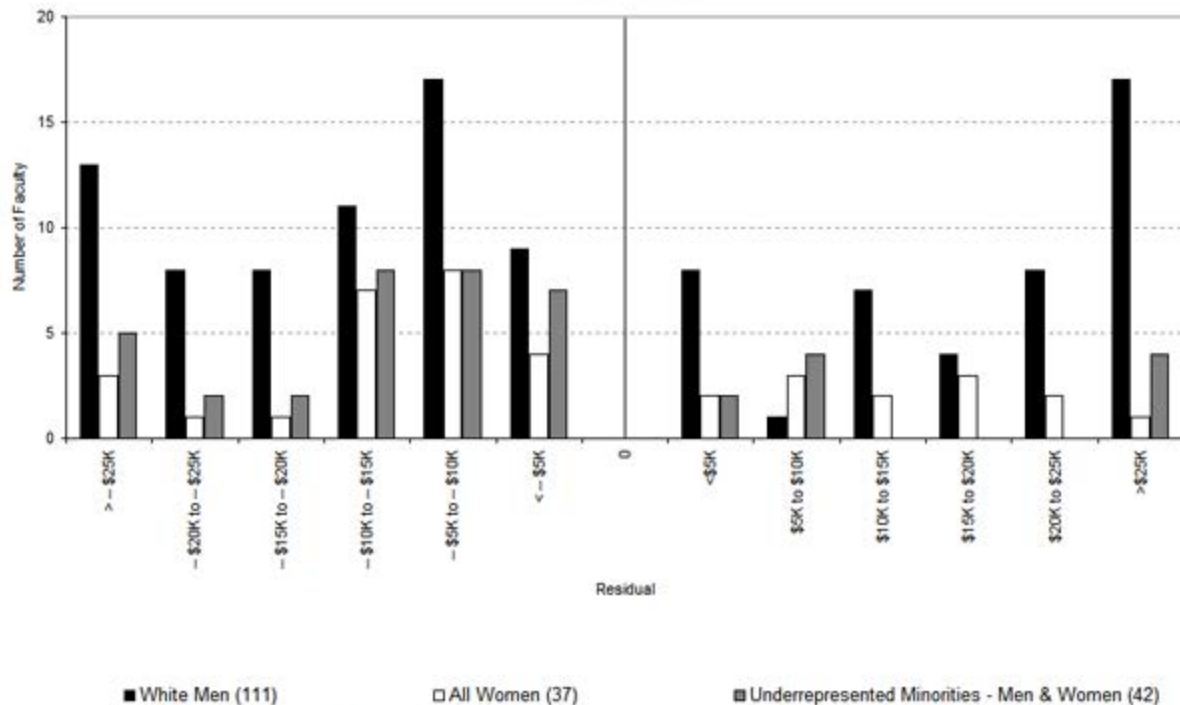


Residual = Actual Salary - Predicted Salary

Predicted Salary: $4403256 + (\text{degree indicator} * 0) - (\text{degree year} * 1791.72) - (\text{UCI reg ranks year} * 378.021)$

Sources: Payroll/Personnel System Extract as of 10/31/2006, Academic Personnel, Pay Equity Study

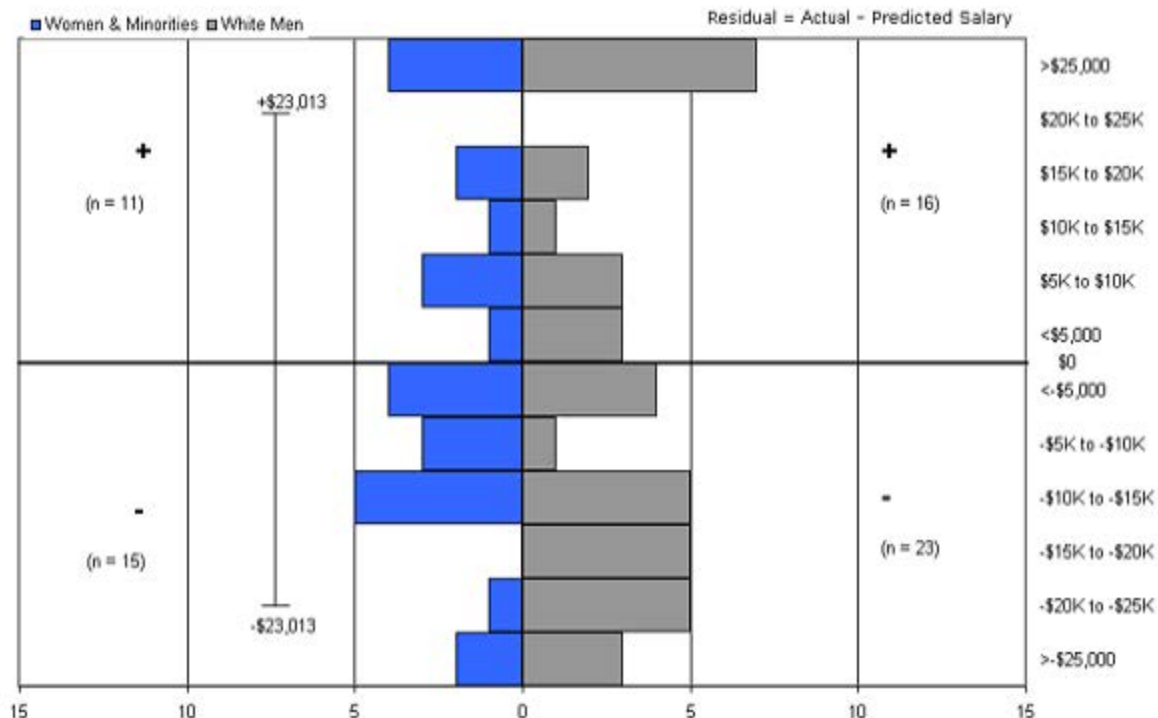
University of California, Irvine
Ladder Rank Faculty Salary Residuals
School of Medicine
October 2006



Residual = Actual Salary - Predicted Salary

Sources: Payroll/Personnel System Extract as of 10/31/2006, Academic Personnel, Pay Equity Study

Ladder Ranks Faculty Salary Residuals
School of Medicine: Basic Sciences
 October 2005

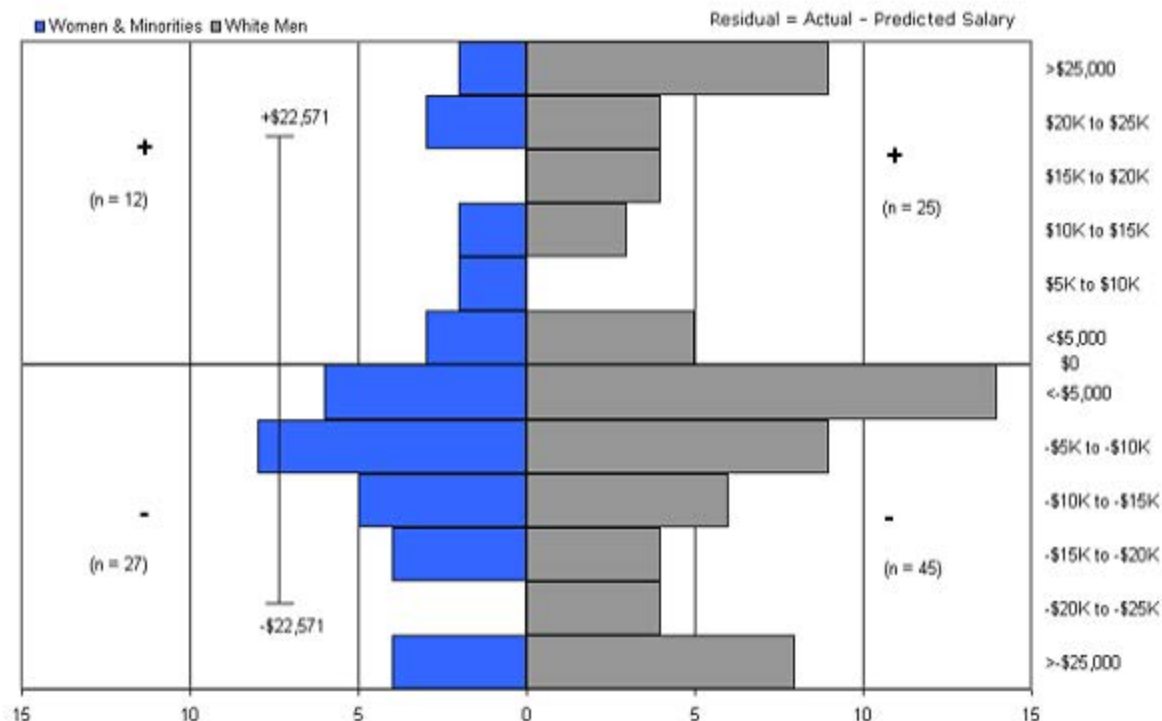


Predicted salary = $\$3,855,735 + (\$1,376 * (\text{year of hire})) - (\$3,275 * (\text{degree year}))$

Standard error = \$23,013

Sources: Payroll/Personnel System Extract as of 10/31/2005, Academic Personnel, Pay Equity Study

Ladder Ranks Faculty Salary Residuals
School of Medicine: Clinical Sciences
 October 2005

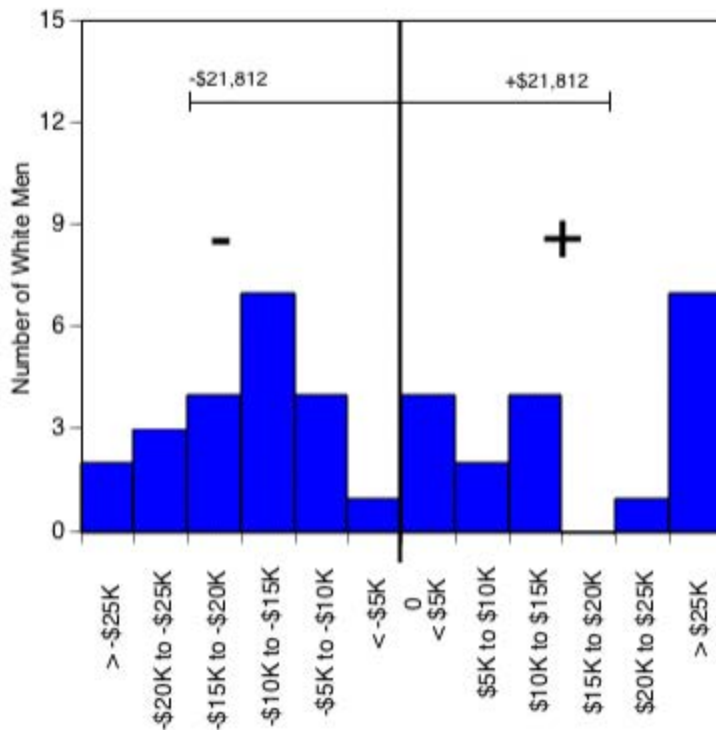


Predicted salary = $\$4,415,176 - (\$569 * (\text{year of hire})) - (\$1,608 * (\text{degree year}))$

Standard error = \$22,571

Sources: Payroll/Personnel System Extract as of 10/31/2005, Academic Personnel, Pay Equity Study

University of California, Irvine
 Ladder Rank Faculty Salary Residuals--Revised Model
School of Medicine Basic Sciences: White Men
 October 2004



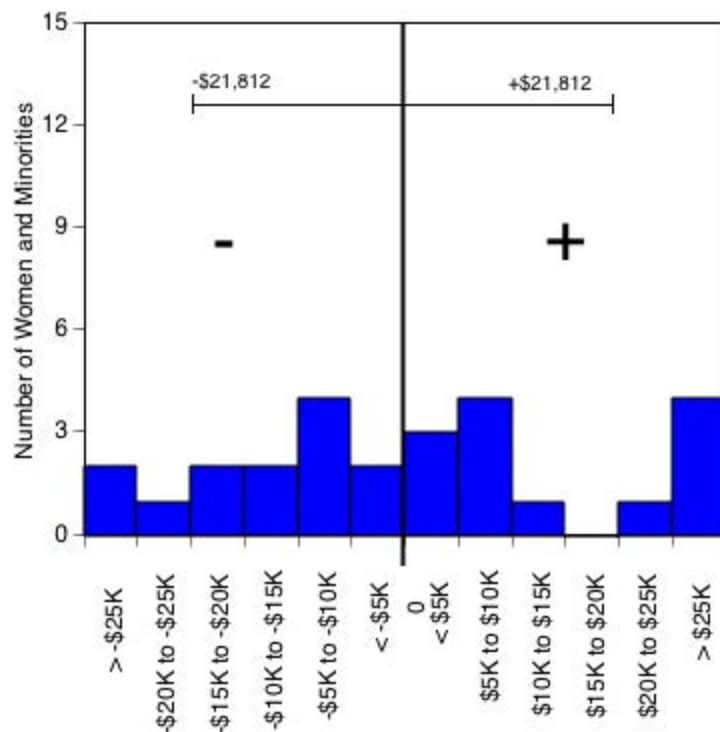
Residual = actual salary - predicted salary

Predicted salary = $\$3,700,549 + (\$1,348 \cdot (\text{year of hire})) + (-\$3,171 \cdot (\text{degree year}))$

Standard error = \$21,812

Sources: Payroll/Personnel System Extract as of 10-31-2004, Academic Personnel,
 Pay Equity Study.

University of California, Irvine
 Ladder Rank Faculty Salary Residuals--Revised Model
School of Medicine Basic Sciences: Women and Minorities
 October 2004



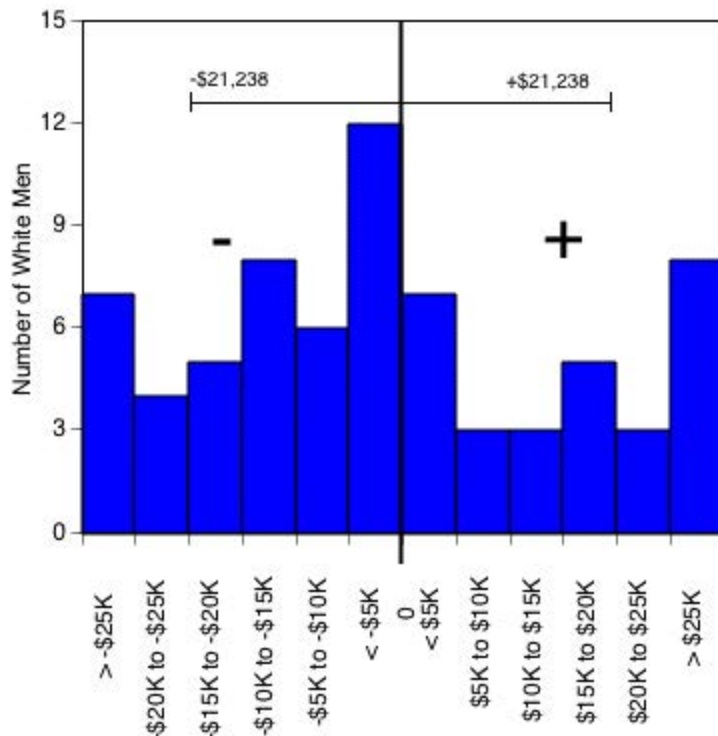
Residual = actual salary - predicted salary

Predicted salary = \$3,700,549 + (\$1,348 * (year of hire)) + (-\$3,171 * (degree year))

Standard error = \$21,812

Sources: Payroll/Personnel System Extract as of 10-31-2004, Academic Personnel,
 Pay Equity Study.

University of California, Irvine
 Ladder Rank Faculty Salary Residuals--Revised Model
School of Medicine Clinical Sciences: White Men
 October 2004



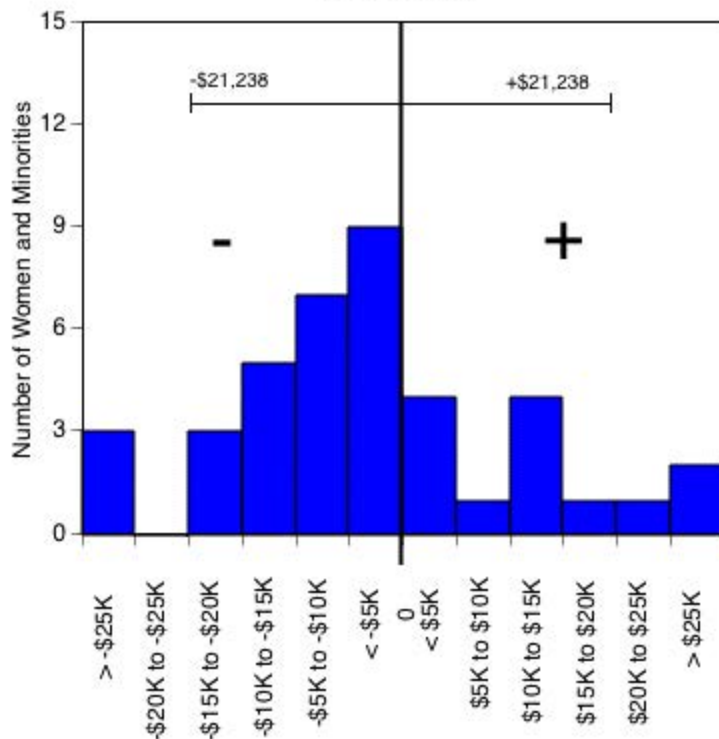
Residual = actual salary - predicted salary

Predicted salary = \$4,484,415 + (-\$589 * (year of hire)) + (-\$1,625 * (degree year))

Standard error = \$21,238

Sources: Payroll/Personnel System Extract as of 10-31-2004, Academic Personnel,
 Pay Equity Study.

University of California, Irvine
 Ladder Rank Faculty Salary Residuals--Revised Model
School of Medicine Clinical Sciences: Women and Minorities
 October 2004



Residual = actual salary - predicted salary

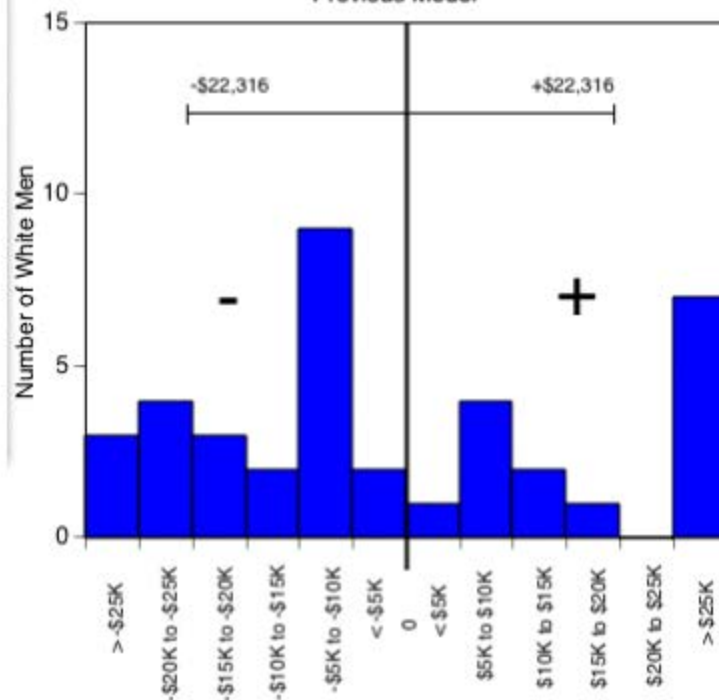
Predicted salary = $\$4,484,415 + (-\$589 \cdot (\text{year of hire})) + (-\$1,625 \cdot (\text{degree year}))$

Standard error = \$21,238

Sources: Payroll/Personnel System Extract as of 10-31-2004, Academic Personnel,
 Pay Equity Study.

University of California, Irvine
Ladder Rank Faculty Salary Residuals
Basic Sciences: White Men
October 2003

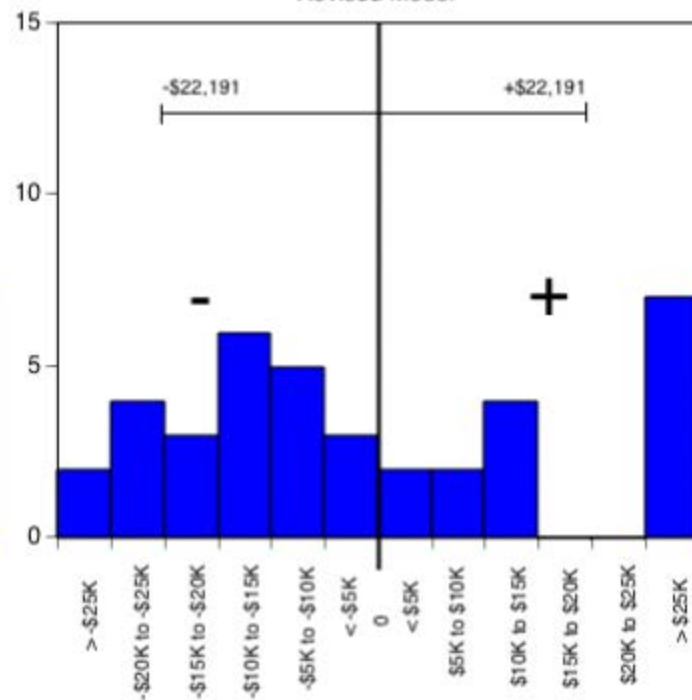
Previous Model



Predicted salary = \$3,895,698 + (\$1,324 * (year of hire)) +
(-\$1,622 * (degree year)) + (-\$1,647 * year of birth)

Standard error = \$22,316

Revised Model



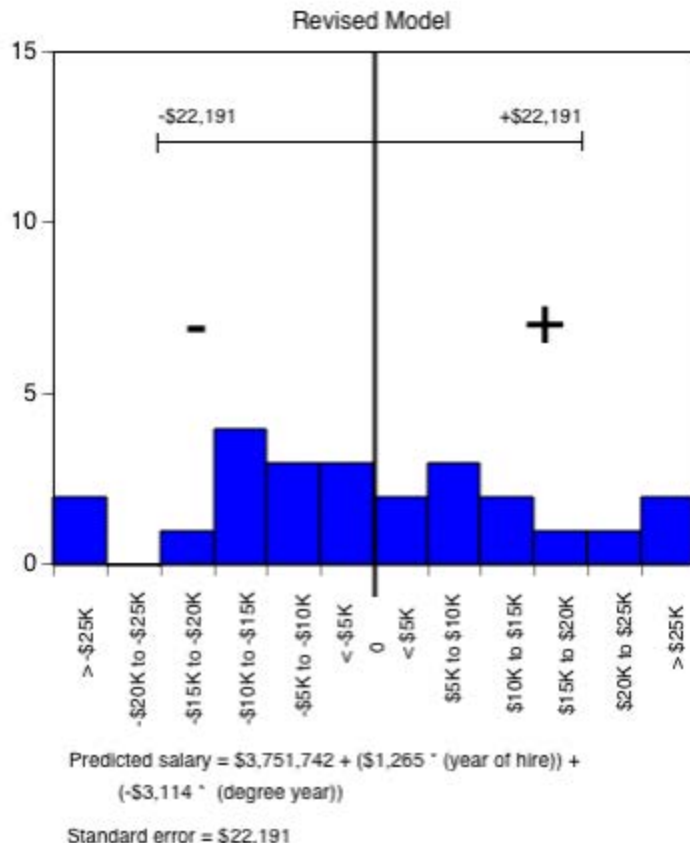
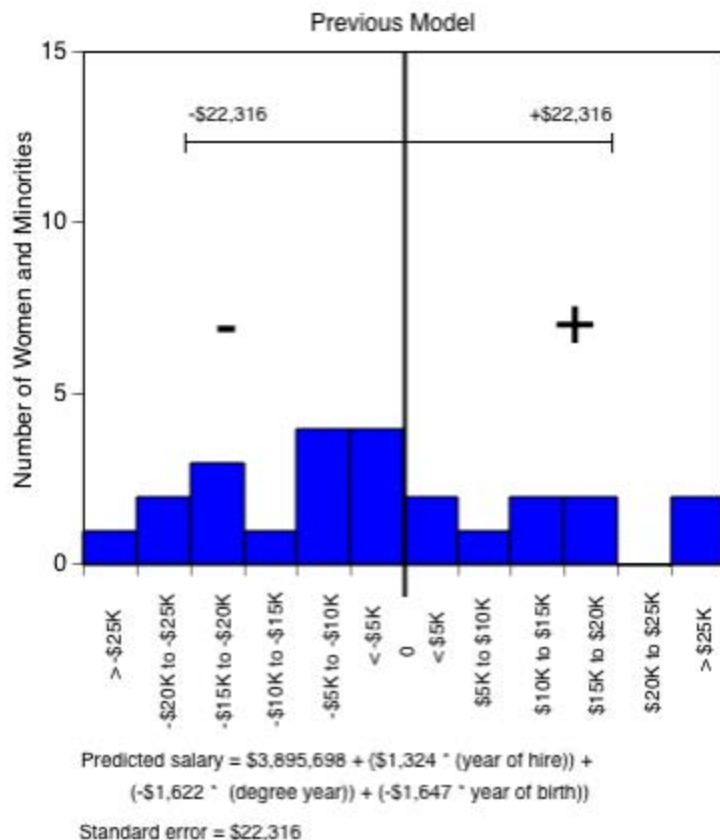
Predicted salary = \$3,751,742 + (\$1,265 * (year of hire)) +
(-\$3,114 * (degree year))

Standard error = \$22,191

Residual = actual salary - predicted salary

Sources: Payroll/Personnel System Extract as of 10-31-2003, Academic Personnel, Pay Equity Study.

University of California, Irvine
 Ladder Rank Faculty Salary Residuals
Basic Sciences: Women and Minorities
 October 2003

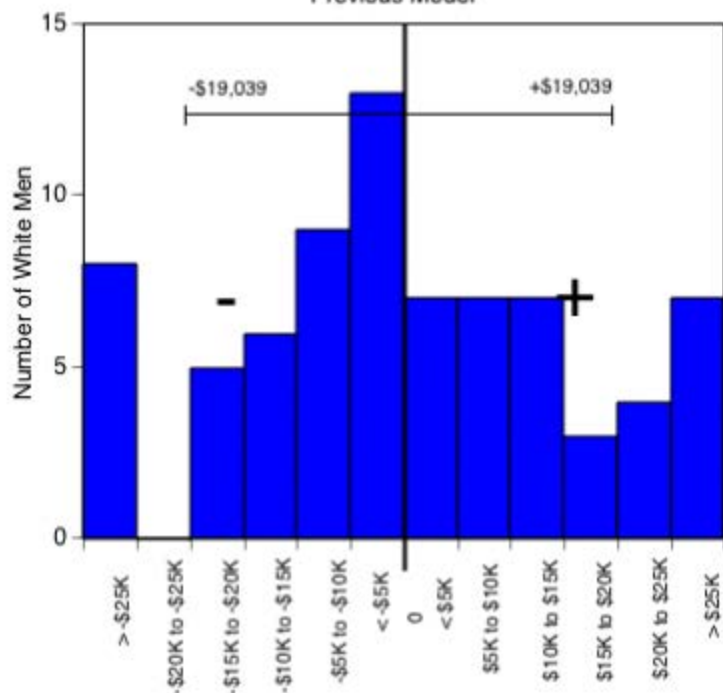


Residual = actual salary - predicted salary

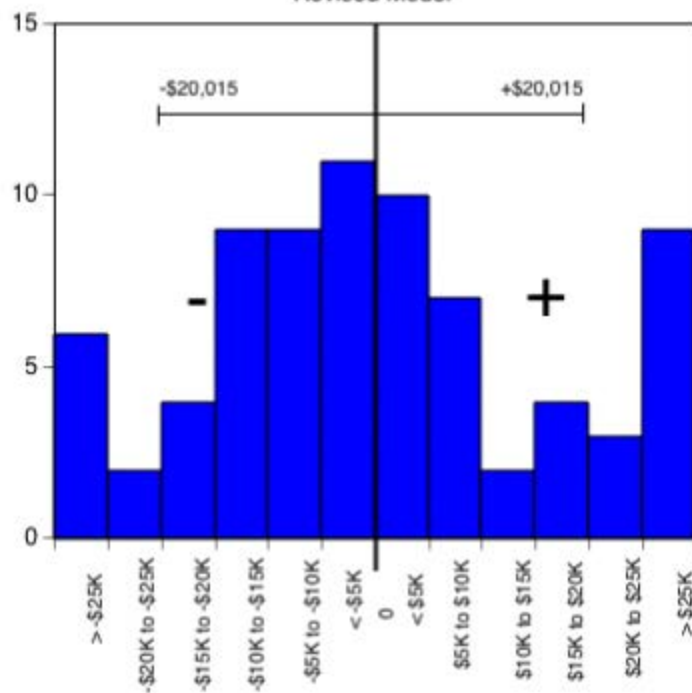
Sources: Payroll/Personnel System Extract as of 10-31-2003, Academic Personnel, Pay Equity Study.

University of California, Irvine
Ladder Rank Faculty Salary Residuals
Clinical Sciences: White Men
October 2003

Previous Model



Revised Model



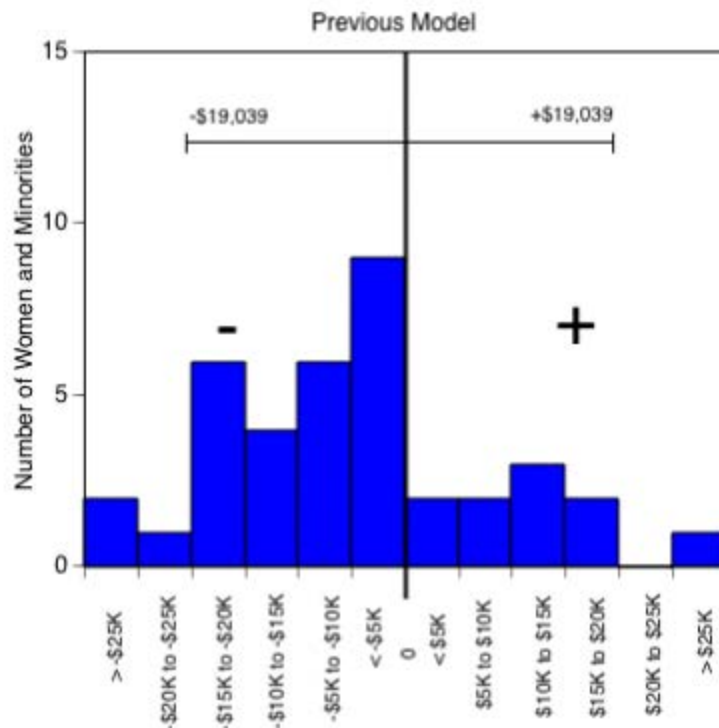
Predicted salary = \$5,294,478 + (-\$289 * (year of hire)) +
(\$483 * (degree year)) + (-\$2,861 * year of birth)

Predicted salary = \$4,642,923 + (-\$472 * (year of hire)) +
(-\$1,825 * (degree year))

Residual = actual salary - predicted salary

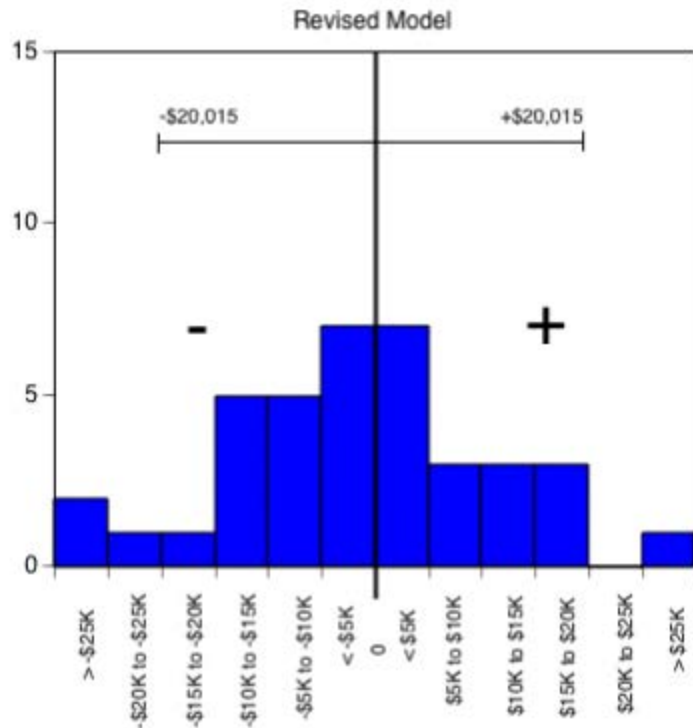
Sources: Payroll/Personnel System Extract as of 10-31-2003, Academic Personnel, Pay Equity Study.

University of California, Irvine
 Ladder Rank Faculty Salary Residuals
Clinical Sciences: Women and Minorities
 October 2003



Predicted salary = \$5,294,478 + (-\$289 * (year of hire)) +
 (\$483 * (degree year)) + (-\$2,861 * year of birth))

Standard error = \$19,039



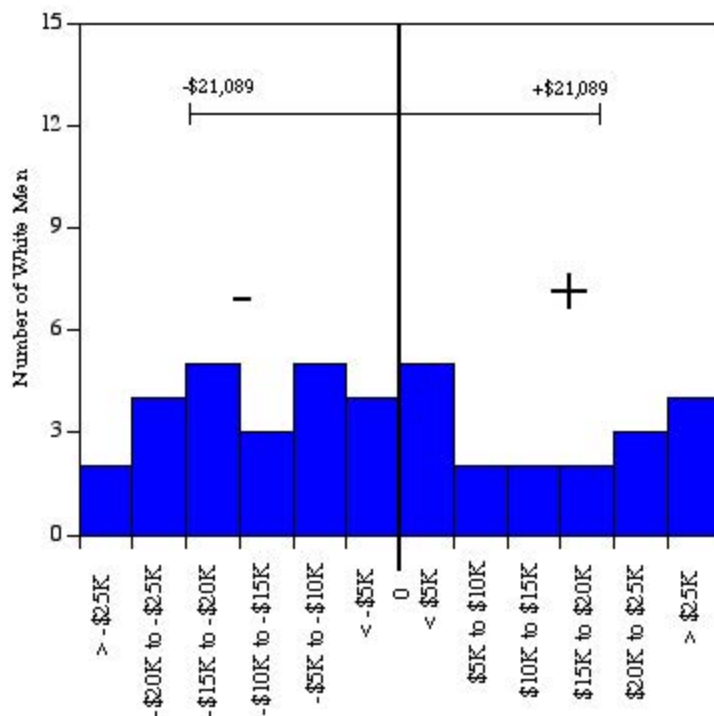
Predicted salary = \$4,642,923 + (-\$472 * (year of hire)) +
 (-\$1,825 * (degree year))

Standard error = \$20,015

Residual = actual salary - predicted salary

Sources: Payroll/Personnel System Extract as of 10-31-2003, Academic Personnel, Pay Equity Study.

University of California, Irvine
 Ladder Rank Faculty Salary Residuals
College of Medicine Basic Sciences: White Men
 October 2002



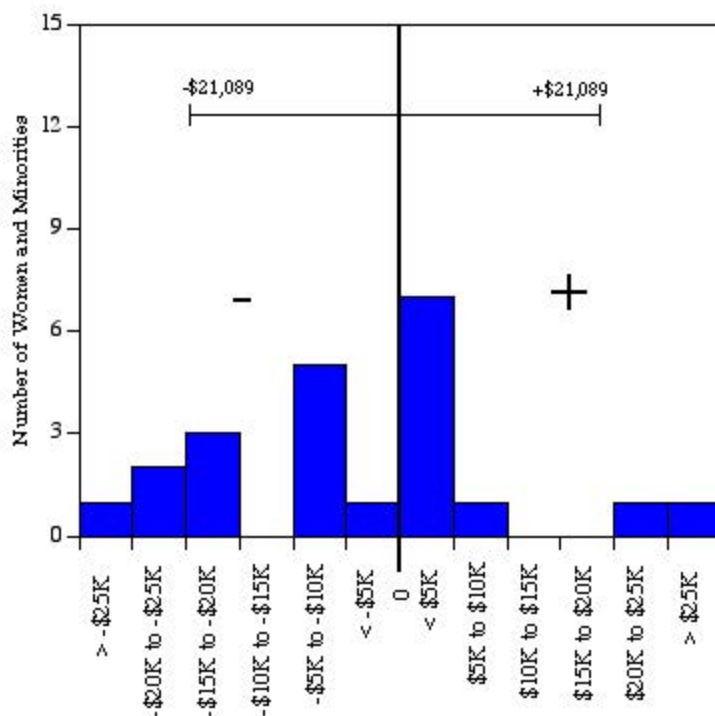
Residual = actual salary - predicted salary; base salary only

Predicted salary = \$4,107,378 + (\$1,381 * (year of hire)) + (-\$1,784 * (degree year)) +
 (-\$1,650 * (year of birth))

Standard error = \$21,089

Sources: Payroll/Personnel System Extract as of 10-31-2002, Academic Personnel, Pay Equity Study.

University of California, Irvine
 Ladder Rank Faculty Salary Residuals
College of Medicine Basic Sciences Women and Minorities
 October 2002



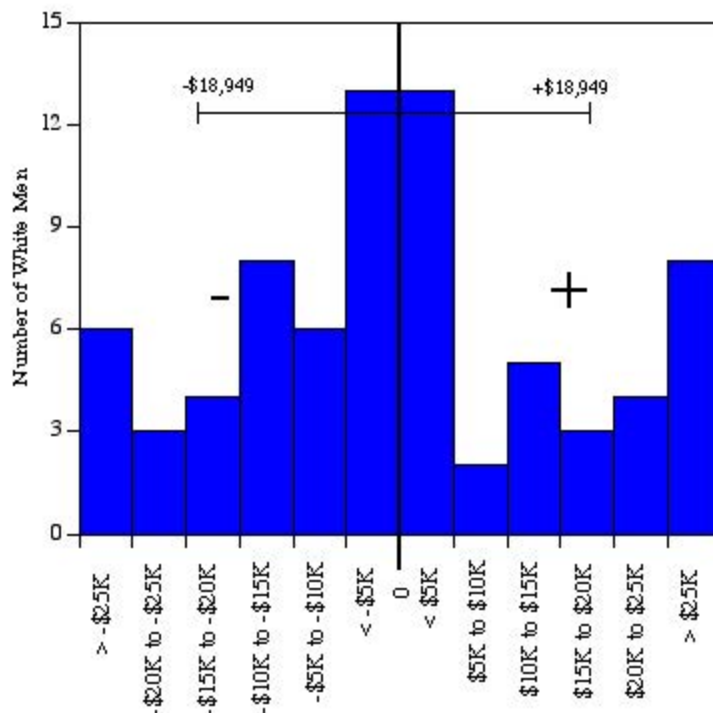
Residual = actual salary - predicted salary; base salary only

Predicted salary = \$4,107,378 + (\$1,381 * (year of hire)) + (-\$1,784 * (degree year)) +
 (-\$1,650 * (year of birth))

Standard error = \$21,089

Sources: Payroll/Personnel System Extract as of 10-31-2002, Academic Personnel, Pay Equity Study.

University of California, Irvine
 Ladder Rank Faculty Salary Residuals
College of Medicine Clinical Sciences: White Men
 October 2002



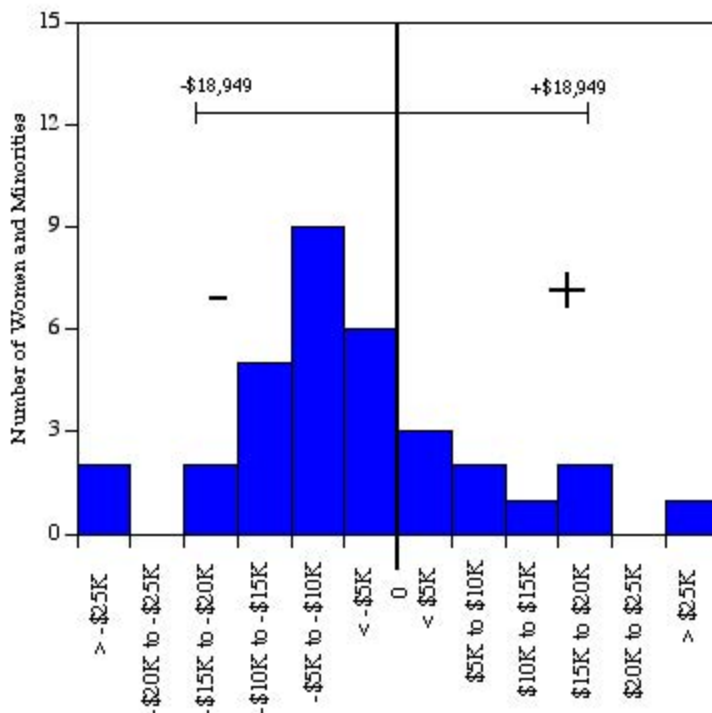
Residual = actual salary - predicted salary; base salary only

Predicted salary = \$4,477,496 + (-\$391 * (year of hire)) + (-\$386 * (degree year)) +
 (-\$1,458 * (year of birth))

Standard error = \$18,949

Sources: Payroll/Personnel System Extract as of 10-31-2002, Academic Personnel, Pay Equity Study.

University of California, Irvine
Ladder Rank Faculty Salary Residuals
College of Medicine Clinical Sciences: Women and Minorities
October 2002



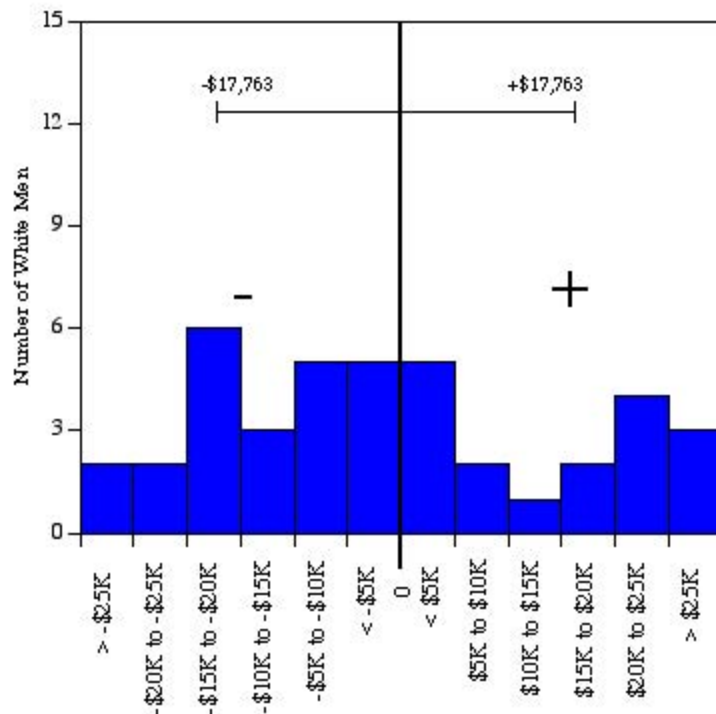
Residual = actual salary - predicted salary; base salary only

Predicted salary = $\$4,477,496 + (-\$391 * (\text{year of hire})) + (-\$386 * (\text{degree year})) + (-\$1,458 * (\text{year of birth}))$

Standard error = \$18,949

Sources: Payroll/Personnel System Extract as of 10-31-2002, Academic Personnel, Pay Equity Study.

University of California, Irvine
 Ladder Rank Faculty Salary Residuals
College of Medicine Basic Sciences White Men
 October 2001



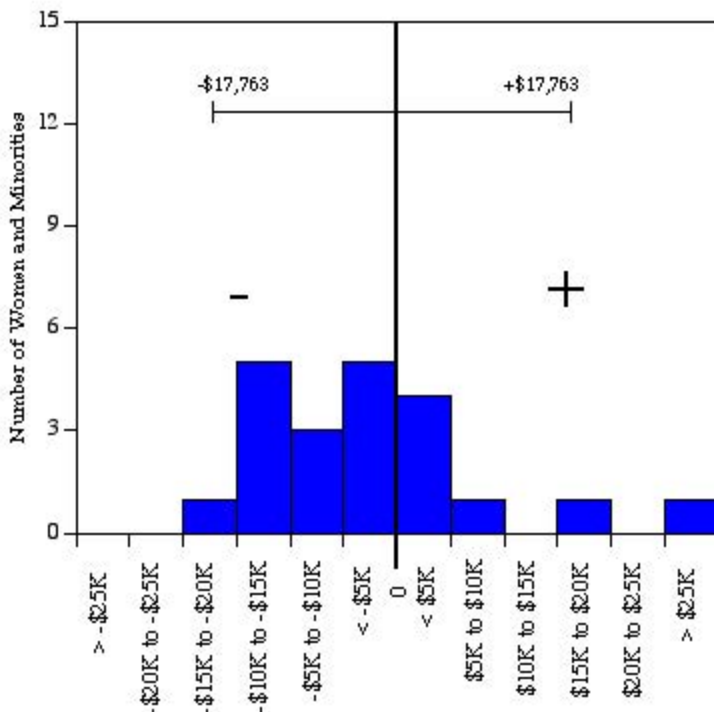
Residual = actual salary - predicted salary; base salary only.

Predicted salary = $\$43.15 * 10^5 + (\$481 * (\text{year of hire})) + (-\$1,882 * (\text{degree year})) + (-\$742 * (\text{year of birth}))$

Standard error = \$17,763

Sources: Payroll/Personnel System Extract as of 10-31-2001, Academic Personnel.

University of California, Irvine
 Ladder Rank Faculty Salary Residuals
College of Medicine Basic Sciences Women and Minorities
 October 2001



Residual = actual salary - predicted salary; base salary only.

Predicted salary = $\$43.15 * 10^5 + (\$481 * (\text{year of hire})) + (-\$1,882 * (\text{degree year})) + (-\$742 * (\text{year of birth}))$

Standard error = \$17,763

Sources: Payroll/Personnel System Extract as of 10-31-2001, Academic Personnel.