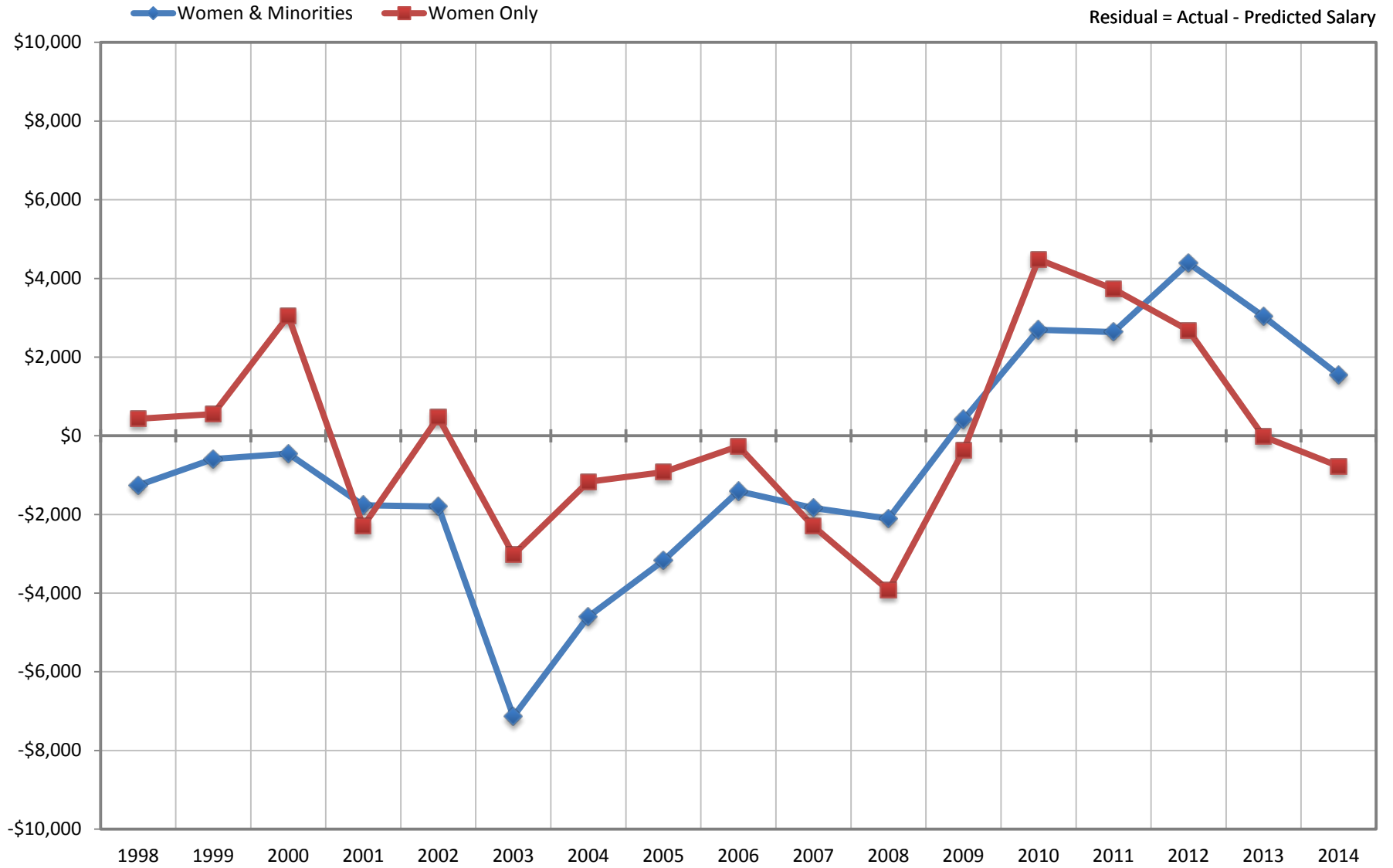


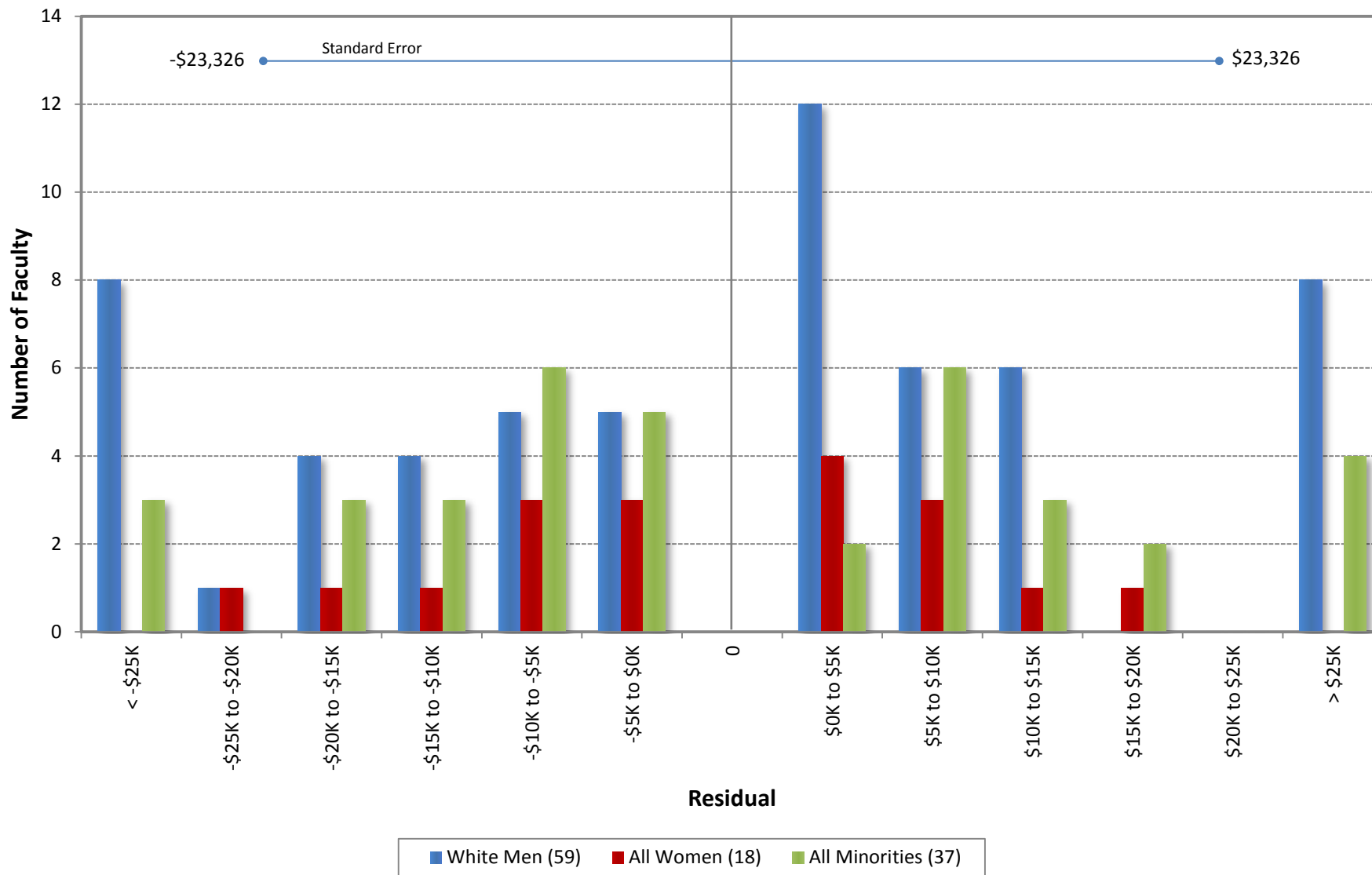
Ladder Ranks Faculty Salary Mean Residuals: Women and Minorities
The Henry Samueli School of Engineering
October 1998 through 2014



UC Irvine Office of Academic Personnel

Sources: Payroll/Personnel Extracts as of October 1998 through 2014, Academic Personnel, Pay Equity Study.

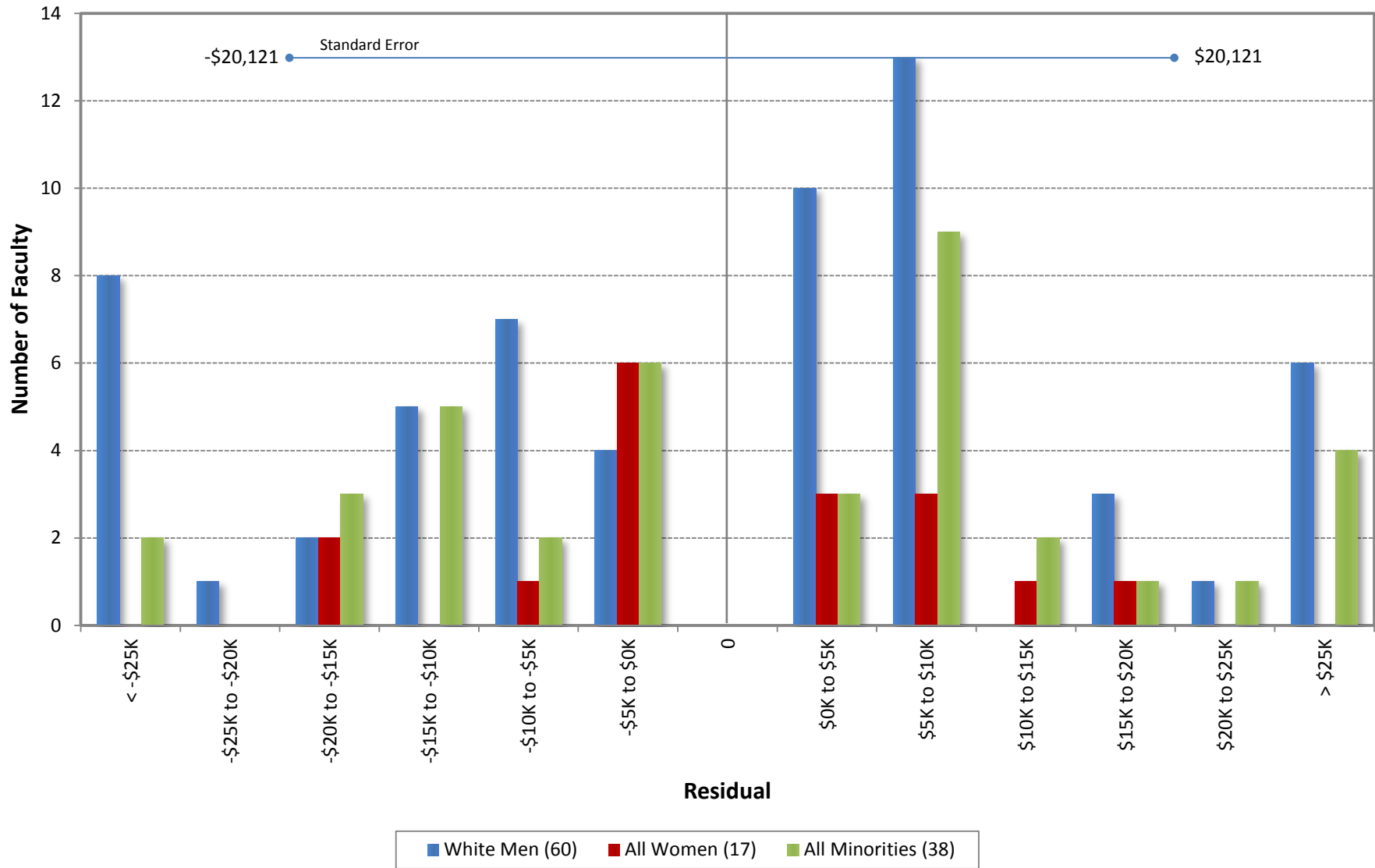
University of California, Irvine
 Ladder Rank Faculty Salary Residuals
The Henry Samueli School of Engineering
 October 2014



Residual = Actual Salary - Predicted Salary

Predicted Salary = $5163550.38487143 + (\text{DegreeLevel} * 0) + (\text{DegreeYear} * -3136.52675579974) + (\text{RegRankYr} * 609.980340451108)$

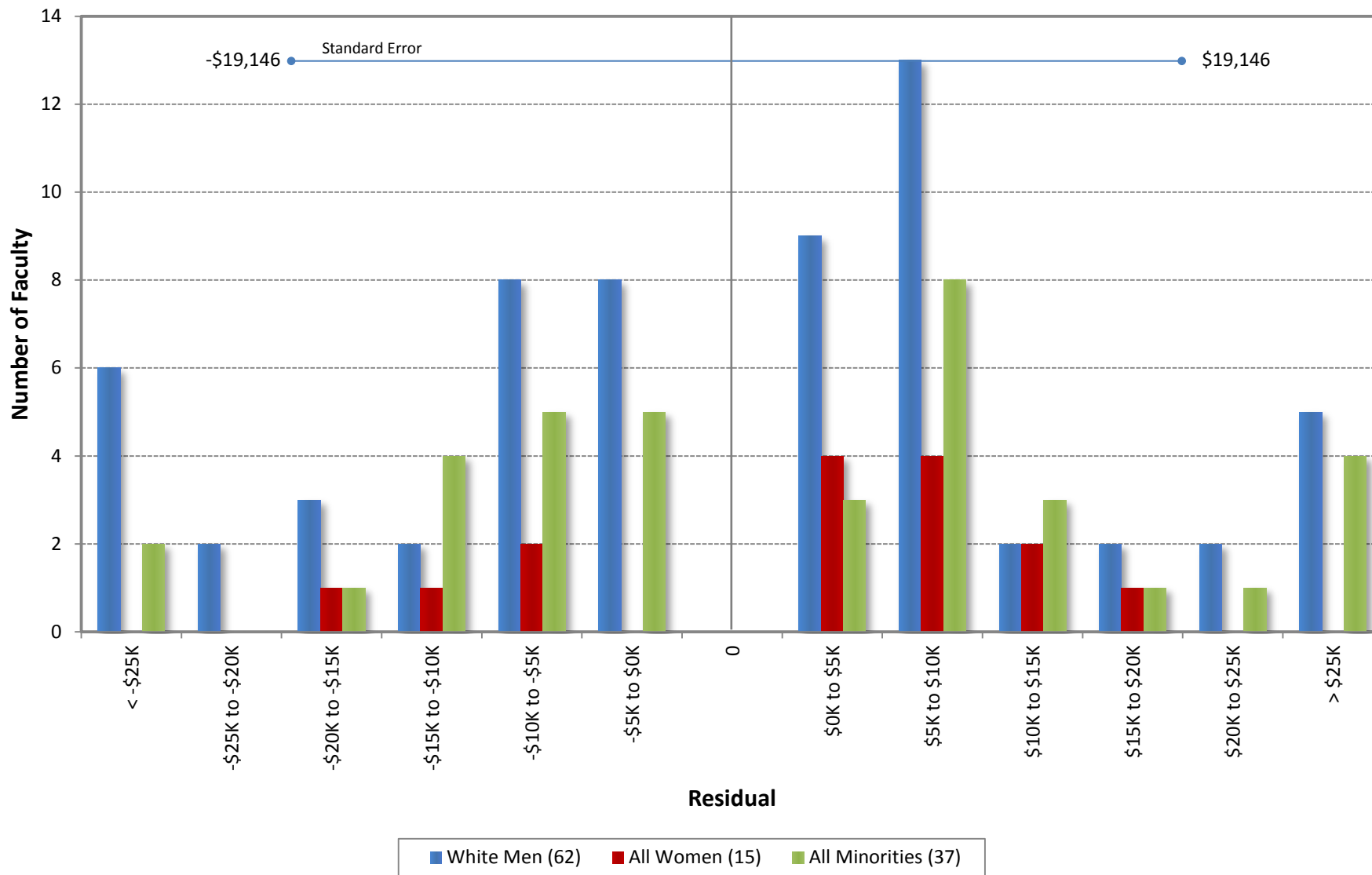
University of California, Irvine
 Ladder Rank Faculty Salary Residuals
The Henry Samueli School of Engineering
 October 2013



Residual = Actual Salary - Predicted Salary

Predicted Salary = $4423998.80903734 + (\text{DegreeLevel} * 0) + (\text{DegreeYear} * -2955.47208619378) + (\text{RegRankYr} * 795.245618703569)$

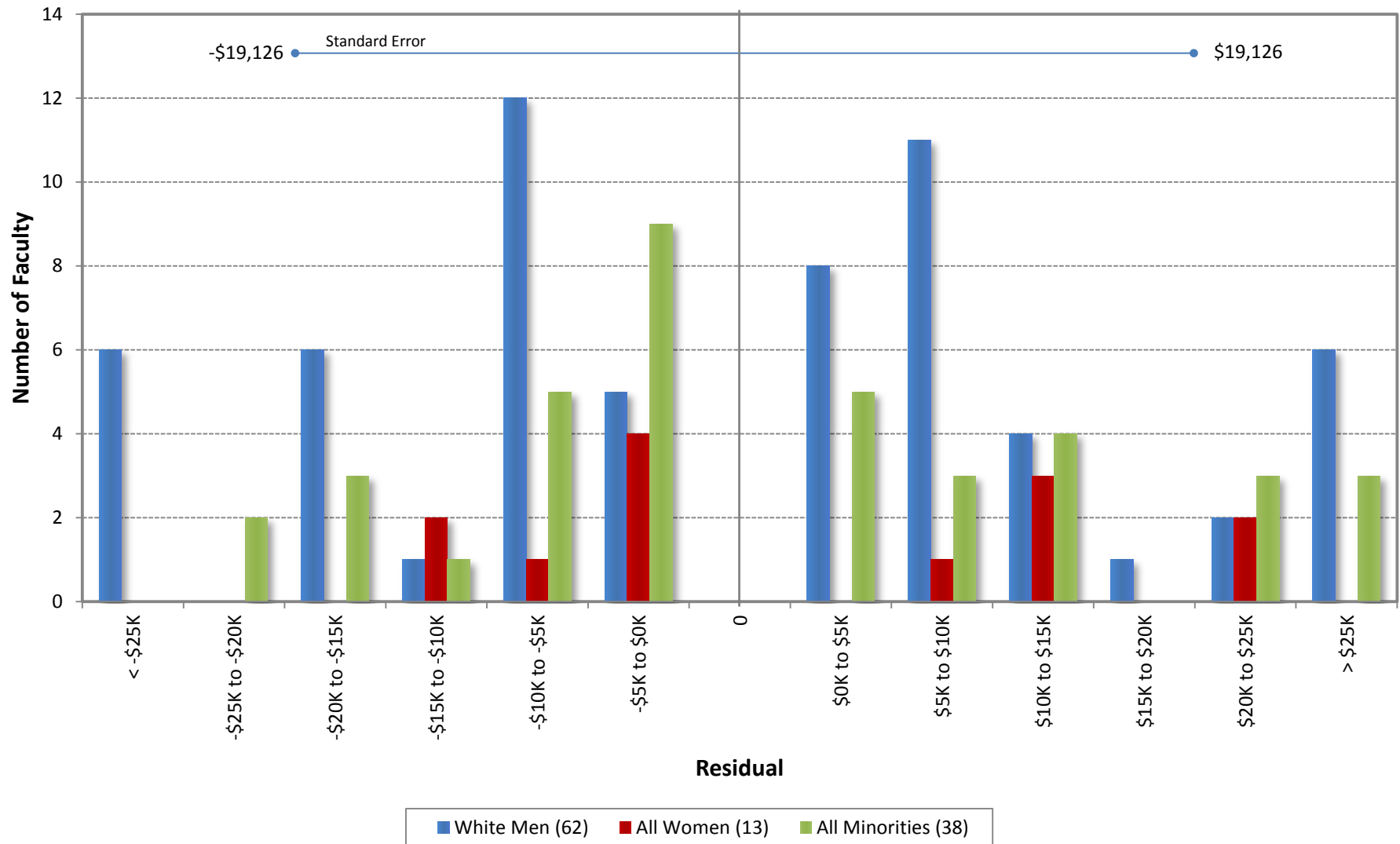
University of California, Irvine
 Ladder Rank Faculty Salary Residuals
The Henry Samueli School of Engineering
 October 2012



Residual = Actual Salary - Predicted Salary

Predicted Salary = $4780583.15018364 + (\text{DegreeLevel} * 0) - (\text{DegreeYear} * 2992.93261889919) + (\text{RegRankYr} * 651.930444350289)$

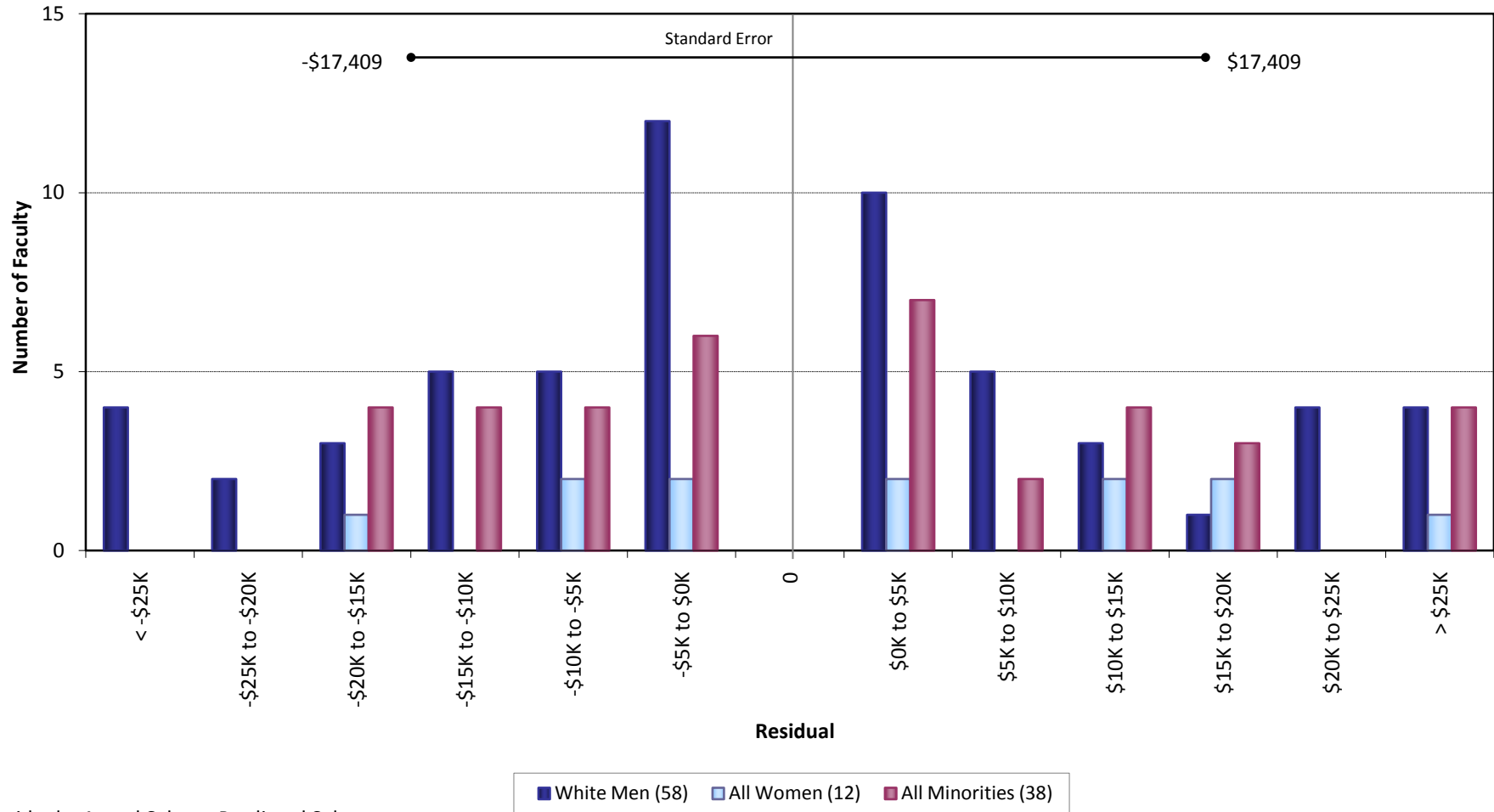
University of California, Irvine
 Ladder Rank Faculty Salary Residuals
The Henry Samueli School of Engineering
 October 2011



Residual = Actual Salary - Predicted Salary

Predicted Salary = $4873566.23185574 + (\text{DegreeLevel} * 0) - (\text{DegreeYear} * 3065.94166985901) + (\text{RegRankYr} * 676.678202973752)$

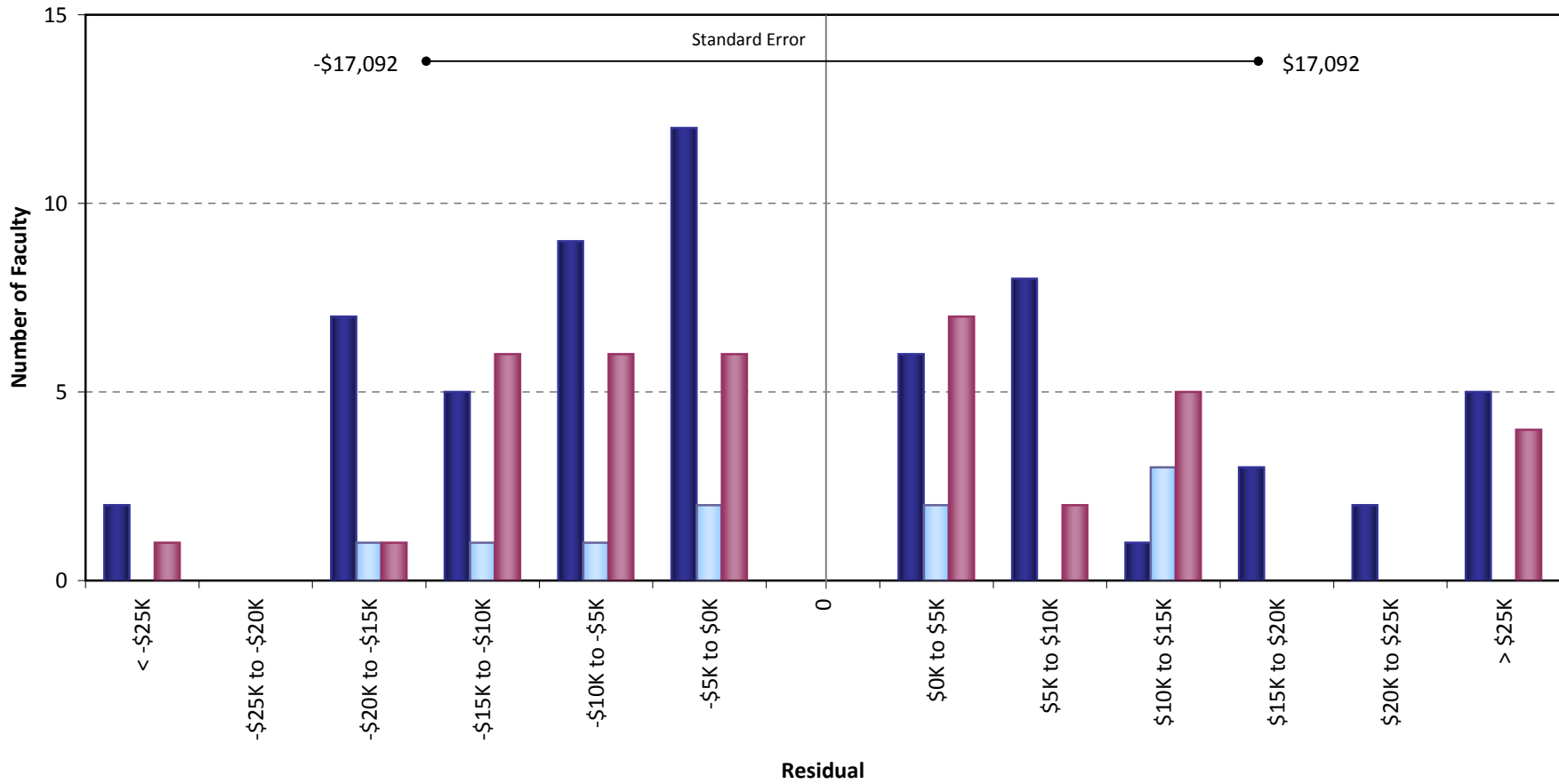
University of California, Irvine
 Ladder Rank Faculty Salary Residuals
The Henry Samueli School of Engineering
 October 2010



Residual = Actual Salary - Predicted Salary

Predicted Salary = $4628727.23236339 + (\text{DegreeLevel} * 7952.40326553211) - (\text{DegreeYear} * 3199.3368623072) + (\text{RegRankYr} * 921.033612087637)$

University of California, Irvine
 Ladder Rank Faculty Salary Residuals
The Henry Samueli School of Engineering
 October 2009

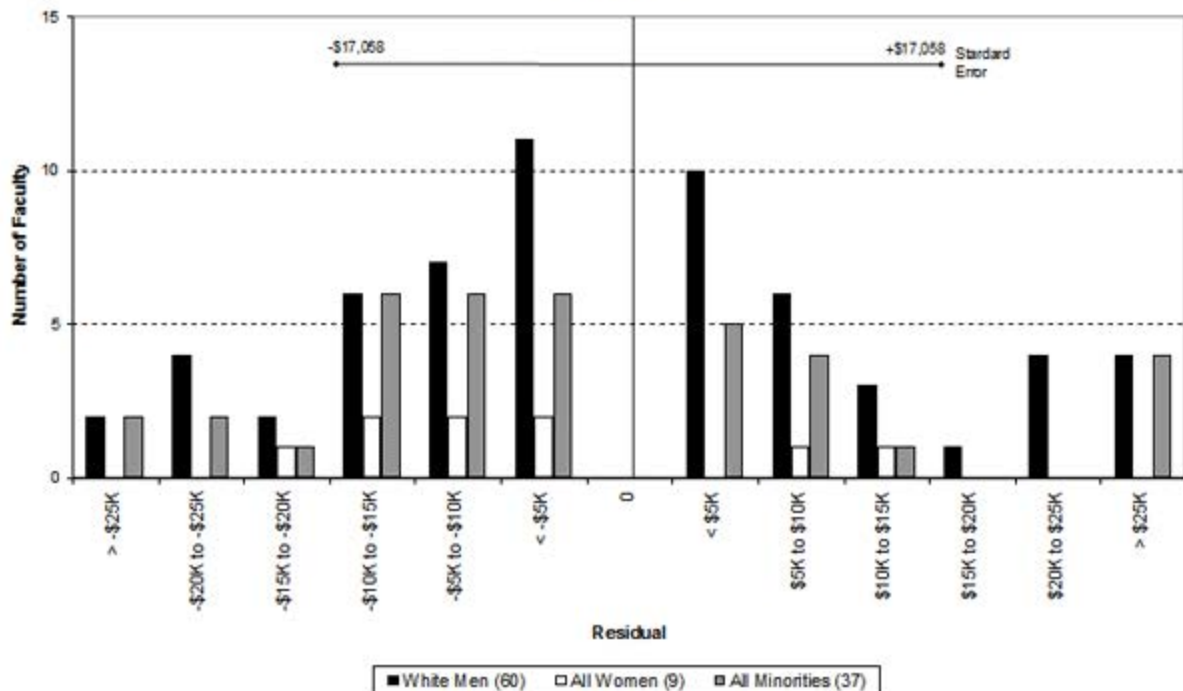


Residual = Actual Salary - Predicted Salary

■ White Men (60)
 ■ All Women (10)
 ■ All Minorities (38)

Predicted Salary = $4637976.14483756 + (\text{DegreeLevel} * 21723.3401201826) - (\text{DegreeYear} * 3105.41341574402) + (\text{RegRankYear} * 807.552449461676)$

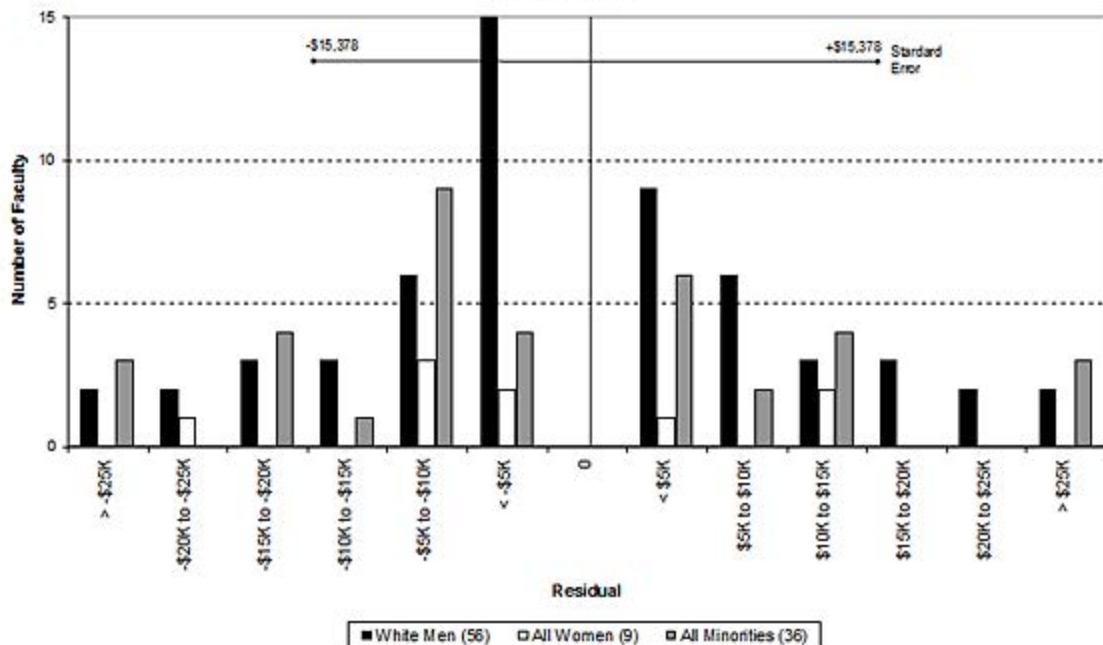
University of California, Irvine
 Ladder Rank Faculty Salary Residuals
 Henry Samueli School of Engineering
 October 2008



Residual = Actual Salary - Predicted Salary

Predicted Salary: $4710845.23 + (\text{degree level} * 22531.41) - (\text{degree year} * 2982.93) + (\text{UCI reg rank year} * 647.98)$

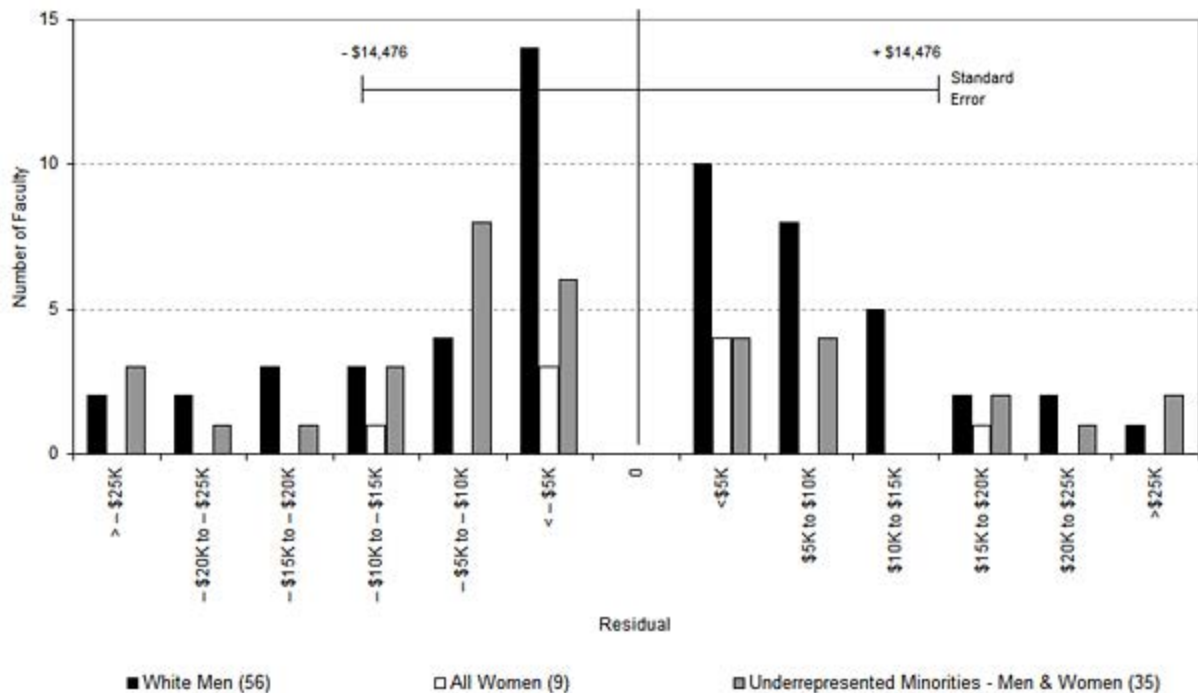
University of California, Irvine
 Ladder Rank Faculty Salary Residuals
 Henry Samueli School of Engineering
 October 2007



Residual = Actual Salary - Predicted Salary

Predicted Salary: $4352267 + (\text{degree indicator} * 20244.57) - (\text{degree year} * 2958.3) + (\text{UCI reg rank year} * 803.6176)$

University of California, Irvine
Ladder Rank Faculty Salary Residuals
Henry Samueli School of Engineering
October 2006

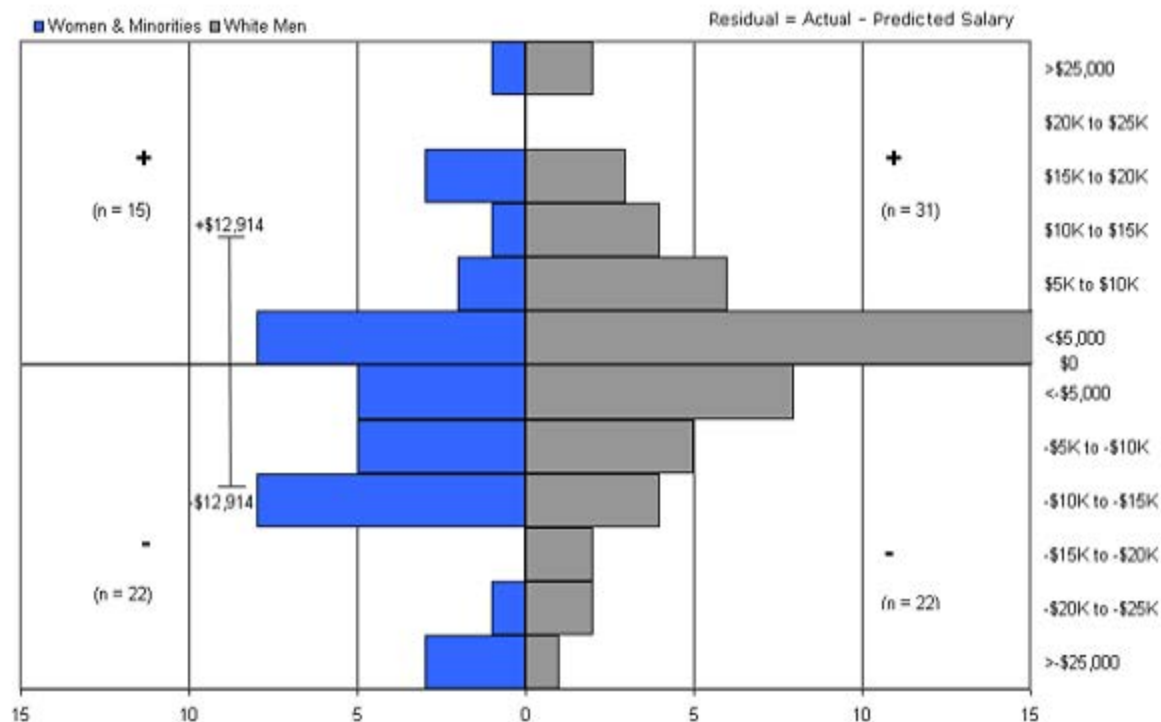


Residual = Actual Salary - Predicted Salary

Predicted Salary: $3892954 + (\text{degree indicator} * 19646.11) - (\text{degree year} * 2948.64) + (\text{UCI reg ranks year} * 1020.67)$

Sources: Payroll/Personnel System Extract as of 10/31/2006, Academic Personnel, Pay Equity Study

Ladder Ranks Faculty Salary Residuals
The Henry Samueli School of Engineering
 October 2005

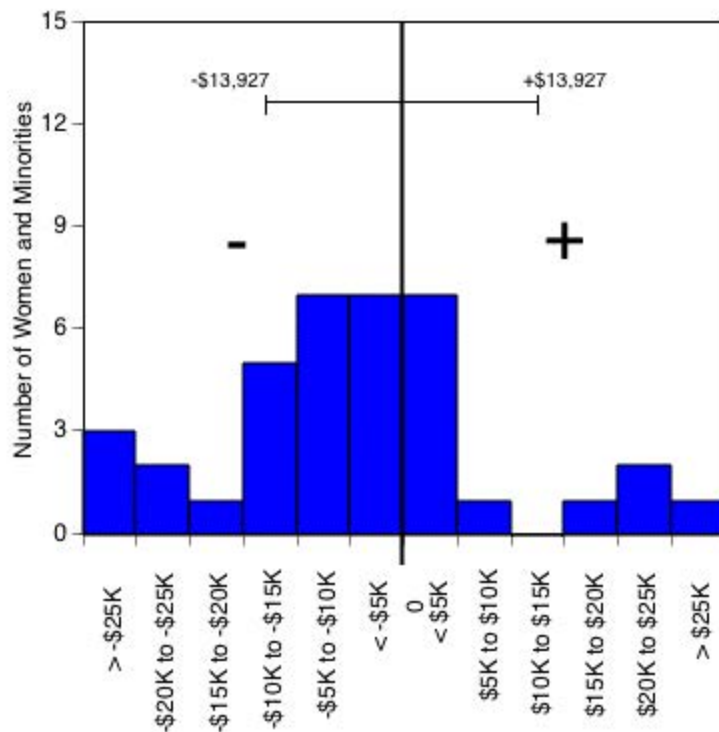


Predicted salary = \$ 3,648,146 + (\$1,298 * (year of hire)) + (\$33,438 * (degree indicator)) - (\$3,120 * (degree year))

Standard error = \$12,914

Sources: Payroll/Personnel System Extract as of 10/31/2005, Academic Personnel, Pay Equity Study

University of California, Irvine
 Ladder Rank Faculty Salary Residuals--Revised Model
The Henry Samueli School of Engineering: Women and Minorities
 October 2004



Residual = actual salary - predicted salary

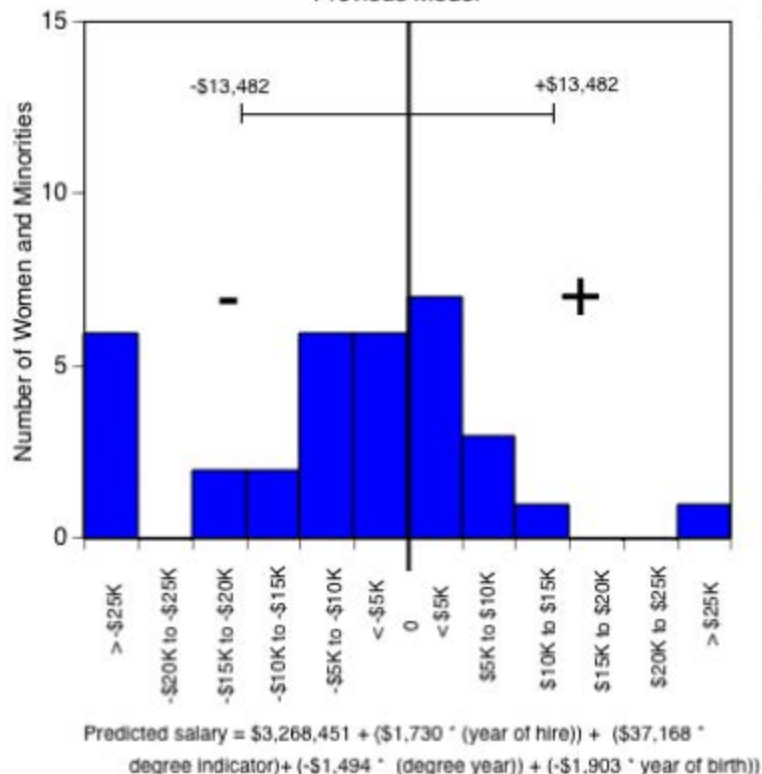
Predicted salary = $\$3,736,323 + (\$1,192 \cdot (\text{year of hire})) + [\$30,623 \cdot (\text{degree indicator}) + (-\$3,057 \cdot (\text{degree year}))]$

Standard error = \$13,927

Sources: Payroll/Personnel System Extract as of 10-31-2004, Academic Personnel, Pay Equity Study.

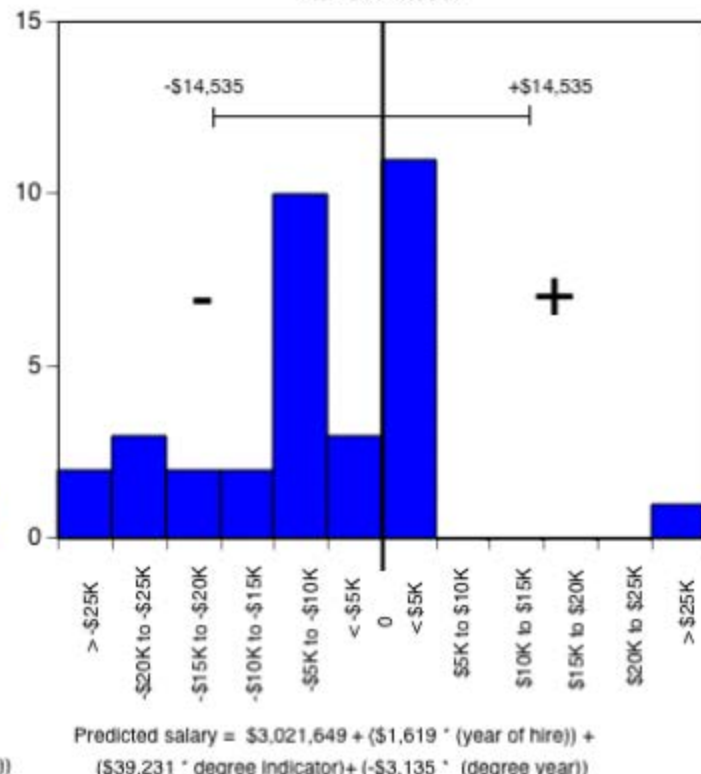
University of California, Irvine
 Ladder Rank Faculty Salary Residuals
School of Engineering: Women and Minorities
 October 2003

Previous Model



Standard error = \$13,482

Revised Model



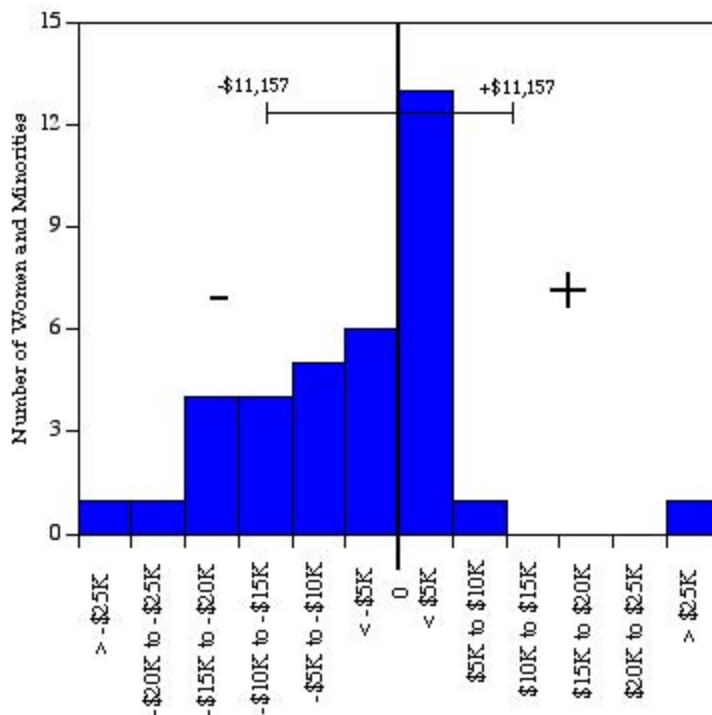
Standard error = \$14,535

Residual = actual salary - predicted salary

Sources: Payroll/Personnel System Extract as of 10-31-2003, Academic Personnel, Pay Equity Study.

The Henry Samueli School of Engineering: Women and Minorities

October 2002



Residual = actual salary - predicted salary

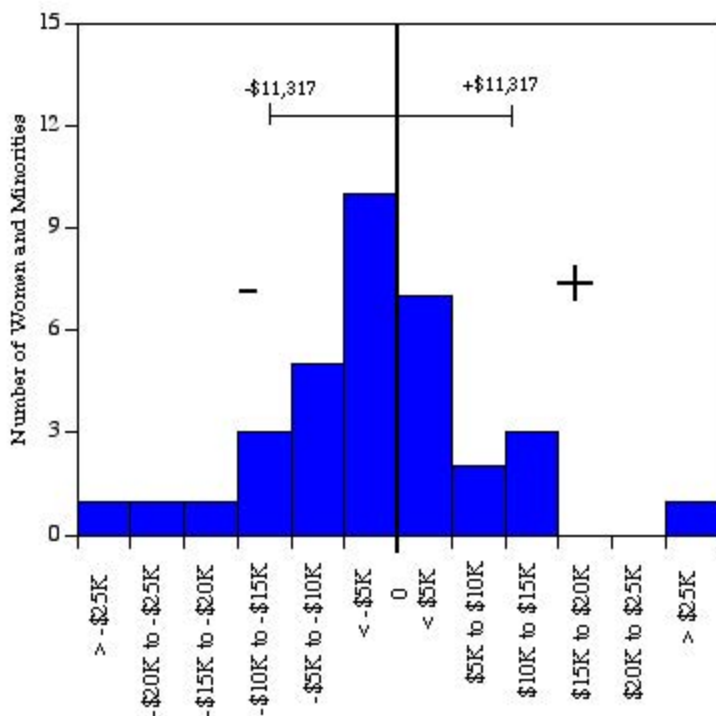
Predicted salary = $\$3,230,327 + (\$1,237 * (\text{year of hire})) + (\$28,689 * (\text{degree indicator})) + (-\$1,466 * (\text{degree year})) + (-\$1,403 * (\text{year of birth}))$

Standard error = \$11,157

Sources: Payroll/Personnel System Extract as of 10-31-2002, Academic Personnel, Pay Equity Study.

The Henry Samueli School of Engineering: Women and Minorities

October 2001



Residual = actual salary - predicted salary

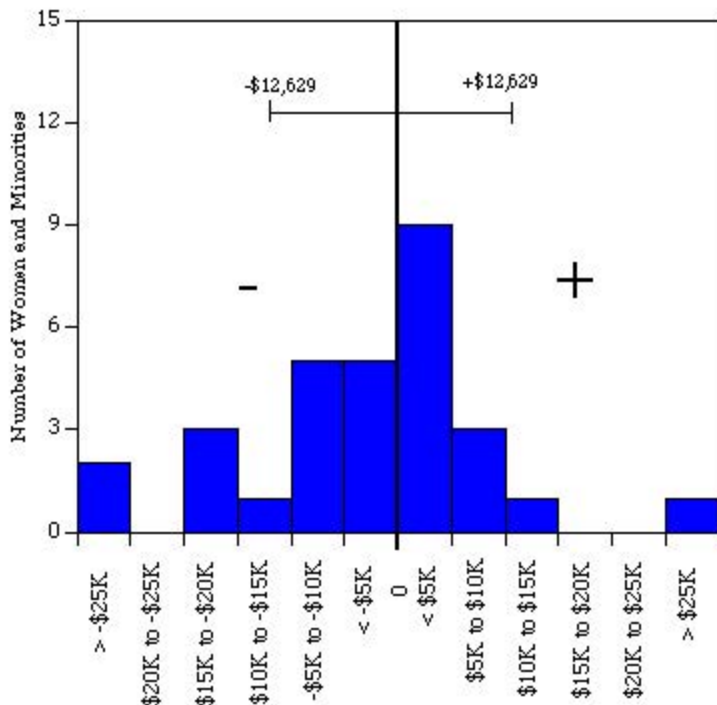
Predicted salary = $\$34.34 * 10^5 + (\$655 * (\text{year of hire})) + (-\$924 * (\text{degree year})) + (-\$1,456 * (\text{year of birth}))$
 $+ (\$18,386 * (\text{degree indicator}))$

Standard error = \$11,317

Sources: Payroll/Personnel System Extract as of 10-31-2001, Academic Personnel.

The Henry Samueli School of Engineering: Women and Minorities

October 2000



Residual = actual salary - predicted salary

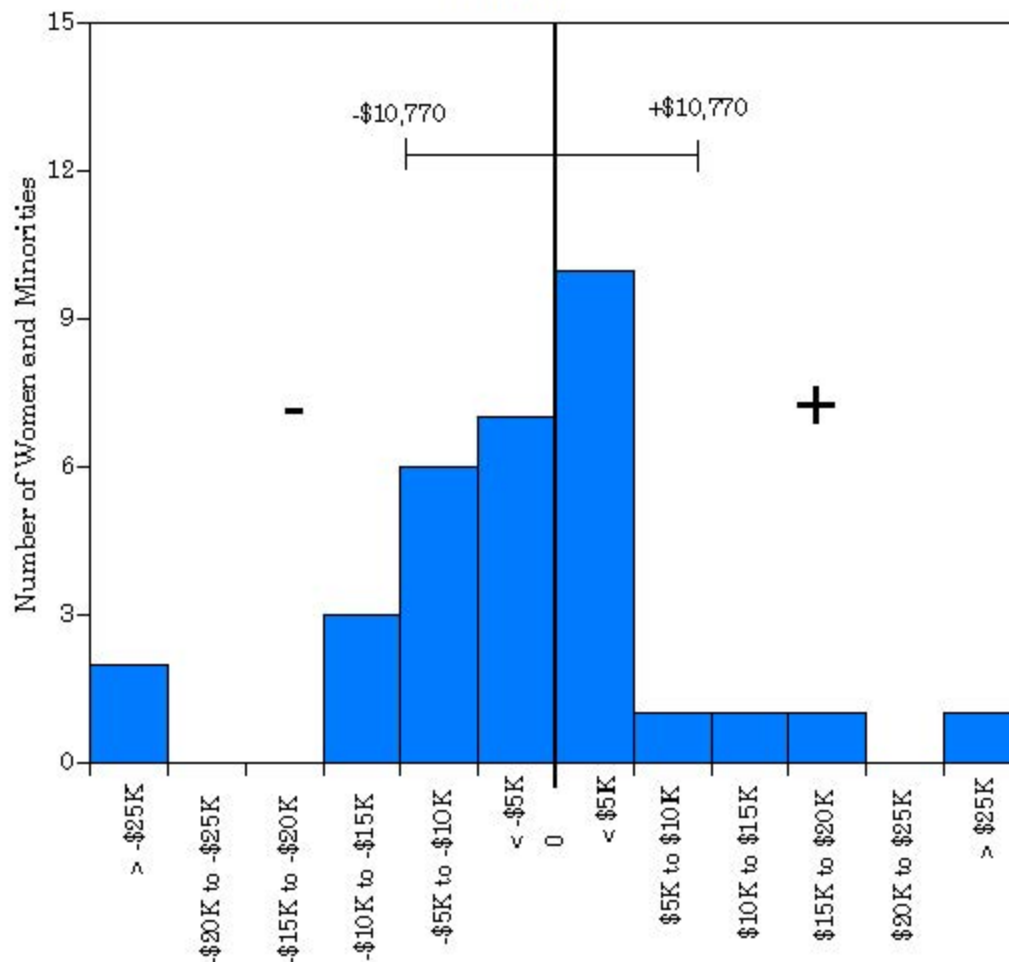
Predicted salary = $\$35.81 * 10^5 + (\$798 * (\text{year of hire})) + (-\$1,477 * (\text{degree year})) + (-\$1,098 * (\text{year of birth}))$

Standard error = \$12,629

University of California, Irvine
Ladder Rank Faculty Salary Residuals

The Henry Samueli School of Engineering: Women and Minorities

October 1999



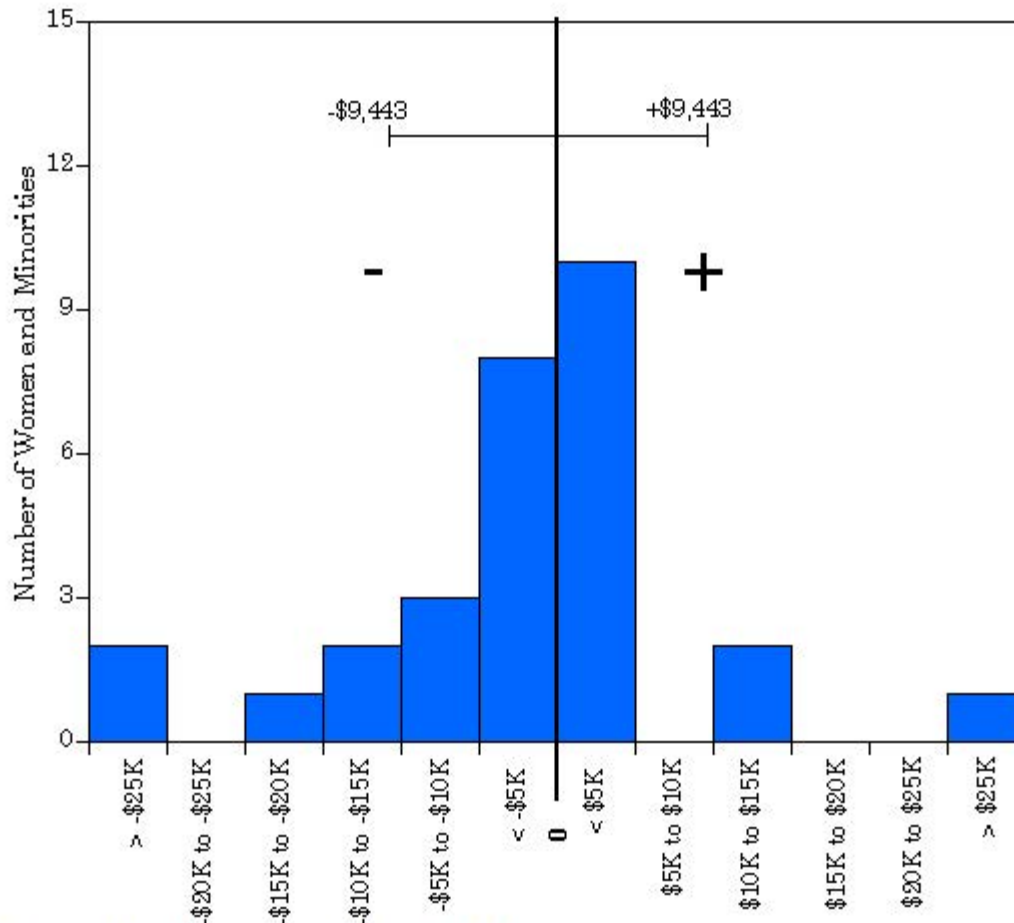
Residual = actual salary - predicted salary

Predicted salary = $\$203,257 + (\$578 * (\text{year of hire})) + (-\$1,446 * (\text{degree year})) + (-\$841 * (\text{year of birth}))$

Standard error = \$10,770

Sources: Payroll/Personnel System Extract as of 10-31-99, Academic Personnel.

University of California, Irvine
 Ladder Rank Faculty Salary Residuals
School of Engineering: Women and Minorities
 October 1998



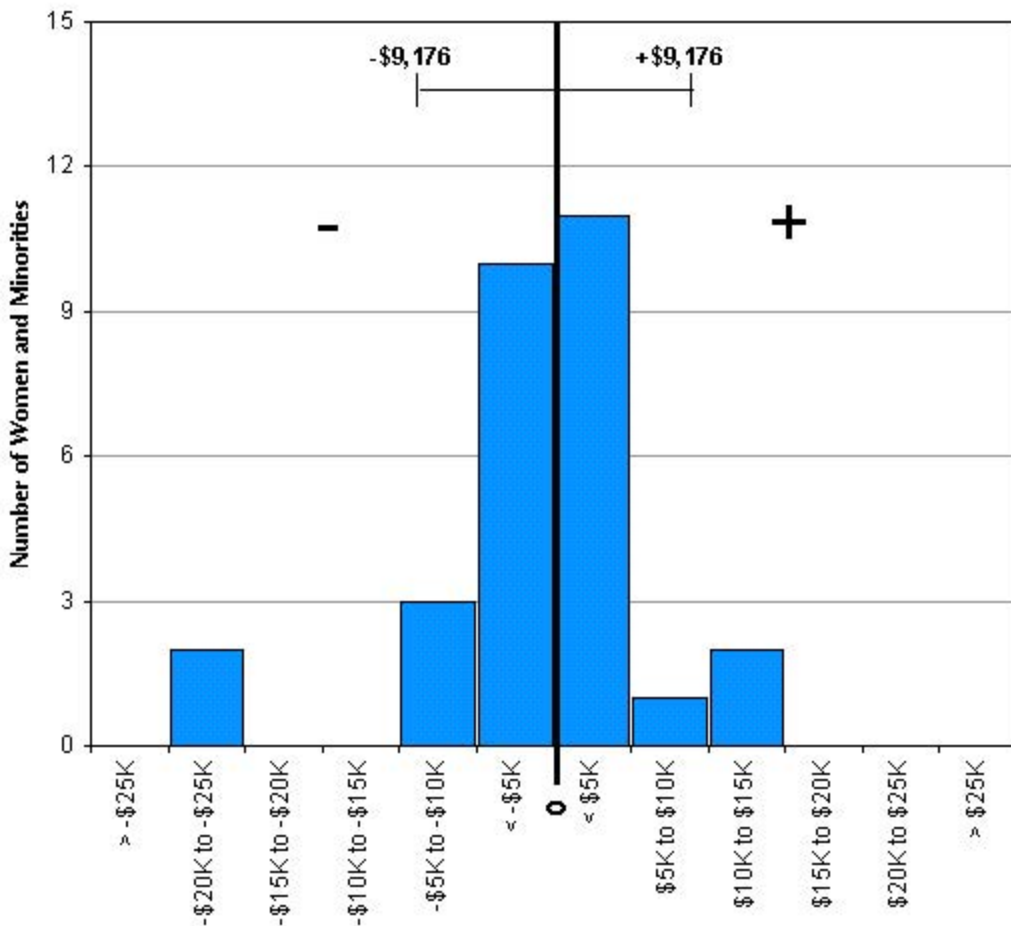
Residual = actual salary - predicted salary

Predicted salary = \$204,157 + (\$550 * (year of hire)) + (-\$1,553 * (degree year)) + (-\$710 * (year of birth))

Standard error = \$9,443.

Sources: Payroll/Personnel System Extract as of 10-31-98, Academic Personnel.

University of California, Irvine
 Ladder Rank Faculty Salary Residuals
School of Engineering: Women and Minorities
 October 1997



Residual = actual salary - predicted salary

Predicted salary = \$200,673 + (\$415 * (year of hire)) + (-\$1,772 * (degree year)) + (-\$266 * (year of birth))

Standard error = \$9,176.

Sources: Payroll/Personnel System Extract as of 10-31-97, Academic Personnel.